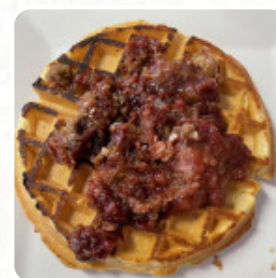




## Marsh View Cafe Menu

<https://menuweb.menu>

155 Bridge Rd, Salisbury, United States Of America  
+19784651199 - <http://nancysmarshview.com>



Here you will find the [menu](#) of **Marsh View Cafe** in Salisbury. At the moment, there are **22** meals and drinks on the menu. Nestled in Salisbury, MA, Nancy's Marshview Cafe Bakery is a beloved American eatery boasting an impressive 4.1-star rating. Open daily from 6:30 AM to 1:00 PM, this charming cafe is perfect for intimate gatherings or larger celebrations—just remember to call ahead at (978) 465-1199 to secure your table. Indulge in exquisite dishes while enjoying an excellent selection of teas. If you're exploring similar culinary experiences, be sure to check out Bucciarelli's Butcher Shop Deli and Mapow. Have you had the pleasure of dining here? We'd love to hear your thoughts!.

# Marsh View Cafe Menu



## Entrées

CRAB CAKE

## Sandwiches

BREAKFAST SANDWICH

## Side Dishes

BAKED POTATO

## Chicken

FRIED CHICKEN

## Sauces

HOLLANDAISE

## Potatoes

HASH BROWNS

## American Food

EGGS BENEDICT

## Hot Drinks

COFFEE

## Egg Dishes

OMELETTE

## Restaurant Category

VEGETARIAN

## Mexican Dishes

BREAKFAST BURRITO

BURRITO

## These Types Of Dishes Are Being Served

PANINI

WRAP

CHICKEN WRAP

CHICKEN

## Ingredients Used



AVOCADO

HONEY

CHEESE

CORNERD BEEF

EGG

# Marsh View Cafe

155 Bridge Rd, Salisbury, United  
States Of America

### Opening Hours:

Tuesday 06:00-14:00  
Wednesday 06:00-14:00  
Thursday 06:00-14:00  
Friday 06:00-14:00  
Saturday 06:00-14:00  
Sunday 06:00-14:00

Made with [Menu](#)

