



## The Jolly Roger Menu

<https://menuweb.menu>

716 Industrial Blvd Ellijay, GA 30540-3702, United States

+17062762090



The **menu of The Jolly Roger** from [Ellijay](#) includes 97 menus. On average the **menus or drinks on the menu** cost approximately \$11.1. You can view the categories on the menu below. Nestled in the scenic Blue Ridge, this seafood restaurant has garnered attention for its remarkably fresh offerings, with many praising the quality of dishes like the captain's platter. While the food shines, the space is intimate, best suited for small gatherings, and with limited seating, patience may be required. Some patrons have noted issues with service responsiveness and a disappointing political display, which detracted from their experience. However, the overall acclaim for the [seafood](#) quality and flavor suggests that this culinary destination is worth a visit, promising a delightful meal amid stunning mountain scenery.

# The Jolly Roger Menu



## Nigiri

SNAPPER

## Sushi Rolls

SUSHI

## Mains

COD

\$18.0

## Sandwiches

MAHI-MAHI

## Salad

COLE SLAW

\$2.0

## Starters & Salads

FRENCH FRIES

## Chicken

GRILLED CHICKEN

\$15.0

## Fish

SEA BASS

## Chicken Dishes

CHICKEN TENDERS

\$15.0

## Beef Dishes

FILET MIGNON

## Dessert

KEY LIME PIE

## Indian

FRIED OKRA

\$2.0

## Special Rolls

LOBSTER ROLL

## Sushi - Bento

COMBO

\$14.0

## Chicken Wings

WINGS

## American Food

CORN ON THE COB

\$1.8

## Hühnerfleisch Mit Reis

OYSTER

\$11.0

## Seafood Dishes

FRIED CALAMARI

\$8.2

## Seafood Specialties

STUFFED SHRIMP

\$18.0

## Salad Additions

OYSTERS (FRIED)

\$13.0

## Other Beverages

SWEET OR UNSWEET TEA

\$2.0

## Starches

RICE PILAF

\$2.0

# The Jolly Roger Menu



## Fish And Seafood Dishes

CATFISH \$10.0

## Fish Entrees

FLOUNDER \$9.0

## Simply Grilled

GROUPE

## Fried Seafood Dinners

CLAM STRIPS (FRIED) \$15.0

## Salads - Add-Ons

SALMON (GRILLED OR BLACKENED) \$18.0

## Sandwiches And Platters

CLAM STRIPS \$17.0

## Mexican-American Food

EMPANADAS

## Ala Cart Sides

HUSH PUPPIES (6) \$1.0

## Hamachi

AMBERJACK

## Protein - Cooked

CRAWFISH TAILS \$9.0

## Smoked Fish & Roe

SMOKED TROUT FILET \$11.0

## Usa Seafood Specials

COCONUT SHRIMP (FRIED) \$14.0

## Restaurant Category

FRENCH \$2.0

## Dinner \$46.99

RIBEYE

## Side Dishes

HUSH PUPPIES

CORN ON THE COBB \$2.0

## Main

FRIED COCONUT SHRIMP \$9.0

OYSTERS ON THE 1/2 SHELL

## Appetizers

COCONUT SHRIMP

BOILED SHRIMP (1/2 LB.) \$10.5

## Hot Drinks

TEA

COFFEE

## Plates

TUNA (GRILLED OR BLACKENED ONLY) \$13.0

SALMON (GRILLED OR BLACKENED ONLY) \$17.0

## Fried, Grilled Or Blackened

BAY (FRIED ONLY) \$18.0

# The Jolly Roger Menu



TUNA (GRILLED OR BLACKENED) \$18.0

## Salads



SALAD  
COLESLAW  
GARDEN \$4.0

## Starters

BACON WRAPPED SHRIMP \$11.0  
FROG LEGS \$17.0  
SEA SCALLOPS \$20.0

## Seafood

CALAMARI  
SHRIMP TEMPURA  
SHRIMP SCAMPI \$18.0  
SWORDFISH

## Appetizer

POPCORN SHRIMP  
TEMPURA  
SEAFOOD PLATTER  
SMOKED TROUT

## Beverages

COCA-COLA PRODUCTS \$2.0  
WINE OR BEER SETUP FEE \$3.5  
COKE PRODUCTS \$2.3  
COFFEE OR HOT TEA \$2.3

## Seafood Entrees

FRIED CLAM STRIPS \$11.0  
CAPTAIN'S PLATTER \$20.0

POPCORN SHRIMP (FRIED) \$10.0  
TROUT \$17.0

## Entrées

ONION RINGS  
FRIED SHRIMP  
BOILED SHRIMP \$9.0  
SMOKED FISH DIP \$9.0  
STEAMED CLAMS \$8.0  
OYSTERS ROCK  
SNOW CRAB LEGS \$19.0

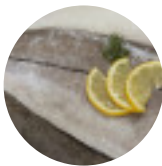
## These Types Of Dishes Are Being Served



FISH  
SANDWICH  
TUNA STEAK

LOBSTER  
OYSTERS  
PANINI  
MEAT  
MUSSELS  
CHICKEN \$9.0

## Ingredients Used



HADDOCK  
SEAFOOD  
ONION

TUNA  
SHRIMP  
SCALLOPS  
JUMBO SHRIMP  
HALIBUT

# The Jolly Roger Menu



BEEF	SHRIMP	\$11.0
SHRIMPS	TILAPIA	\$10.0
COCONUT	VEGETABLES	\$2.0
PRAWNS	SOFT SHELL CRAB	\$19.0
SALMON		

## The Jolly Roger

716 Industrial Blvd Ellijay, GA  
30540-3702, United States

**Opening Hours:**  
Monday 15:30 - 22:00  
Tuesday 15:30 - 22:00  
Wednesday 15:30 - 22:00  
Thursday 15:30 - 22:00  
Friday 15:30 - 22:00  
Saturday 09:00 - 22:00  
Sunday 09:00 - 22:00

Made with [Menu](#)

