

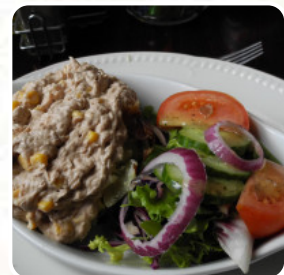


The Sugar Loaves Menu

<https://menuweb.menu>

56 Eyhorne Steet, Maidstone, United Kingdom

+441622880220 - <http://www.sugarloaveshollingbourne.com>



A **comprehensive [menu](#) of The Sugar Loaves** from Maidstone featuring all **46** dishes and drinks can be found here on the menu. Gary Kim welcomes you to Sugar Loaves, located in the charming Kentish village of Hollingbourne. Situated just 5 minutes away from the local village railway station and within walking distance of historic Leeds Castle, which is just over half a mile away. We offer a Fish and Chips take-away service daily, and don't forget to check out our specialty food nights (details available on our website). If you're seeking a genuine Kentish Village Pub serving traditional Ales and Wines, complete with a cozy open fire, then pay us a visit. A welcoming family atmosphere awaits you.

Eat A Ton Cafe Menu



Main Courses

NACHOS

Seafood

SHRIMP SALAD

Drinks

STRAWBERRY LEMONADE

Chicken Wings

WINGS

Toppings

TOPPINGS

Beverages

SWEET TEA

Restaurant Category

VEGETARIAN

Starters & Salads

POTATO CHIPS

FRENCH FRIES

Hot Drinks

TEA

COFFEE

Salads

HOUSE SALAD

CHICKEN SALAD

TUNA SALAD

SEAFOOD SALAD

Sandwiches

B.L.T.

CHICKEN SALAD SANDWICH

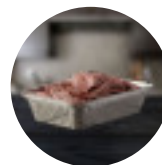
CLUB SANDWICH

B.L.T

TUNA SALAD SANDWICH

BLT

These Types Of Dishes Are Being Served



ROAST BEEF

PANINI

TURKEY

SALAD

SOUP

BREAD

TUNA STEAK

CHICKEN

SANDWICH

MEAT

TOSTADAS

FISH

Ingredients Used



BACON

BROCCOLI

LETTUCE

BEEF

TOMATO

TUNA

Eat A Ton Cafe Menu



- PICKLE

SHRIMP

SEAFOOD

VEGETABLES
- CHEDDAR CHEESE

CHEDDAR

CHEESE

Eat A Ton Cafe

102 N Jefferson Ave, Eatonton,
USA, United States

Opening Hours:
Tuesday 10:00-14:00 17:00-21:00
Wednesday 10:00-14:00 17:00-21:00
Thursday 10:00-14:00 17:00-21:00
Friday 10:00-14:00 17:00-21:00
Saturday 11:00-15:00

Made with [Menu](#)

