

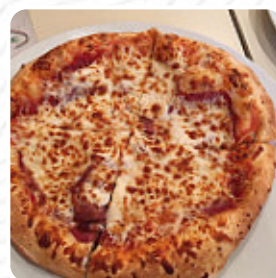
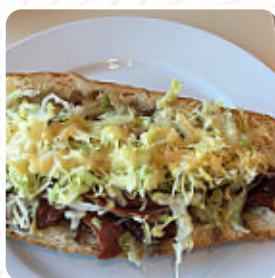


Calzone Menu

<https://menuweb.menu>

3717 Saint-Charles Blvd, Kirkland, Quebec H9H 4M2, Canada

+15144269000 - <http://www.calzone.ca>



A **comprehensive [menu](https://menuweb.menu) of Calzone** from Kirkland featuring all **47** dishes and drinks can be found here on the menu. Calzone restaurant receives mixed reviews, with some customers criticizing the prices, service, and quality of their food. Complaints include missing items, cold [pizza](#), and changes in taste and toppings. However, loyal patrons praise the restaurant's authentic Mom and Pop ambiance, delicious pizzas, and excellent service. The establishment boasts an impressive wall of pictures featuring famous patrons. Despite longer delivery times, customers love the soft and chewy crust, browned cheese, and Montreal-style [pizza](#) offerings. Overall, while some have had negative experiences, many customers find Calzone's pizza worth the wait and recommend trying it out.

Calzone Menu

Entrées

TOMATO CREAM SOUP

Main Courses

LASAGNA

Sandwiches

CHICKEN PESTO

Meat Dishes

MEATBALLS

Starters & Salads

FRENCH FRIES

Fish

SEA BASS

Calzone

CALZONE

Toppings

TOPPINGS

Cocktail

MARGARITA

French

POUTINE

Mexican-American Food

EMPANADAS

Sauces

SAUCE

Sauces

MUSHROOM SAUCE

TOMATO SAUCE

Salads

GREEK SALAD

SIDE SALAD

SIDE SALAD

Restaurant Category

MEXICAN

ITALIAN

VEGETARIAN

GREEK

Pizza



VEGETARIAN PIZZA

CHICKEN PIZZA

SPECIAL PIZZA

PIZZA MARGHERITA

MEXICAN PIZZA

PIZZA CALZONE

WESTERN PIZZA

ITALIAN PIZZA

Ingredients Used



PESTO

TOMATO

BEEF

PORK MEAT



Calzone Menu

TORTELLINI

ONION

BACON

MUSHROOMS

CHEESE

These Types Of Dishes
Are Being Served

PIZZA



PASTA

PANINI

SALAD

TOSTADAS

TUNA STEAK

CHICKEN

BREAD

MEAT

Calzone

3717 Saint-Charles Blvd,
Kirkland, Quebec H9H 4M2,
Canada

Opening Hours:

Monday 11:00 -23:00
Tuesday 11:00 -23:00
Wednesday 11:00 -23:00
Thursday 11:00 -23:00
Friday 11:00 -23:00
Saturday 11:00 -23:00
Sunday 11:00 -21:00

Made with [Menu](#)

