



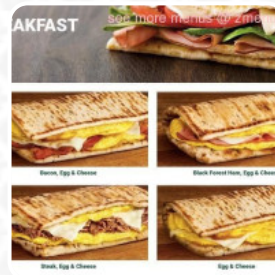
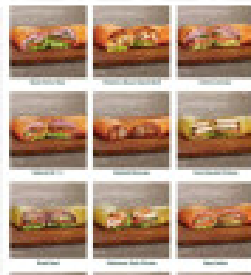
## Subway Menu

<https://menuweb.menu>

8153 John Mosby Hwy, Boyce, USA, United States

+15408379082 - [https://subway.com?](https://subway.com?utm_source=yelp&utm_medium=display&utm_term=order&utm_content=yelp-partnership-gm&utm_campaign=fwh-core-menu-cross-window-2020&cid=0:im:0:subway-com:dsp:nat-us-v1&segment_code=0)

[utm\\_source=yelp&utm\\_medium=display&utm\\_term=order&utm\\_content=yelp-partnership-gm&utm\\_campaign=fwh-core-menu-cross-window-2020&cid=0:im:0:subway-com:dsp:nat-us-v1&segment\\_code=0](https://subway.com?utm_source=yelp&utm_medium=display&utm_term=order&utm_content=yelp-partnership-gm&utm_campaign=fwh-core-menu-cross-window-2020&cid=0:im:0:subway-com:dsp:nat-us-v1&segment_code=0)



The restaurant from [Boyce](#) offers **48** different **menus and drinks on the menu** at an average price of \$8.9. At this restaurant, experiences seem to vary significantly. While some patrons delight in quick service and tasty subs at affordable prices, others report concerning issues. Confusion during order taking and lack of proper training among staff have left some diners frustrated, as simple requests often led to misunderstandings. Additionally, there are complaints regarding health safety practices, with employees not wearing masks despite industry standards. Long wait times have also marred the experience for some, leading to calls for management intervention. Overall, while the potential for a great meal exists, inconsistency in service and adherence to health protocols raises concerns.

# Subway Menu



## Main Courses

ROAST BEEF \$10.0

## Meat Dishes

MEATBALLS

## Wraps

EGG CHEESE WRAP \$13.0

## Starters & Salads

POTATO CHIPS \$2.5

## Dessert

RASPBERRY CHEESECAKE \$1.3

## Biscuits

WHITE CHIP MACADAMIA NUT \$1.3

## Turkey

OVEN-ROASTED TURKEY \$10.0

## Hot Drinks

COFFEE

## Vegetarian Mains

VEGGIE DELITE FOR KIDS \$10.0

## Popular Items

11 SUBWAY CLUB \$11.0

## Subway® Series

12 TURKEY CALI CLUB \$12.0

## Deli Heroes

GARLIC ROAST BEEF \$17.5

## Kids Menu

OVEN-ROASTED TURKEY FOR KIDS \$10.0

BLACK FOREST HAM FOR KIDS \$10.0

## Italian

18 THE ULTIMATE B.M.T \$11.0

MEATBALL MARINARA \$9.0

## Beverages

FOUNTAIN SOFT DRINK \$1.6

1% MILK \$1.8

MINUTE MAID JUICE \$1.8

## Breakfast



STEAK, EGG CHEESE WRAP \$13.0

BLACK FOREST HAM, EGG CHEESE WRAP \$13.0

BACON, EGG CHEESE WRAP \$13.0

OATMEAL RAISIN \$1.3

## These Types Of Dishes Are Being Served



PANINI

MEAT

TURKEY

OVEN ROASTED TURKEY \$13.0

## Chicken

ROTISSERIE CHICKEN \$10.0

# Subway Menu



SWEET ONION CHICKEN TERIYAKI	\$10.0
GRILLED CHICKEN	\$10.0
BUFFALO CHICKEN	\$10.0
20 ELITE CHICKEN BACON RANCH	\$12.0

## Sandwiches

EGG CHEESE	\$8.5
B.L.T.	\$10.0
BLACK FOREST HAM, EGG CHEESE	\$9.0
ITALIAN B.M.T.	\$10.0
BACON, EGG CHEESE	\$9.0
VEGGIE DELITE	\$8.0

STEAK CHEESE	\$10.0
--------------	--------

## Ingredients Used



TUNA	\$10.0
OVEN-ROASTED TURKEY HAM	\$10.0
CHOCOLATE CHIP	\$1.3
BLACK FOREST HAM	\$10.0
OVEN ROASTED TURKEY HAM	\$13.0
HAM	
PORK MEAT	
BACON	
GARLIC	

# Subway

8153 John Mosby Hwy, Boyce,  
USA, United States

**Opening Hours:**  
Monday 07:00-16:00  
Tuesday 07:00-20:00  
Wednesday 07:00-20:00  
Thursday 07:00-20:00  
Friday 07:00-20:00  
Saturday 07:00-20:00  
Sunday 07:00-20:00

Made with [Menu](#)

