

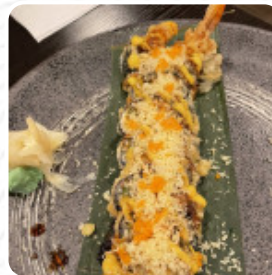


## Mido Sushi Bistro Menu

<https://menuweb.menu>

783 W Thames St, Norwich, United States

+18608921818 - <http://www.midosushinorwich.com/>



Here you will find the [menu](#) of **Mido Sushi Bistro** in Norwich. At the moment, there are **36** dishes and drinks on the menu. Mido [Sushi](#) Bistro Bar in Norwich, CT, is a highly-rated Japanese restaurant, boasting an impressive average rating of 4.2 stars. Patrons rave about the delicious offerings and the inviting atmosphere. Open daily from 11:30 AM to 10:00 PM, Mido Sushi Bistro Bar is the perfect spot to satisfy your sushi cravings. Don't hesitate to call (860) 892-1818 for reservations or to check on wait times. The menu features vegetarian options and a variety of small plates that are sure to delight. If you're intrigued by the menu but want to explore similar culinary experiences, consider visiting Joys Country Skillet or Great Oak Pizza. We'd love to hear about your favorite dish at Mido Sushi Bistro Bar!.

# Mido Sushi Bistro Menu



## Non Alcoholic Drinks

WATER

## Seafood

SHRIMP TEMPURA

## Side Dishes

RICE

## Sushi

CALIFORNIA ROLL

## Dessert

FRIED ICE CREAM

## Spirits

MARTINI

## Signature Rolls

VOLCANO ROLL

## Sichuan Dishes

ORANGE CHICKEN

## Japanese Specialties

VEGETABLE TEMPURA

## Noodle

RAMEN

## Asian

GYOZA

## Sushi Rolls

SPIDER ROLL

SUSHI

## Appetizer

CRAB RANGOON

TEMPURA

## Chinese Dishes

CHICKEN LO MEIN

LO MEIN

## Restaurant Category

GLUTEN FREE

DESSERT

## These Types Of Dishes Are Being Served

NOODLES

SOUP

CHICKEN

MEAT

SALAD

ICE CREAM

DESSERTS

## Ingredients Used



SHRIMP

GINGER

TUNA

EEL

AHI TUNA

# Mido Sushi Bistro Menu



VEGETABLES

PORK MEAT

DUCK

MISO

LYCHEE

---

## Mido Sushi Bistro

783 W Thames St, Norwich,  
United States

**Opening Hours:**  
Sunday 12:00-21:30

Made with [Menu](#)

