

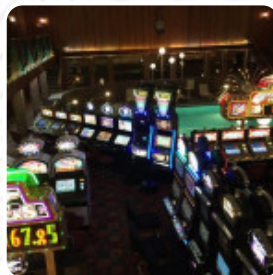


Evah's Menu

<https://menuweb.menu>

Great Basin Blvd, Ely, NV, 89301, United States

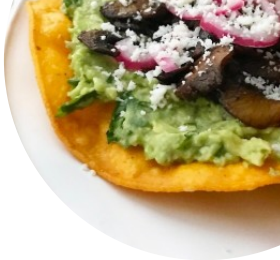
+17752894271 - <http://ramada.com/>



A complete [menu](#) of Evah's from Ely featuring all 41 dishes and drinks can be found here on the menu.

Located inside the Ramada hotel in Ely, this eatery offers a mix of Italian and American dishes, recently rebranded as Smash Burger with a new menu focus. While service is friendly and accommodating, it can be slow during busy times. Portions tend to be generous but prices are on the higher side. Some dishes like chicken parmesan salad and homemade soups receive praise, while others such as chicken strips disappoint. The atmosphere, especially upstairs overlooking hotel amenities, is pleasant. Overall, it's a convenient, if somewhat pricey, option in a remote area with a welcoming staff and a changing menu.

Benton's Sugar Shack Menu



Bagels

CINNAMON RAISIN \$9.1

Pizza

WESTERN \$10.3

Snacks

EGG FRENCH TOAST

Toast

FRENCH TOAST

Starters & Salads

FRENCH FRIES

Sauces

SALSA \$1.1

Ice Cream Cup

VERY BERRY \$10.3

Fries

HOME FRIES

Postres

COCONUT BANANA CREAM PIE

Cakes

CLASSIC BUTTERMILK \$8.0

Pancakes

BUTTERMILK PANCAKE (PLAIN)

Protein Shakes

PEACHES CREAM

Shakes

SHAKE

Milkshakes

MILKSHAKE

Brunch

STEAK AND EGGS

Hot Drinks

COFFEE

Milk Shakes

MILK SHAKE

Hot Beverages

HOT CHOCOLATE WITH WHIPPED CREAM

Egg Specials

COUNTRY BENEDICT \$9.1

French Toast

FRENCH TOAST SAMPLER \$9.1

Stack Dish

EGG PANCAKE

Our Specials

BIG JIM \$10.3

Benton's Sugar Shack Menu



Sandwich Menu

GRILLED HAM, EGG CHEESE

Entree Add-Ons

SAUTÉED SWEET ONIONS \$0.6

Hot Drink

HOT CHOCOLATE

Classics & Combos

THE BASIC \$10.3

Design Your Own

DESIGN YOUR OWN PANCAKE \$10.3

Marie's Famous Fruit Pies By The Slice

RAZZLEBERRY \$9.1

Food Add-Ons

ADD JALAPENOS \$0.6

Biscuit Creations

BISCUIT SAUSAGE GRAVY

Omelette Shoppe

THREE CHEESE

Flapjacks

WILD MAINE BLUEBERRY \$9.1

Desserts

SUGAR MAKER \$10.3

Pancake Bar

3 BLUEBERRY BUTTERMILK
PANCAKES \$6.9

Breakfast - Platters

HASH PLATTER \$9.1

Sweet Cream Sensations

RED WHITE BLUE

Complete Breakfast

CORNED BEEF HASH \$3.4

Restaurant Category

FRENCH

Muffin - Vegan

BANANA WALNUT \$9.1

Christos Signature Pizzas

GRILLED CHEESE TOMATO

Shack Combos

SAUSAGE SCRAMBLER & FRENCH
TOAST \$9.1

Uncategorized

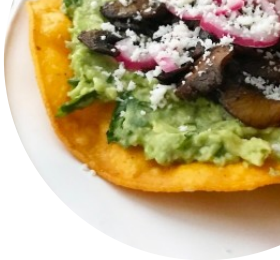
SAUSAGE & CHEDDAR \$10.3

Burger

SHACK STACK \$9.1

BACON LOVERS

Benton's Sugar Shack Menu



Side Dishes

BAKED BEANS	
SEASONED FRIES	\$2.3

A La Carte

SINGLE EGG	\$1.7
HOMEMADE BUTTERMILK BISCUIT	\$2.3

Subs

VEGGIE	\$10.3
HAM SWISS	

Breakfast Sandwiches

GRILLED BACON, EGG & AMERICAN CHEESE	\$8.0
GRILLED SAUSAGE, EGG & CHEESE	\$8.0

Extras

ADD SAUTÉED ONIONS TO YOUR HOMEFRIES
ADD FLAVOR TO YOUR PANCAKE
SHACK FAVORITES

Sandwiches

AMERICAN GRILLED CHEESE	\$6.9
GRILLED EGG SANDWICH	\$7.8
STEAK CHEESE	

Breakfast



BUTTERMILK PANCAKES	
SCRAMBLED EGGS	
STUFFED OMELETTE	\$10.3

Omelettes

MUSHROOM CHEDDAR SCRAMBLER	\$10.3
GRILLED CORNED BEEF HASH & CHEDDAR	\$10.3
ULTIMATE LOADED HOMEFRIES	\$10.3
FARMERS OMELETTE	

These Types Of Dishes Are Being Served

TOSTADAS
BREAD
MEAT
APPETIZER

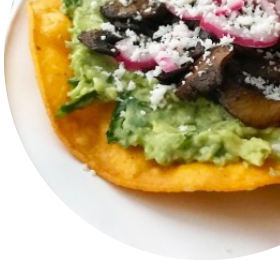
Benton's Family History

BUTTERMILK PANCAKE, FLAVORED	\$3.4
3 VERY BERRY BUTTERMILK PANCAKES	\$8.0
2 WEDGES CLASSIC FRENCH TOAST	\$2.9
1 WEDGE BANANA BREAD FRENCH TOAST	\$2.9
ADDITIONAL PITCHER OF MAPLE SYRUP	\$6.6

Pancake & French Toast

CLASSIC (WHITE OR WHEAT BREAD)	\$8.0
APPLE CINNAMON DRIZZLE	\$9.1
TOASTED WALNUT (WHITE OR WHEAT BREAD)	\$9.1
RASPBERRY OR STRAWBERRY STUFFED	\$9.1
GRANDMA'S APPLE CINNAMON	\$9.1

Benton's Sugar Shack Menu



CRANBERRY-APPLE CINNAMON \$9.1

Dessert



CREPES
PANCAKE
MUFFINS

COOKIES

CINNAMON ROLL

BANANA BREAD

STRAWBERRY SHORTCAKE \$9.1

On The Side

SMALL HICKORY SMOKED HAM STEAK \$3.4

LARGE HICKORY SMOKED HAM STEAK \$5.2

BACON OR SAUSAGE (3 SLICES OR 3 LINKS) \$3.2

PA'S MAPLE COOKED KIELBASA \$3.4

MA'S MAPLE BAKED BEANS \$4.0

CAMP FRIES (HOME FRIES WITH DICED ONIONS) \$2.9

TOAST (WHITE, WHEAT OR CINNAMON RAISIN) \$2.3

Beverages



COFFEE (HOT OR ICED CUP REGULAR) \$2.1

TEA (BOTTOMLESS CUP) \$2.3

SMALL MILK (100% WHOLE) \$2.0

LARGE MILK (100% WHOLE) \$2.6

SMALL CHOCOLATE MILK \$2.0

LARGE CHOCOLATE MILK \$2.6

GRANDPA'S MAPLE MILK SHAKE \$2.9

COCA-COLA, DIET COCA-COLA OR MOUNTAIN DEW \$2.0

SMALL JUICE (10 OZ. CUP) - ORANGE, APPLE, CRANBERRY, OR V8 \$2.0

LARGE JUICE (16 OZ. CUP) \$2.9

Ingredients Used



SYRUP
POTATOES
SAUSAGE

MILK

HAM

BEANS

BACON

ONION

COCONUT

CHEESE

EGG

CHEDDAR

CHEDDAR CHEESE

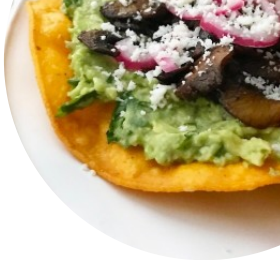
CHOCOLATE

BISCUIT

RASPBERRY

BANANA

Benton's Sugar Shack Menu



JALAPENOS

\$1.1

Benton's Sugar Shack

2010 Rt 175, Thornton, NH,
03285, United States

Opening Hours:
Thursday 07:00-12:00
Friday 07:00-12:00
Saturday 07:00-14:00
Sunday 07:00-14:00

Made with [Menu](#)

