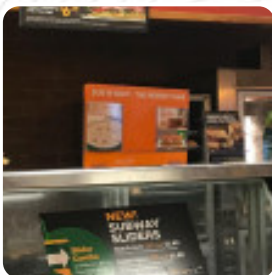


Subway Menu

<https://menuweb.menu>

416 14th St, West Point I-23181, United States
+18048432782 - <https://subway.com>



The **menu of Subway** from West Point includes **54** courses. On average the *courses or drinks* on [the menu](#) cost approximately \$8.9. You can view the categories on the menu below.

Subway Menu



Main Courses

ROAST BEEF \$10.0

Wraps

EGG CHEESE WRAP \$13.0

Sauces

BBQ

Dessert

RASPBERRY CHEESECAKE \$1.3

Biscuits

WHITE CHIP MACADAMIA NUT \$1.3

Hot Drinks

COFFEE

Vegetarian Mains

VEGGIE DELITE FOR KIDS \$10.0

Popular Items

11 SUBWAY CLUB \$11.0

Subway® Series

12 TURKEY CALI CLUB \$12.0

Deli Heroes

GARLIC ROAST BEEF \$17.5

Restaurant Category

ITALIAN

Beverages, Chips, Cookies

CHIPS \$2.5

Kids Menu

OVEN-ROASTED TURKEY FOR KIDS \$10.0

BLACK FOREST HAM FOR KIDS \$10.0

Italian

MEATBALL MARINARA \$9.0

18 THE ULTIMATE B.M.T \$11.0

Beverages

MINUTE MAID JUICE \$1.8

1% MILK \$1.8

FOUNTAIN SOFT DRINK \$1.6

Breakfast

BACON, EGG CHEESE WRAP \$13.0

BLACK FOREST HAM, EGG CHEESE WRAP \$13.0

STEAK, EGG CHEESE WRAP \$13.0

OATMEAL RAISIN \$1.3

Chicken

20 ELITE CHICKEN BACON RANCH \$12.0

SWEET ONION CHICKEN TERIYAKI \$10.0

BUFFALO CHICKEN \$10.0

GRILLED CHICKEN \$10.0

ROTISSERIE CHICKEN \$10.0

Subway Menu



Ingredients Used

TUNA	
OVEN-ROASTED TURKEY HAM	\$10.0
BLACK FOREST HAM	\$10.0
CHOCOLATE CHIP	\$1.3
CHEESE	
OVEN ROASTED TURKEY HAM	\$13.0

EGG CHEESE \$8.5

These Types Of Dishes Are Being Served



PANINI	
TURKEY	
OVEN ROASTED TURKEY	\$13.0

- MEAT
- PIZZA
- SALAD
- FISH
- WRAP

Sandwiches



BACON, EGG CHEESE	\$9.0
ITALIAN B.M.T.	\$10.0
B.L.T.	\$10.0
STEAK CHEESE	\$10.0
VEGGIE DELITE	\$8.0
TUNA SANDWICH	
TURKEY SANDWICH	
BLACK FOREST HAM, EGG CHEESE	\$9.0

Subway Menu



Subway

416 14th St, West Point I-23181,
United States

Opening Hours:

Monday 08:30-22:00
Tuesday 08:30-22:00
Wednesday 08:30-22:00
Thursday 08:30-22:00
Friday 08:30-22:00
Saturday 08:30-22:00
Sunday 10:00-21:00

Made with [Menu](#)

