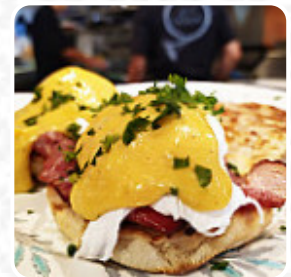
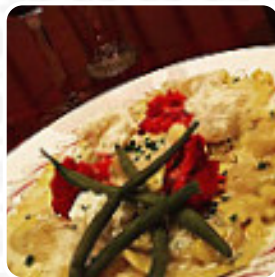




## Legs Diamond Menu

<https://menuweb.menu>

4573 Chateau Blvd | Glacier Lodge, Whistler, British Columbia V0N 1B4, Canada  
+16049025074, +16049050587 - <https://www.legsdiamondbistro.com/>



The restaurant from Whistler offers **87** different **dishes and drinks** on [the menu](#) at an average price of CA\$61.

Legs Diamond offers an exciting premium casual dining experience in uptown Whistler, combining European, Californian, and West Coast Canadian cuisine. Owner Gregory Pettit and his sons Callum and Sean invite you to join them and discover what makes this place special.

# Legs Diamond Menu



## Salads

CAESAR SALAD CA\$25

## Desserts

CHOCOLATE CAKE

## Non Alcoholic Drinks

WATER

## Alcoholic Drinks

CABERNET SAUVIGNON

## Entrées

SOUP DU JOUR

## Pasta

RAVIOLI

## Mains

BEEF WELLINGTON CA\$76

## Main Courses

BRAISED LAMB SHANK CA\$67

## Vegetarian

CAULIFLOWER

## Meat Dishes

MEATBALLS

## Side Dishes

SEASONAL VEGETABLES

## Drinks

BEER

## Lamb

LAMB SHANK

## Starters & Salads

FRENCH FRIES

## Sauces

GRAVY

## Steaks

STEAK FRITES

## Beer

DE-ALCOHOLIZED BEER CA\$10

## Wine

CHARDONNAY

## Sparkling Wines

HOWLING BLUFF (BTL) CA\$82

## Beers On Tap

RED TRUCK ALE CA\$10

## Local

WHISTLER CHESTNUT ALE CA\$10

## Seafood\*

PRAWNS

# Legs Diamond Menu



## ALKOHOLISCHE GETRÄNKE

CORONA CA\$10

## Mains - Dinner

WILD BC SOCKEYE SALMON CA\$61

## Condiments And Sauces

HUMMUS

## Menu Di Bambini

PASTA PILLOWS CA\$54

## Seafood

PRAWN

PANKO PRAWNS CA\$33

## Dessert

CHEESECAKE

CHEESE CAKE

## Restaurant Category



VEGETARIAN

BAR

DESSERT

## Beer & Cider

LOCALITY BLACK TEA LIGHT MALT LAGER CA\$15

WHISTLER BEAR PAW HONEY LAGER CA\$10

WHISTLER BREWING MOUNTAIN PILSNER CA\$10

PEMBERTON BEER FARMERS DRAFT HORSE PALE ALE CA\$15

PEMBERTON BEER FARMERS FARMERS DAUGHTER WHITE CA\$15

WHISTLER GRAPEFRUIT ALE CA\$10

## Most Ordered

CINNAMON-DUSTED DEEP FRIED CHEESECAKE CA\$18

CHOCOLATE TART WITH CHANTILLY CREAM CA\$14

ASIAN PEAR RAVEN'S MOON CIDER (500ML) CA\$18

COAST MOUNTAIN DAYDREAMER IPA CA\$15

APPLE RAVEN'S MOON CIDER (500ML) CA\$18

MEATBALL WITH HOUSE SALAD CA\$28

BAKED BANANA HAZELNUT SPREAD CA\$15

## White Wines

FORT BERENS (BTL) CA\$82

SIREN'S CALL (BTL) CA\$92

HOUSE WHITE (BTL) CA\$67

MARICHEL (BTL) CA\$80

OROFINO (BTL) CA\$101

FORT BERENS RESERVE (BTL) CA\$115

GIANT HEAD (BTL) CA\$92

KETTLE VALLEY (BTL) CA\$86

## Red Wines

SIRENS CALL (BTL) CA\$101

MCWATTERS (BTL) CA\$116

HUGGING TREE (BTL) CA\$92

HOUSE RED (BTL) CA\$69

# Legs Diamond Menu



PHANTOM CREEK (BTL)	CA\$207
OROFINO BELEZA (BTL)	CA\$128
KALALA ASPIRE (BTL)	CA\$97
FORBIDDEN FRUIT (BTL)	CA\$94
HOWLING BLUFF 3 MILE (BTL)	CA\$116
SIRENS CALL (1.5L MAGNUM)	CA\$244

## These Types Of Dishes Are Being Served



BURGER  
TUNA STEAK  
SALAD

APPETIZER  
PASTA  
LAMB  
MEAT  
BREAD

DESSERTS  
SOUP

## Ingredients Used



BEEF  
KING PRAWN  
VEGETABLES

ONION  
DUCK  
KALE  
ZUCCHINI  
PRAWNS  
PESTO  
TOMATOES  
CHEESE  
VEGETABLES  
CHOCOLATE

# Legs Diamond

4573 Chateau Blvd | Glacier  
Lodge, Whistler, British Columbia  
V0N 1B4, Canada

**Opening Hours:**  
Wednesday 9:00-22:00  
Thursday 17:00-22:00  
Friday 17:00-22:00  
Saturday 17:00-22:00  
Sunday 17:00-22:00

Made with [Menu](#)

