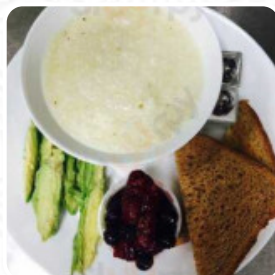




## More Than Java Cafe Menu

<https://menuweb.menu>

358 Main St, Laurel, Maryland, USA, 20707, United States  
+13014903200 - <http://morethanjavacafe.com/>



A comprehensive [menu](#) of More Than Java Cafe from [Laurel](#) featuring all 87 dishes and drinks can be found here on the menu.

# More Than Java Cafe Menu



## Non Alcoholic Drinks

APPLE JUICE

## Smoothies

SMOOTHIE

## Burger

VEGGIE BURGER

## Spirits

MARTINI

## American Food

MAC AND CHEESE

## Beverages

JUICES

## Bread

BAGEL

## French

CROISSANT

## Restaurant Category

VEGAN

## Salads

CHICKEN SALAD

HOUSE SALAD

## Side Dishes

GRITS

POTATO CHIPS

## Breakfast

SCRAMBLED EGGS

OATMEAL RAISIN

## Drinks

STRAWBERRY LEMONADE

SMOOTHIES

## Soft Drinks

LEMONADE

JUICE

## Mexican Dishes

BREAKFAST BURRITO

BURRITO

## Hot Drinks

COFFEE

TEA

## Sides

EXTRA CHEESE

SWEET POTATO

## Chicken

CHICKEN WAFFLES

PINEAPPLE CHICKEN

JERK CHICKEN

## Sauces

SALSA

# More Than Java Cafe Menu



MAYO

HOT SAUCE

## Indian



CHAI

CHICKEN CURRY

CURRY CHICKEN

## Sandwiches

B.L.T.

BREAKFAST SANDWICH

CHICKEN SANDWICH

CHEESE SANDWICH

## Coffee

CARAMEL FRAPPE

ESPRESSO

ICED COFFEE

ICED CARAMEL LATTE

CARAMEL LATTE

## Dessert

COOKIES

BANANA PUDDING

WAFFLE

CHEESECAKE

MUFFINS

COOKIE

## These Types Of Dishes Are Being Served

BURGER

PANINI



ICE CREAM

DESSERTS

SANDWICH

CHICKEN

WRAP

CHICKEN WRAP

SALAD

BREAD

TURKEY

## Ingredients Used



TOMATOES

KALE

LETTUCE

MUSTARD

SYRUP

CHEDDAR

HAM

TOMATO

CHOCOLATE CHIP

POTATOES

BUTTER

PEANUT BUTTER

GINGER

CHEESE

MILK

BISCUIT

CARAMEL

CHOCOLATE

BACON

EGG

COCONUT

OATMEAL

# More Than Java Cafe Menu



BANANA

SAUSAGE

MANGO

## More Than Java Cafe

358 Main St, Laurel, Maryland,  
USA, 20707, United States

### Opening Hours:

Wednesday 08:00-15:00  
Thursday 08:00-15:00  
Friday 08:00-15:00  
Saturday 08:00-15:00  
Sunday 10:00-14:00

Made with [Menu](#)



One of my favori  
cafés to visit  
whenever I am in  
town. The daily m  
options are alway  
point and hit the