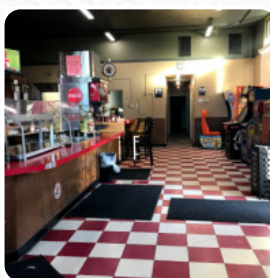
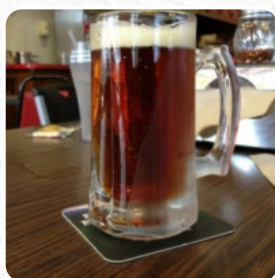




## Pizza Factory Menu

<https://menuweb.menu>

Commercial Street, Portola, 96122, United States Of America, PORTOLA  
+15308320430 - <http://www.pizzafactory.com/locations/portola>



The **menu of Pizza Factory** from [PORTOLA](#) includes 88 dishes. On average the **dishes or drinks on the menu** cost approximately \$12.7. You can view the categories on the menu below. Discover Pizza Factory in Portola, CA, a delightful Italian restaurant boasting an average rating of 3.5 stars. Join us today from 11:00 AM to 9:00 PM and savor a meal that caters to every palate, including delicious vegetarian options. To ensure you have a table waiting for you, we recommend calling ahead at (530) 832-0430. Don't forget to share your experience with us; your feedback matters! If you're in the mood for something different, consider exploring nearby dining options like Mountain [Pizza](#) and Subway. Don't miss out on a wonderful dining experience at Pizza Factory!.

# Pizza Factory Menu



## Non Alcoholic Drinks

BOTTLED WATER \$1.5

## Entrées

PIZZA BREAD \$3.3

## Side Dishes

BREADSTIX \$5.0

## Chicken

PINEAPPLE CHICKEN

## Chicken Dishes

BBQ CHICKEN \$7.0

## Dessert

COOKIE

## Wings

WINGS (24) \$17.5

## Favorites

CHEESY STIX \$5.8

## Baked

LASAGNA \$8.0

## Vegetarian Subs

ITALIAN SUB \$7.0

## Popular Items

WINGS (10) \$8.5

## Side Orders & Appetizers

GARLIC BREAD WITH CHEESE \$3.8

## Sữa Chua / Yogurt

COMBO LARGE \$11.0

## Fresh Sandwich Creations

DELI SANDWICHES \$6.5

## Combos Promocionais

INDIVIDUAL COMBO \$8.0

## Soup, Salad, And Chili

DINNER SALAD \$4.0

## Sandwiches

SPICY SIGNATURE SAUSAGE \$7.0

AWESOME SUB \$7.0

## Sauces

MARINARA

MARINARA SAUCE

## Calzones

VEGETARIAN INDIVIDUAL \$8.0

CUSTOM INDIVIDUAL \$8.0

## These Types Of Dishes Are Being Served

PIZZA

SALAD

# Pizza Factory Menu



## Salads

### SALAD

ANTIPASTO SALAD	\$7.0
CUSTOM LARGE	\$11.0

## Soup & Salads

CAESAR SALAD ADD CHICKEN	\$8.5
GREEK SALAD ADD CHICKEN	\$8.5
ALL-YOU-CAN-EAT SALAD	\$7.0

## Pasta



PASTA ALFREDO	
SPAGHETTI AND MEATBALLS	\$7.8
BAKED SPAGHETTI	\$6.8
FETTUCCINE ALFREDO WITH CHICKEN	\$9.0
RAVIOLI	\$8.0

## Ingredients Used

### TOMATOES

TOMATO

GARLIC

BACON

HAM

## Pizza



WESTERN BBQ CHICKEN MINI (8 4 SLICES)	\$8.8
GREEK LARGE (14 10 SLICES)	\$20.0
BBQ CHICKEN XL (16 12 SLICES)	\$22.5
WESTERN BBQ CHICKEN SMALL (10 6 SLICES)	\$13.5

WESTERN BBQ CHICKEN MED (12 8 SLICES)	\$17.3
---------------------------------------	--------

WESTERN BBQ CHICKEN LARGE (14 10 SLICES)	\$21.5
--	--------

WESTERN BBQ CHICKEN XL (16 12 SLICES)	\$24.8
---------------------------------------	--------

PESTO, SUNDRIED TOMATOES GARLIC MINI (8 4 SLICES)	\$7.8
---	-------

PESTO, SUNDRIED TOMATOES GARLIC SMALL (10 6 SLICES)	\$11.8
---	--------

PESTO, SUNDRIED TOMATOES GARLIC MED (12 8 SLICES)	\$16.0
---	--------

PESTO, SUNDRIED TOMATOES GARLIC LARGE (14 10 SLICES)	\$19.3
--	--------

PESTO, SUNDRIED TOMATOES GARLIC XL (16 12 SLICES)	\$22.0
---	--------

GREEK MINI (8 4 SLICES)	\$8.0
-------------------------	-------

GREEK SMALL (10 6 SLICES)	\$11.8
---------------------------	--------

GREEK MED (12 8 SLICES)	\$16.0
-------------------------	--------

ALL MEAT MINI (8 4 SLICES)	\$9.0
----------------------------	-------

GREEK XL (16 12 SLICES)	\$22.0
-------------------------	--------

VEGETARIAN LARGE	\$11.0
------------------	--------

### GARLIC PIZZA

FACTORY SPECIAL LARGE (14 10 SLICES)	\$22.3
--------------------------------------	--------

ALL MEAT SMALL (10 6 SLICES)	\$13.0
------------------------------	--------

ALL MEAT MED (12 8 SLICES)	\$17.0
----------------------------	--------

ALL MEAT LARGE (14 10 SLICES)	\$22.3
-------------------------------	--------

ALL MEAT XL (16 12 SLICES)	\$25.0
----------------------------	--------

FACTORY SPECIAL MINI (8 4 SLICES)	\$9.0
-----------------------------------	-------

FACTORY SPECIAL SMALL (10 6 SLICES)	\$13.0
-------------------------------------	--------

FACTORY SPECIAL MED (12 8 SLICES)	\$17.0
-----------------------------------	--------

BBQ CHICKEN LARGE (14 10 SLICES)	\$18.8
----------------------------------	--------

# Pizza Factory Menu



FACTORY SPECIAL XL (16 12 SLICES)	\$25.0	HAWAIIAN XL (16 12 SLICES)	\$21.0
VEGGIE MINI (8 4 SLICES)	\$8.0		
VEGGIE SMALL (10 6 SLICES)	\$12.0		
VEGGIE MED (12 8 SLICES)	\$16.0		
VEGGIE LARGE (14 10 SLICES)	\$20.0		
HAWAIIAN MINI (8 4 SLICES)	\$6.5		
BBQ CHICKEN MED (12 8 SLICES)	\$15.8		
BBQ CHICKEN SMALL (10 6 SLICES)	\$11.8		
BBQ CHICKEN MINI (8 4 SLICES)	\$7.5		
HEARTY ARTY XL (16 12 SLICES)	\$22.0		
HEARTY ARTY LARGE (14 10 SLICES)	\$20.0		
HEARTY ARTY MED (12 8 SLICES)	\$17.0		
HEARTY ARTY SMALL (10 6 SLICES)	\$13.0		
HEARTY ARTY MINI (8 4 SLICES)	\$8.0		
HAWAIIAN LARGE (14 10 SLICES)	\$17.6		
VEGGIE XL (16 12 SLICES)	\$22.0		
HAWAIIAN SMALL (10 6 SLICES)	\$10.0		
HAWAIIAN MED (12 8 SLICES)	\$13.2		

## Pizza Factory

Commercial Street, Portola,  
96122, United States Of America,  
PORTOLA

**Opening Hours:**  
Monday 11:00 -21:00  
Tuesday 11:00 -21:00  
Wednesday 11:00 -21:00  
Thursday 11:00 -21:00  
Friday 11:00 -21:00  
Saturday 11:00 -21:00  
Sunday 24:00 -20:00

Made with [Menu](#)

