

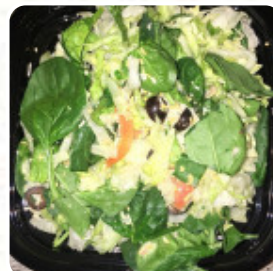


Subway Menu

<https://menuweb.menu>

20015 93rd St, 53104, Bristol, US, United States

+12628577022 - https://restaurants.subway.com/united-states/wi/bristol/20015-93rd-street?utm_source=yext-other&utm_medium=local&utm_term=acq&utm_content=68059&utm_campaign=evergreen-2020



The **menu of Subway** from Bristol includes **90** dishes. On average the *dishes or drinks* on [the menu](#) cost approximately \$9.6. You can view the categories on the menu below. Subway locations often offer varying experiences, and this one seems to encapsulate the spectrum. While some customers lamented slow service, unprofessional staff, and inaccuracies with orders, others shared glowing reviews of friendly employees, particularly praising individuals like Jocelyn and Chris for their exemplary service and attention to detail. Many noted the fresh ingredients and positive atmospheres, especially during busier hours. Consistent complaints about the drive-thru experience were countered by those who enjoyed more personal interactions inside the restaurant. Overall, this location shines in some moments while struggling in others, making it a mixed bag for patrons.

Subway Menu



Non Alcoholic Drinks

FANTA

Dessert

COOKIES

Japanese Specialties

CHICKEN TERIYAKI

Vegetarian Dish

VEGGIE PATTY

Popular Items

11 SUBWAY CLUB

Shareable Desserts

6 PACK COOKIE BOX (0 CALS) \$5.0

Deli Heroes

GARLIC ROAST BEEF

Footlong Pro®

MEATBALL MARINARA (540 CALS) \$10.3

Italian

MEATBALL MARINARA \$7.1

18 THE ULTIMATE B.M.T

Salads

COLD CUT COMBO (160 CALS) \$9.4

B.L.T. (210 CALS) \$10.4

BUFFALO CHICKEN (300 CALS) \$10.3

BLACK FOREST HAM (120 CALS) \$9.4

Breakfast

 STEAK, EGG CHEESE WRAP (820 CALS) \$9.9

 BACON, EGG CHEESE WRAP (860 CALS) \$9.7

EGG CHEESE WRAP (700 CALS) \$9.9

BLACK FOREST HAM, EGG CHEESE WRAP (770 CALS) \$9.9

Chicken

SWEET ONION CHICKEN TERIYAKI \$8.2

20 ELITE CHICKEN BACON RANCH

ROTISSERIE CHICKEN \$8.2

GRILLED CHICKEN \$8.1

BUFFALO CHICKEN \$7.9

Ingredients Used

TOMATOES

CHEESE

BLACK FOREST HAM \$7.1

CHICKEN TERIYAKI

OVEN-ROASTED TURKEY HAM \$8.2

TUNA \$8.0

These Types Of Dishes Are Being Served

BREAD

SALAD

CHICKEN

PANINI

ROAST BEEF \$8.7

OVEN ROASTED TURKEY

Subway Menu



Sandwiches

STEAK CHEESE	\$8.2
EGG CHEESE	\$7.1
BLACK FOREST HAM, EGG CHEESE	\$7.1
BACON, EGG CHEESE	\$7.1
VEGGIE DELITE	\$6.6
B.L.T.	\$8.0
ITALIAN B.M.T.	\$8.2

Subway® Series



#5 BELLA MOZZA	\$9.0
THE PHILLY	\$8.6
#2 THE OUTLAW	\$8.6
12 TURKEY CALI CLUB	
#3 THE MONSTER	\$9.0
#4 SUPREME MEATS	\$9.8
#10 ALL-AMERICAN CLUB	\$9.2
#9 THE CHAMP	\$8.2
#8 THE GREAT GARLIC	\$8.8
#6 THE BOSS	\$8.2

No Bready Bowls™



TUNA (550 CALS)	\$11.8
SWEET ONION CHICKEN TERIYAKI (350 CALS)	\$12.3
STEAK CHEESE (380 CALS)	\$12.3
SPICY ITALIAN (550 CALS)	\$10.3
ROTISSERIE-STYLE CHICKEN (230 CALS)	\$11.7
ROAST BEEF (230 CALS)	\$12.5
OVEN ROASTED TURKEY HAM (160 CALS)	\$11.6

OVEN ROASTED TURKEY (150 CALS)	\$11.7
ITALIAN B.M.T. (410 CALS)	\$11.8
GRILLED CHICKEN (200 CALS)	\$12.5
COLD CUT COMBO (260 CALS)	\$10.3
B.L.T. (360 CALS)	\$11.3
BUFFALO CHICKEN (380 CALS)	\$11.1
BLACK FOREST HAM (170 CALS)	\$10.5

Wraps



MEATBALL MARINARA (810 CALS)	\$10.3
TUNA (820 CALS)	\$11.8
SWEET ONION CHICKEN TERIYAKI (590 CALS)	\$12.3
STEAK CHEESE (570 CALS)	\$12.3
SPICY ITALIAN (820 CALS)	\$10.5
ROTISSERIE-STYLE CHICKEN (500 CALS)	\$11.7
ROAST BEEF (500 CALS)	\$12.5
OVEN ROASTED TURKEY HAM (440 CALS)	\$11.6
OVEN ROASTED TURKEY (430 CALS)	\$11.7
VEGGIE DELITE (330 CALS)	\$9.0
BLACK FOREST HAM (440 CALS)	\$10.5
BUFFALO CHICKEN (560 CALS)	\$11.1
B.L.T. (620 CALS)	\$11.3
COLD CUT COMBO (530 CALS)	\$10.3
GRILLED CHICKEN (470 CALS)	\$12.5

Subway Menu



ITALIAN B.M.T. (680 CALS)

\$11.8

Subway

20015 93rd St, 53104, Bristol,
US, United States

Opening Hours:

Monday 08:00-20:30
Tuesday 08:00-20:30
Wednesday 08:00-20:30
Thursday 08:00-20:30
Friday 08:00-20:30
Saturday 08:00-20:30
Sunday 08:00-20:30

Made with [Menu](#)

