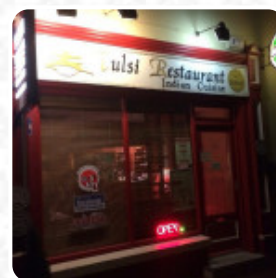
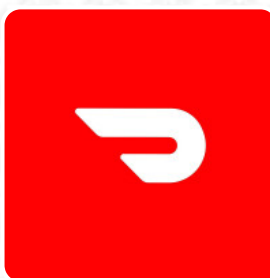




## Breakfast Station Menu

<https://menuweb.menu>

8405 Northcliffe Blvd, 34606, Spring Hill, US, United States  
+13526008905 - <https://www.breakfaststationcentral.com/>



The place from Spring Hill offers **97** different **courses and drinks on [the menu](#)** at an average price of \$10.6. Breakfast Station in Spring Hill, FL, is a charming American restaurant boasting an impressive average rating of 4.4 stars. Open daily from 7:00 AM to 3:00 PM, it's the perfect spot for a satisfying breakfast or lunch. To avoid the rush, feel free to call ahead and reserve your table at (352) 600-8905. Prefer dining at home? You can conveniently order your favorite dishes through DoorDash. If you're looking for similar dining experiences, don't forget to check out Mr. Hot Pot and Domino's Pizza. Have you dined with us before? We'd love to hear your thoughts—leave a review and share your experience!.

# Breakfast Station Menu



## Sandwiches & Hot Paninis

HAMBURGER \$11.8

## Toast

FRENCH TOAST \$8.0

## Fish Dishes

FISH & CHIPS

## Chicken Dishes

CHICKEN TENDERS \$11.9

## Dessert

CREPES

## Quesadilla

SPINACH TURKEY QUESADILLA \$14.0

## Cocktails

BLOODY MARY

## Lunch

DEPOT MELT \$12.9

## Main

SUNRISE OMELET \$14.0

## Vorspeisen / Extra Portion

DRESSING \$1.0

## Sweets & Desserts

FRUIT CUP \$3.9

## Sandwiches And Wraps

SEABOARD (FISH SANDWICH) \$14.0

## Burgers And Sandwiches

SMOKESTACK BURGER \$14.0

## Breakfast Specials

COUNTRY FRIED STEAK  
BREAKFAST \$14.0

## Dinner Entrées

MEATLOAF DINNER \$14.0

## Homestyle Dinners

LIVER ONIONS \$14.0

## Omelets

DENVER OMELET \$13.0

## 3-Egg Omelets

HAM CHEESE OMELET \$13.0

## Eggs Benedict

FLORENTINE BENEDICT \$14.0

## Breakfast Skillets

STEAK CHEESE SKILLET \$14.0

## Breakfast Favorites

SMOKED SAUSAGE BREAKFAST \$14.0

# Breakfast Station Menu



## Hot Drink

HOT CHOCOLATE \$3.9

## Salads (Raad)

STUFFED TOMATO SALAD \$14.0

## Breakfast Meats

BACON (4) \$5.8

## Poorboy's Omelets

GARDEN OMELET \$13.0

## Catering Beverages

GALLON SWEET ICED TEA \$7.0

## Sandwich And Tacos

SMOTHERED CHICKEN SANDWICH \$13.0

## Garden District

THE BIG "C" SALAD \$14.0

## Salads And Chili

BOWL OF CHILI \$5.0

## Railroad Yard Omelets

BAGGAGE CAR OMELET \$14.3

## Depot Breakfast Favorites

DEPOT BREAKFAST \$13.0

## Drink (Beverages)

LARGE JUICE \$4.6

## Three Egg Omelets (Archived)

TEXAS OMELET \$14.0

## Breakfast Goody's Skillets

GARDEN SKILLET BREAKFAST \$14.0

## Pumping Station

GALLON UNSWEET ICED TEA \$7.0

## Restaurant Category

FRENCH

## Egg Combo Classic

NORFOLK WESTERN BREAKFAST \$11.0

## Railyard Omelets

CROSSROADS OMELET \$14.0

## Side Dishes

TATER TOTS \$3.5

ONION RINGS \$5.9

## Wraps

CBR WRAP \$12.9

PHILLY WRAP \$12.9

## Starters & Salads

FRENCH FRIES

# Breakfast Station Menu



FRENCH FRIES \$3.5

## Chicken

BUFFALO CHICKEN SANDWICH \$12.0

GRILLED CHICKEN \$12.0

## Sauces

SALSA \$1.0

APPLESAUCE \$3.5

## Starters

LOADED TATER TOTS \$5.9

CHOPPED STEAK DINNER \$14.0

## Mexican Dishes

QUESADILLA \$14.0

BREAKFAST BURRITO \$11.0

## Potatoes

HASH BROWNS

HASHBROWNS \$3.9

## Hot Drinks

COFFEE

HOT TEA \$3.0

## Popular Items

ALMOST FAMOUS CRUNCH TOAST \$10.3

CASEY JONES (BISCUIT GRAVY) \$8.0

## Lunch Served Almost All Day

SWISS SIRLOIN SANDWICH \$12.9

COACH \$12.9

## Skillet Central

SOUTHERN SKILLET BREAKFAST \$14.0

MEAT TRIO SKILLET BREAKFAST \$14.3

## Burger

MUSHROOM SWISS BURGER \$14.0

BACON CHEESE BURGER \$14.0

CHEESEBURGER \$13.0

PATTY MELT \$14.0

## Beverages

CHOCOLATE MILK \$4.3

SWEET TEA \$3.9

SMALL JUICE \$3.0

UNSWEET TEA \$3.9

## Sandwiches

GRILLED CHEESE \$10.6

JIM'S BLT

REUBEN SANDWICH

CHICKEN CLUB \$14.0

BOX CAR SANDWICH \$14.0

## Ingredients Used

EGG

SAUSAGE

COTTAGE CHEESE \$3.5

CHEESE

# Breakfast Station Menu



MILK \$3.9

## These Types Of Dishes Are Being Served



QUESADILLAS  
TUNA STEAK  
TOSTADAS

PANINI

SOUP \$3.3

## Salads

TOP BRASS SALAD \$14.0

REFRIGERATOR CAR SALAD \$14.0

TOSSED SALAD \$5.9

CRISPY CHICKEN SALAD \$14.0

SANTA FE SALAD \$14.0

COLESLAW \$3.5

## Breakfast



COUNTRY OMELET \$14.3

ENGINEER (HAM  
STEAK) \$14.0

CLASSIC BENEDICT \$14.0

TRAIN STATION \$15.3

HOBO (CORNED BEEF HASH) \$14.0

2 SAUSAGE LINKS \$5.8

# Breakfast Station

8405 Northcliffe Blvd, 34606,  
Spring Hill, US, United States

**Opening Hours:**  
Monday 07:00-14:40  
Tuesday 07:00-14:40  
Wednesday 07:00-14:40  
Thursday 07:00-14:40  
Friday 07:00-14:40  
Saturday 07:00-14:40  
Sunday 07:00-14:40

Made with [Menu](#)

