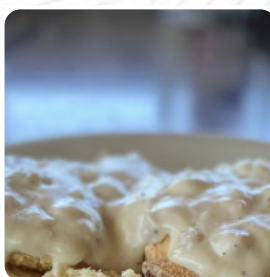
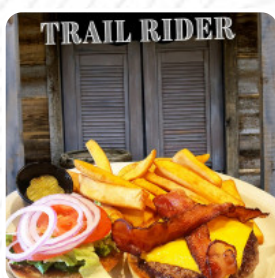
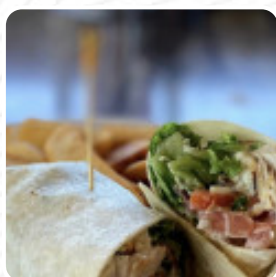


Jeff's California Cattle Co Menu

<https://menuweb.menu>

400 East Cypress Avenue, Redding, 96002, United States Of America
+15302213572 - <http://www.jeffscattleco.com/>



The restaurant from Redding offers **109** different **dishes and drinks** on [the menu](#) at an average price of \$11.3. Jeff's California Cattle Co in Redding, CA is a popular American restaurant with an average rating of 4.4 stars. Visit today from 7:00 AM to 3:00 PM and don't forget to reserve your table by calling ahead at (530) 221-3572. Enjoy a wide variety of dishes and great coffee at Jeff's California Cattle Co. If you're looking for similar options, check out Redding Reviews and Guadalajara Mexican Restaurant. Share your dining experience by leaving a review!.

Jeff's California Cattle Co Menu



Salads

COBB SALAD

Sandwiches & Hot Paninis

HAMBURGER

Mains

THE BIG STACK \$15.5

Toast

FRENCH TOAST

Side Dishes

POTATO CHIPS

Schnitzel

CHICKEN FRIED STEAK

Starters & Salads

FRENCH FRIES

Sauces

GRAVY

Starters

6OZ NEW YORK STEAK EGGS \$15.0

Potatoes

HASH BROWNS \$5.7

Pancakes

HOT CAKES DELUXE \$13.5

Paninis

THE SUZIE-Q \$10.5

American Food

EGGS BENEDICT \$14.5

Kalte Alkoholfreie Getränke

MUG ROOT BEER \$3.5

Egg Dishes

OMELETTE

Milk Shakes

MILK SHAKE \$7.1

Sweets & Desserts

BELGIAN WAFFLE \$11.5

Light Meals

CINNAMON ROLL FRENCH TOAST \$13.5

Drink

TROPICANA PINK LEMONADE \$3.5

Favorites

CHICKEN FRIED SKILLET \$15.0

Various

CHICKEN FRIED STEAK EGGS \$14.5

Breakfast Dishes

CALIFORNIA OMELETTE \$14.5

Jeff's California Cattle Co Menu



Kids & Seniors

HAM EGGS \$13.5

Skillets

COUNTRY SKILLET \$14.5

Three Egg Omelettes

HAM CHEESE OMELETTE \$14.5

Belgian Waffles

WAFFLE EGGS \$14.5

Senior & Childrens Meal

LINKS EGGS \$13.5

Juices And Milk*

ORANGE JUICE SMALL \$4.0

Chicken Pizzas

THE CORRAL \$14.5

Omelet

COUNTRY OMELETTE \$14.5

Pastas & Skillets

SOUTHWEST SKILLET \$14.5

2 Egg Breakfasts

BACON STRIPS EGGS \$13.5

I'm Benedicted

PESTO BENEDICT \$14.5

Outrageous Omelettes

THE ULTIMATE OMELETTE \$17.0

3 Eggs Omelettes

PESTO OMELETTE \$15.5

Pancakes, French Toast, And Waffles

CHOCOLATE CHIP PANCAKES \$10.5

Most Ordered

EL JEFFE BREAKFAST BURRITO \$14.5

Omelettes \$8

VEGETARIAN OMELETTE \$14.5

Hot Off The Trail

COUNTRY BREAKFAST \$14.5

Omelettes/ Scrambles

CHILI OMELETTE \$15.5

Accelerator

HOT CHOCLATE \$4.3

Restaurant Category

FRENCH

Non Alcoholic Drinks

ICED TEA \$3.4

MOUNTAIN DEW \$3.5

Jeff's California Cattle Co Menu



Drinks

BRISK RASPBERRY TEA \$3.5

MILK SMALL \$3.3

Soft Drinks

PEPSI \$3.5

DR PEPPER

Mexican Dishes

BURRITO

BREAKFAST BURRITO

Hot Drinks

HOT TEA \$3.4

COFFEE

Popular Items

CORNED BEEF HASH EGGS \$14.5

1/2 BISCUITS GRAVY \$7.7

French Toast & Waffles

BELGIAN WAFFLE (NO TOPPINGS) \$10.5

CIN ROLL FRCH TST COMBO \$15.5

Two Egg Dishes

PATTYS EGGS \$14.5

1/2LB BURGER STEAK EGGS \$14.5

Cowboy Breakfasts

COUNTRY FRIED NEW YORK STEAK \$15.5

THE BULL RIDERS SAMPLER \$18.5

Farmhouse Omelettes

SAN FRANCISCO JEFFS \$15.5

CFS OMELETTE \$15.0

Burger

CHEESE BURGER

CHEESEBURGER

BACON CHEESEBURGER

Dessert

CINNAMON ROLL \$4.7

CREPES

COOKIES

Beverages

SIERRA MIST \$3.5

DIET PEPSI \$3.5

MILK LARGE \$4.3

Beverages - All Day

TOMATO JUICE LARGE \$5.0

APPLE JUICE (LARGE)

ORANGE JUICE (LARGE)

Cowhands' Favorites

ERIKS EVERYDAY BREAKFAST \$12.5

BIG JOHNS REDNECK BENNY \$14.5

BUDS SCRAMBLE \$11.5

Juice

CRANBERRY JUICE LARGE \$5.0

CRANBERRY JUICE SMALL \$4.0

Jeff's California Cattle Co Menu



TOMATO JUICE SMALL	\$4.0
APPLE JUICE SMALL	\$4.0

These Types Of Dishes Are Being Served

TOSTADAS
BURGER
SALAD
COBB

Omelettes



THE TEXAN	\$20.5
THE PORTUGUESE	\$15.5
DENVER OMELETTE	\$14.5
STEAK OMELETTE	\$15.5
MEXICAN OMELETTE	\$14.5

Breakfast

FRENCH TOAST EGGS	\$14.5
THE LUMBERJACK	\$14.5



ITALIAN SAUSAGE EGGS	\$13.5
LINGUICA EGGS	\$14.5
CHICKEN FRIED CHICKEN EGGS	\$14.0
FRENCH TOAST DELUXE	\$13.5
CHICKEN WAFFELS	\$15.5
FRUIT BOWL	\$8.0

Ingredients Used



SAUSAGE
BUTTER
SYRUP
POTATOES
FRUIT
CHEESE
CHILI
BACON
CHOCOLATE
EGG
PESTO

Jeff's California Cattle Co

400 East Cypress Avenue,
Redding, 96002, United States Of
America

Opening Hours:
Monday 07:00 -15:00
Tuesday 07:00 -15:00
Wednesday 07:00 -15:00
Thursday 07:00 -15:00
Friday 07:00 -15:00
Saturday 07:00 -15:00
Sunday 07:00 -15:00

Made with [Menu](#)

