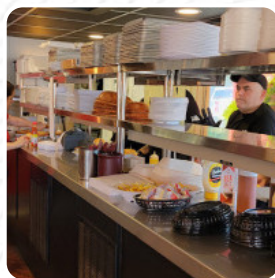




Mitchell's Family Diner Menu

<https://menuweb.menu>

1400 N Cocoa Blvd Cocoa, FL 32922-6957, United States
+13213382909 - <http://www.mitchellscocoa.com/>



The menu of Mitchell's Family Diner from Cocoa includes **117** menus. On average the **menus or drinks on the menu** cost approximately \$8.7. You can view the categories on the menu below. Mitchell's Restaurant, nestled in Cocoa, FL, is a charming American eatery that has garnered an impressive average rating of 4.3 stars. Open daily from 7:00 AM to 2:00 PM, it's the perfect spot for a delightful breakfast or lunch. Want to get ahead of the crowd or reserve a cozy table? Give us a call at (321) 338-2909. If you're in the mood for a quick bite or looking for similar dining options, check out Subway and Chaparral [Mexican](#) and Cuban Restaurant. Have you dined with us before? We would love to hear your feedback—leave a review and share your experience!.

Mitchell's Family Diner Menu



Non Alcoholic Drinks

WATER

Pizza

FRANK'S BUFFALO CHICKEN \$13.3

Mains

SOUTHERN SKILLET \$11.0

Vegetarian

GREEN BEANS \$3.0

Salad

GRILLED JUMBO SHRIMP SALAD \$14.0

Snacks

MOZZARELLA STICKS \$6.0

Toast

FRENCH TOAST

Schnitzel

CHICKEN FRIED STEAK

Starters & Salads

FRENCH FRIES

Side Orders

BASKET OF ONIONS RINGS \$4.0

Fish

SEA BASS

Chicken Dishes

CHICKEN TENDERS \$4.0

Steaks

COUNTRY FRIED STEAK \$13.0

Starters

KICKEN BOURBON CHICKEN \$14.0

Indian

FRIED OKRA \$4.0

Fries

HOME FRIES

Potatoes

HASH BROWNS

Appetizers

HOUSE CHIPS \$3.0

Café

FRESH GROUND COFFEE \$2.8

Beverages

CHOCOLATE MILK \$3.5

Sweets & Desserts

FRUIT CUP \$4.0

Favorites

COUNTRY FRIED CHICKEN \$14.0

Mitchell's Family Diner Menu



Apps

BASKET OF CHILI CHEDDAR FRIES \$6.0

Lunch Entrées

LIVER AND ONIONS \$12.0

Omelets

GARBAGE CAN OMELET \$12.8

3-Egg Omelets

VEGGIE OMELET \$10.5

Breakfast Specialties

FRESH MADE GOLDEN BROWN WAFFLE \$6.0

Breakfast Beverages

HOT ORGANIC ENGLISH TEA \$2.5

Deluxe Burgers

JALAPENO CHEDDAR BURGER \$12.0

Hot Plates

FRIED JALAPENOS \$6.0

Breakfast In Hand

TWO EGG SANDWICH \$8.0

Breakfast Omelets

SHRIMP SPINACH PROVOLONE \$12.8

The Waffle Iron

CHICKEN AND WAFFLES \$10.0

Fries and more

APPLE SAUCE \$2.0

Righteous Chicken

DELUXE CHICKEN BISCUIT \$10.5

Garlic Menu

JUMBO SHRIMP TRAY \$14.0

Briazz Sandwiches

SOUTHERN BELLE \$12.0

Egg - Cellent Omelets - Breakfast

WILD WESTERN \$10.0

Restaurant Category

FRENCH

Love From The Grill

GRILLED PORK CHOPS

Drinks

ORGANIC MILK \$3.0

BEER

Chicken

FRIED CHICKEN

CHICKEN WAFFLES

Sauces

DIPS

GRAVY

Mitchell's Family Diner Menu



Soft Drinks

ORANGE JUICE	\$3.0
APPLE JUICE	\$2.5



COFFEE
TEA

Mexican Dishes

BREAKFAST BURRITO	\$8.0
BURRITO	

Waffles

ERICA'S FAVORITE	\$9.0
PEANUT BUTTER BACON EXPLOSION	\$14.5

Brunch

SILVER DOLLAR PANCAKES	\$3.0
STEAK AND EGGS	

Uncategorized

OMELETS YOUR WAY	\$9.0
ONE ONE ONE	

Entrées

FRIED SHRIMP	\$6.0
FRIED PICKLES	\$6.0
BASKET OF FRENCH FRIES	\$3.0

Dessert

BERRIES AND CREAM	\$9.5
WAFFLE	
CREPES	

Hot Drinks

CREAMY HOT COCOA	\$3.0
------------------	-------

Chicken Sandwich

POPEYE GRILLED CHICKEN	\$15.5
KICKIN BOURBON CHICKEN MELT	\$13.0
MITCHELL'S CLUB	\$12.0

Trays

FRANK'S BUFFALO CHICKEN TENDER TRAY	\$11.3
CHICKEN TENDER AND GRAVY TRAY	\$10.0
KICKIN BOURBON CHICKEN TENDERS	\$10.5

Salads

SIDE SALAD	\$4.0
GRILLED OR FRIED CHICKEN SALAD	\$12.0
CHEF SALAD	\$11.0
BUFFALO CHICKEN SALAD	\$12.5

Sandwiches

GRILLED CHEESE	\$5.0
COUNTRY FRIED STEAK SANDWICH	\$11.0
CHICKEN CLUB	\$14.5
B.L.T.	

Side Dishes

HUSH PUPPIES	\$2.5
MASHED POTATOES AND GRAVY	\$3.0

Mitchell's Family Diner Menu



BASKET OF BACON CHEDDAR FRIES	\$6.0
FULLY LOADED BOWL OF CHILI	\$9.8


Burger

8OZ CHAR GRILLED STEAK BURGERS	\$11.0
ALL AMERICAN BURGER	\$13.5
MUSHROOM PROVOLONE BURGER	\$12.0
PATTY MELT	
HUMPTY DUMPTY BURGER	\$14.5

These Types Of Dishes Are Being Served

SIRLOIN STEAK	\$18.0
TUNA STEAK	
PANINI	
PORK CHOPS	
TOSTADAS	
PORK CHOP	

Breakfast

	BUILD YOUR OWN BREAKFAST	\$6.0
	2 EGGS, AMERICAN CHEESE GRITS, CORNED BEEF HASH AND TOAST	\$11.3

2 EGGS, HASH BROWNS, COUNTRY FRIED CHICKEN AND BISCUIT	\$14.0
--	--------

2 EGG WHITES, SLICED TOMATOES, GRILLED CHICKEN BREAST AND TOAST	\$14.0
---	--------

2 EGGS, CHEESE GRITS, FRIED BEER BATTERED HADDOCK AND TOAST	\$17.8
---	--------

OATMEAL AND FRUIT CUP	\$7.0
-----------------------	-------

FRENCH TOAST STICKS	\$4.0
---------------------	-------

TOMATO SLICES	\$2.5
---------------	-------

HASH BROWN	
------------	--

TWO EGGS	
----------	--

Ingredients Used

	GRILLED SHRIMP	\$6.0
	CHILI	
	SAUSAGE	
	BISCUIT	
	PORK MEAT	
	POTATOES	
	BACON	
	SHRIMP	
	HADDOCK	
	CHICKEN BREAST	
	MOZZARELLA	

Mitchell's Family Diner Menu



Mitchell's Family Diner

1400 N Cocoa Blvd Cocoa, FL
32922-6957, United States

Opening Hours:

Monday 07:00-14:00
Tuesday 07:00-14:00
Wednesday 07:00-20:00
Thursday 07:00-20:00
Friday 07:00-20:00
Saturday 07:00-20:00
Sunday 07:00-14:00

Made with [Menu](#)

