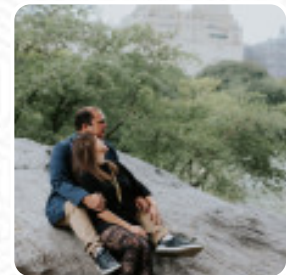




Silver Diner Menu

<https://menuweb.menu>

8250 Gateway Overlook Dr, Elkridge, MD 21075, United States, West Elkridge
+14437335213 - <http://silverdiner.com>



The *menu of Silver Diner* from West Elkridge includes **134** courses. On average the **courses or drinks on the [menu](#)** cost approximately \$16.5. You can view the categories on the menu below. Silver Diner offers a unique dining experience with a blend of traditional comfort food and inspired vegan options. While loyal patrons praise the quality and variety, particularly in-house, some have noted inconsistencies with takeout, including stale food and bland flavors. Dishes like the Mocha Cold Brew have been critiqued for lacking depth, while others enjoy standout items such as the chicken tenders and Beyond Meatballs Mac n' Cheese. Service is generally reliable, with attentive staff enhancing the experience. The seasonal menu changes add excitement, making it a potential culinary adventure worth revisiting.

Silver Diner Menu



Pasta

PASTA PRIMAVERA

Vegetarian

CAULIFLOWER

Burger

BEYOND BURGER

Toast

AVOCADO TOAST \$16.5

Meat Dishes

MEATBALLS

Salad

COLE SLAW

Drinks

COLD BREW

Starters & Salads

FRENCH FRIES

Starters

CHOPPED COBB \$17.6

Spezial

TOASTS \$3.3

Main

COUNTRY FRIED STEAK EGGS

Bowl

BURRITO BOWL

Shakes

SHAKE

Digestivi - Digestifs

LIMONCELLO

House Specials

COUNTRY SCRAMBLER \$17.6

Hot Drinks

COFFEE

Bread

PITA

Sweets & Desserts

BELGIAN WAFFLE \$11.0

Wraps And Sandwiches

TRIPLE DECKER CLUB \$18.7

French Toast

CARAMEL FRENCH TOAST \$14.3

Breakfast Specials

POWER BREAKFAST \$17.6

Breakfast Dishes

CALIFORNIA OMELETTE \$17.1

Silver Diner Menu



German Specialties

FRIKADELLE

Chicken, Ribs, And More

CHICKEN TENDER PLATTER \$20.9

Bill's Famous Burgers

BACON BLEU BURGER \$19.8

Mixed Dishes

BAGELS \$2.8

Condiments And Sauces

HUMMUS

Belgium Waffles (Breakfast)

BELGIAN WAFFLE EGGS \$14.9

Complete Kids Meals

KIDS ENTREE MEALS \$6.6

Burgers, Sliders, & Sandwiches

KICKIN SHORT RIB BURGER \$20.4

Salad & Soups

ITS BACK! ANCIENT GRAIN SHRIMP BOWL \$20.9

Classic Burgers- 100% Certified Angus Beef Or

Select Your Own Protein Choice.

BYOB (BUILD YOUR OWN BURGER) \$16.5

Hot From Our Grill

GRILLED CHEESE DELUXE \$12.1

Brunch (Sat-Sun 11Am- 2Pm)

SMOKED SALMON BENEDICT \$20.9

Diner Classics, Seafood & Steak

NEW! GIANT SUPER LUMP CRAB CAKE FRIES \$29.7

Hearty American Breakfast

LUMBERJACK BREAKFAST \$18.2

Seafood

SHRIMP SCAMPI \$24.2

CRAB CAKES

Soft Drinks

JUICE \$3.7

DELUXE SHAKES \$11.0

Omelettes

PHILLY STEAK OMELETTE \$17.6

WESTERN OMELETTE \$15.4

Silver Diner Menu



American Food

- EGGS BENEDICT
- MAC AND CHEESE

Milkshakes

- MILKSHAKE
- MILK SHAKES

Coffee

- MOCHA
- ICED COFFEE

Salad & Soups

- GRILLED FRESH SALMON CAESAR \$23.1
- LEMONY HUMMUS GREEK SALAD \$18.2
- CAULIFLOWER PITA BOWL

Sides

- EGGS
- SWEET POTATO

Burgers, Sliders, & Sandwiches

- NEW! CRAB CAKE SANDWICH \$22.0
- NEW! TOMATO BURRATA SANDWICH \$18.7

Salads

- GRILLED CHICKEN CAESAR \$19.8
- SIGNATURE SOUPS
- QUINOA SALAD

Side Dishes



- BREAKFAST MEATS \$4.4
- ENGLISH MUFFIN \$2.8
- SWEET POTATO FRIES

Mexican Dishes

- TACOS
- TACO
- BURRITO

Seasonal Specials

- NEW! CHIPOTLE SALMON SHRIMP \$28.6
- NEW! GIANT SUPER LUMP CRAB CAKE MASHED POTATOES \$29.7
- NEW! LAMB MEATBALLS PAPPARDELLE \$20.9

Restaurant Category

- VEGAN
- VEGETARIAN
- GLUTEN FREE

Dessert



- SINGLE SCOOP OF ICE CREAM \$1.7
- CREPES
- MILKSHAKES
- BREAD PUDDING

Burgers, Sliders, & Sandwiches



- RIBEYE PHILLY STEAK \$18.7
- TRIPLE-PICKLED FRIED CHICKEN \$19.3

Silver Diner Menu



NEW! HAWAIIAN LUAU BURGER	\$20.4
BEYOND MEAT MISO BURGER	\$18.7

Sandwiches

	TUNA MELT	\$14.3
	SOUTHWEST TURKEY	\$16.5
	CLASSIC BLT	\$13.2
PASTRAMI REUBEN		\$18.7
CALIFORNIA SANDWICH		

Diner Classics, Seafood & Steak

FREE-RANGE TURKEY PLATTER	\$23.1
CREEKSTONE BLACK ANGUS MEATLOAF	\$22.0
CALF’S LIVER, ONIONS CREMINI MUSHROOMS	\$22.0
LOCAL FLAT IRON STEAK	\$28.6
BAR HABOR-STYLE FISH CHIPS PLATTER	\$22.6
ALLEN FARMS ROASTED CHICKEN POT PIE	\$22.0


Popular Items

CARAMEL FRENCH TOAST EGGS	\$16.5
ROASTED HOME FRIES	\$4.4
THE AMERICAN FAVORITE	\$14.3
KIDS BREAKFAST MEALS	\$6.6
CORNED BEEF HASH EGGS	\$17.6
HICKORY SMOKEHOUSE CHEDDAR BURGER	\$20.4
WARM ROASTED LOCAL VEGGIE SALAD	\$17.6

These Types Of Dishes Are Being Served

- ICE CREAM
- NOODLES
- FISH
- BURGER
- PASTA
- TUNA STEAK
- SALAD

Ingredients Used

	TUNA	\$11.0
	EGG	
	ZUCCHINI	
QUINOA		
BRUSSELS SPROUTS		
CHILI		
MILK		
OATMEAL		
MANGO		
COCONUT		
TOFU		
CHEESE		
PEPPERMINT		

Breakfast

	BUTTERMILK PANCAKES EGGS	\$15.4
	ORGANIC BISON HUEVOS RANCHEROS	\$19.8
	JACK CHEDDAR CHEESE OMELETTE	\$12.7
PICKLE-BRINED FRIED CHICKEN WAFFLES		\$19.8

Silver Diner Menu



LOCAL FLAT IRON STEAK EGGS	\$25.3	BUTTERMILK BISCUITS (2)	\$2.2
BUTTERMILK PANCAKES	\$12.1		
BABY SPINACH, FETA CREMINI MUSHROOM OMELETTE	\$17.1		
OAT MILK BLUEBERRY PANCAKES	\$17.1		
ITS BACK! APPLE PIE-STUFFED FRENCH TOAST	\$18.7		
OAXACA (WAH-HAW-KAH) OMELETTE	\$17.6		
QUINOA COCONUT PANCAKES	\$16.5		
BURRATA SHAKSHUKA	\$18.7		
QUINOA FARRO BREAKFAST BOWL	\$18.7		
NEW! JUST EGG BREAKFAST TACOS	\$19.8		
CLASSIC EGGS BENEDICT	\$18.7		
BANANA SUNRISE BOWL	\$13.2		
WHIPPED GOAT CHEESE RICOTTA EGG WHITE OMELETTE	\$16.5		
NEW! GREEK YOGURT BREAKFAST	\$13.2		

Silver Diner

8250 Gateway Overlook Dr,
Elkridge, MD 21075, United States, West Elkridge

Opening Hours:
Monday 07:00-22:30
Tuesday 07:00-22:30
Wednesday 07:00-22:30
Thursday 07:00-22:30
Friday 07:00-00:15
Saturday 07:00-00:15
Sunday 07:00-22:30

Made with [Menu](#)

