

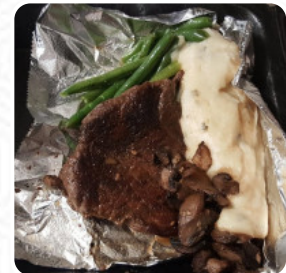
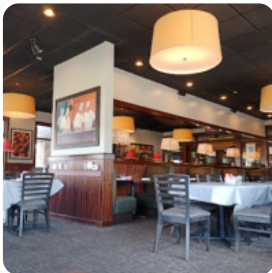


## Ruby Tuesday Menu

<https://menuweb.menu>

Ruby Tuesday, 4917 US-90, Pace, FL 32571, USA, United States

+18509943660 - <https://www.rubytuesday.com>



**The menu** of Ruby Tuesday from Pace comprises about **138** different courses and drinks. On average you pay about \$36.9 for a dish / drink. This restaurant experience has proven to be a tapestry of highs and lows. While some patrons rave about the impressive shrimp, sweet potato, and corn dishes, others lament the lackluster service and undercooked [seafood](#) options. Many found the ambiance stale, with suggestions that a lively makeover could enhance the overall vibe. Consistent themes include inattentive servers and lukewarm meals, underscoring a need for better management and food preparation. Despite these drawbacks, isolated dish success stories, like the grilled salmon and flavorful margaritas, suggest that with improvements, this establishment could reach its full potential as a dining destination.

# Ruby Tuesday Menu



## Soups

POTATO SOUP \$7.5

## Main Courses

POT ROAST \$24.0

## Snacks

MOZZARELLA STICKS \$11.9

## Sandwiches

GRILLED CHICKEN SANDWICH \$15.0

## Seafood

COCONUT SHRIMP PLATTER \$23.1

## Sweets

KID'S SUNDAE \$4.0

## Starters & Salads

FRENCH FRIES \$5.0

## Side Orders

FRESH GRILLED ZUCCHINI \$12.5

## Sauces

MAYO

## Fish

GRILLED SALMON \$23.1

## Kids

CRISPY CHICKEN TENDERS \$7.2

## Subs

PHILLY CHEESESTEAK HOAGIE \$18.0

## Nudelaufläufe

CHICKEN CARBONARA \$20.0

## American Food

MAC AND CHEESE

## Ribs

FULL RACK BABY BACK RIBS

## Vegetables

BUTTERED CORN \$5.0

## Beverages

BOTTLED WATER (16.9 OZ.)

## Hot Drinks

TEA

## Peste Si Fructe De Mare

NEW ORLEANS SEAFOOD \$21.0

## Appetizer From Kitchen

COCONUT SHRIMP APPETIZER \$14.9

## Sodas & Juices

GOLD PEAK TEA SWEET \$6.3

## Starches

RICE PILAF \$5.0

# Ruby Tuesday Menu



## Hoagies

MEATBALL HOAGIE \$10.0

## Customer Favorites

BONELESS WINGS APPETIZER \$16.0

## Dips

SPINACH ARTICHOKE DIP \$12.5

## In The Club

BACON CLUB \$9.0

## Sides

SWEET POTATO

## Garden Bar & Fresh Salads

HONEY-GLAZED SALMON BOWL \$23.5

## Garden Bar & Fresh Salads

CRISPY CHICKEN CAESAR SALAD \$17.0

## Asia-Sushi Menu

CRISPY SHRIMP \$7.2

## Non Alcoholic Drinks

RED BULL \$2.8

BOTTLED WATER \$1.8

## Pasta

PARMESAN SHRIMP PASTA \$21.0

BLACKENED SHRIMP SAUSAGE PASTA \$21.5

## Fish Dishes

FISH SANDWICH

FISH AND CHIPS

## Appetizer

SEAFOOD PLATTER \$25.0

LOADED FRIES \$6.1

## Baked Potatoes

LOADED BAKED POTATO \$6.1

BAKED POTATO \$5.0

## Kids Menu

MARINARA PASTA \$7.2

BUTTERY PASTA \$7.2

## Restaurant Category

GLUTEN FREE

MEXICAN

## These Types Of Dishes Are Being Served

SALAD

FISH

## Uncategorized

CHICKEN BROCCOLI PASTA \$20.0

CRISPY CHICKEN MAC 'N CHEESE

# Ruby Tuesday Menu



## Burger



|                    |        |
|--------------------|--------|
| AWESOME BURGER     | \$18.4 |
| CHEESEBURGER       | \$7.2  |
| BACON CHEESEBURGER |        |

## Burgers & Sandwiches



|                                 |        |
|---------------------------------|--------|
| SMOKEHOUSE<br>CHEESEBURGER*     | \$16.9 |
| JALAPEÑO BACON<br>QUESO BURGER* | \$13.5 |

|                                     |        |
|-------------------------------------|--------|
| ULTIMATE CRISPY CHICKEN<br>SANDWICH | \$16.5 |
|-------------------------------------|--------|

## Popular Items

|                          |        |
|--------------------------|--------|
| HICKORY BOURBON SALMON   | \$23.1 |
| HALF-RACK BABY-BACK RIBS | \$21.5 |
| RUBY'S CHEESEBURGER*     |        |

## New & Featured

|                    |        |
|--------------------|--------|
| RIB EYE* AND RIBS  | \$28.0 |
| CHILI QUESO BURGER | \$14.9 |
| MEATY BAKED PENNE  | \$17.5 |

## Ingredients Used

|        |
|--------|
| CORN   |
| SHRIMP |
| CHEESE |

## Salads

|                                 |        |
|---------------------------------|--------|
| GRILLED CHICKEN CAESAR<br>SALAD | \$17.0 |
| COLESLAW                        | \$5.0  |
| SALAD BAR                       | \$7.2  |
| GARDEN SALAD                    | \$12.5 |

## Starters

|                       |        |
|-----------------------|--------|
| CRAB DIP              | \$15.0 |
| LOADED CHEESE FRIES   | \$11.0 |
| CRISPY SHRIMP PLATTER | \$21.5 |
| LOADED TATER TOTS     | \$6.1  |

## Mexican Dishes

|                    |        |
|--------------------|--------|
| CHICKEN QUESADILLA | \$15.0 |
| QUESADILLA         | \$6.0  |
| FAJITAS            |        |
| CHICKEN FAJITAS    |        |

## Entrées

|                            |        |
|----------------------------|--------|
| RUBY'S SIGNATURE SAMPLER   | \$18.4 |
| LOADED CHILI CHEESE FRIES  | \$11.9 |
| BBQ CHICKEN STREET NACHOS  | \$18.0 |
| CHEDDAR CHEESE QUESO CHIPS | \$10.0 |
| CHICKEN WING BAR           | \$60.0 |
| STICKY RIBS                | \$13.5 |

## Chicken

|                         |        |
|-------------------------|--------|
| HICKORY BOURBON CHICKEN | \$23.1 |
| CHICKEN WINGS           | \$19.0 |
| ASIAGO BACON CHICKEN    | \$24.0 |
| CHICKEN PARMESAN        | \$25.0 |
| CHICKEN TACODILLA       | \$11.5 |
| GRILLED CHICKEN         | \$7.2  |

## Dessert

|                          |       |
|--------------------------|-------|
| NEW YORK CHEESECAKE      | \$9.4 |
| LEMON ITALIAN CREAM CAKE | \$9.4 |
| RED VELVET CAKE          | \$7.0 |
| CHOCOLATE LAVA CAKE      | \$9.4 |

# Ruby Tuesday Menu



|                               |       |
|-------------------------------|-------|
| CHOCOLATE CHIP COOKIE SKILLET | \$9.4 |
| PUMPKIN CHEESECAKE            | \$8.7 |

## Ribs & Steaks

|                    |        |
|--------------------|--------|
| 12 OZ RIB EYE*     |        |
| 8OZ TOP SIRLOIN    |        |
| 6 OZ RIB EYE*      | \$23.1 |
| 6OZ TOP SIRLOIN    |        |
| STEAK TACODILLA    | \$12.5 |
| RIBS CRISPY SHRIMP | \$28.0 |

## Side Dishes

|                     |       |
|---------------------|-------|
| TATER TOTS          | \$5.0 |
| ONION RINGS         | \$9.0 |
| STEAMED BROCCOLI    | \$5.0 |
| ROASTED BABY BELLAS | \$7.5 |
| GRILLED ZUCCHINI    | \$5.0 |
| MASHED POTATOES     | \$5.0 |
| SWEET POTATO FRIES  | \$7.5 |

## Family Bundle Meals



|   |        |
|---|--------|
| GRILLED CHICKEN FAMILY DINNER           | \$40.0 |
| BURGER FAMILY DINNER                    | \$40.0 |
| BUTTERMILK CHICKEN TENDER FAMILY DINNER | \$35.0 |
| BLACKENED SHRIMP SAUSAGE                | \$40.0 |
| HAM PEA PASTA SALAD                     | \$12.5 |
| PHILLIPSBURG BROCCOLI SALAD             | \$12.5 |

|                       |       |
|-----------------------|-------|
| GOLD PEAK TEA UNSWEET | \$6.3 |
|-----------------------|-------|

## Ruby's Pantry

|                                   |         |
|-----------------------------------|---------|
| 1% CHOCOLATE MILK 7 OZ            | \$1.6   |
| OCEAN SPRAY CRANBERRY JUICE 32 OZ | \$3.7   |
| 2% WHITE MILK GALLON              | \$8.7   |
| 1 WHITE MILK 7 OZ.                | \$1.6   |
| SLICED AMERICAN CHEESE 5 LB       | \$25.0  |
| SLICED CHEDDAR CHEESE 1.5 LB      | \$12.5  |
| WHIPPED BUTTER 3 LB               | \$17.5  |
| USDA CHOICE BURGERS 7OZ. 36 CT    | \$118.7 |
| SIRLOIN STEAKS 6 OZ 84CT          | \$431.2 |
| BRIOCHE BURGER BUN 12 CT          | \$8.7   |
| FLOUR TORTILLAS 6 24 CT           | \$4.0   |
| FLOUR TORTILLAS 11 12 CT          | \$7.5   |
| MASHED POTATOES 5 LB.             | \$12.7  |
| 6OZ CHICKEN BREAST 40 LB CASE     | \$243.7 |
| HICKORY BOURBON BBQ GAL           | \$27.3  |
| TOMATO BASIL SAUCE 6#10 CAN       | \$17.9  |
| PASTA, PENNE 10 LB.               | \$35.0  |
| PASTA, ROTINI 10 LB               | \$35.0  |
| BABY BACK RIBS CASE 44 LB.        | \$325.0 |
| SHRIMP, P&D 51/60 CT              | \$157.5 |
| SHRIMP, BREADED 35/40 CT          | \$220.6 |
| SHRIMP, P&D TAIL ON 21/25 CT      | \$210.0 |
| RIB EYE, 12OZ CASE (44 CT)        | \$645.6 |
| SIRLOIN STEAK, 8OZ CASE (60 CT)   | \$398.5 |



# Ruby Tuesday Menu



## Ruby Tuesday

Ruby Tuesday, 4917 US-90,  
Pace, FL 32571, USA, United  
States

### Opening Hours:

Thursday 11:00-22:00

Friday 11:00-23:00

Saturday 11:00-23:00

Sunday 11:00-22:00

Monday 11:00-22:00

Tuesday 11:00-22:00

Wednesday 11:00-22:00

Made with [Menu](#)

