

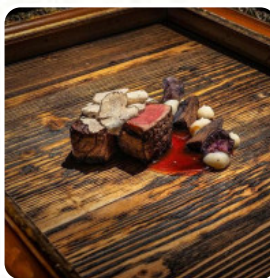
Locanda Moscal

Honey Biscuit Breakfast Lunch Menu

<https://menuweb.menu>

106 W Northwest Hwy, Mount Prospect, IL 60056, United States

+18477491766 - <http://honeybiscuitmp.com>



Locanda
Moscal

The menu of Honey Biscuit Breakfast Lunch from [Mount Prospect](#) includes 142 dishes. On average the dishes or drinks on [the menu](#) cost approximately \$10.6. You can view the categories on the menu below.

Honey Biscuit Breakfast Lunch Menu



Smoothies

FRESH BERRY \$8.0

Entrées

BUTCHER'S BLOCK

Soups

FIESTA SALAD

10 Most Popular

SPRING \$9.5

Main Courses

POT ROAST \$11.5

Burger

CLASSIC BURGER \$13.0

Side Orders

SIDE FRENCH TOAST \$5.0

Sauces

GRAVY

Starters

CARROT CAKE FRENCH TOAST \$9.0

Crepes

ORIGINAL CREPES \$9.2

Dumplings Mit Schweinefleisch

BLACK WHITE \$8.5

Gourmet-Pizzen

MEAT LOVER \$11.0

Toppings

CANADIAN BACON \$6.3

Main Menu

AUTUMN STEAK SALAD \$13.0

Waffles

OREO WAFFLE \$8.5

Egg Dishes

OMELETTE

Pastries

CINNAMON SWIRL \$8.5

Cold Coffee

CINNAMON LATTE \$4.0

Coffee

MOCHA

Refreshments

BUTTERMILK \$6.5

Handcrafted Burgers

CHIPOTLE RANCH BURGER \$14.0

Espresso

PEPPERMINT MOCHA \$4.0

Honey Biscuit Breakfast Lunch Menu



Large Spreads And Salads

CHICKEN SALAD 8OZ

Featured Items

PUMPKIN PANCAKES \$9.0

Handhelds

POT ROAST GRILLED CHEESE \$16.0

Old Favorites

FRENCH TOAST TRIO \$9.5

Hot Off The Griddle

FRESH FRUIT CREPES \$14.0

All Day Menu

HASH BROWN BENNY \$10.0

Omelets

MILE HIGH OMELET \$13.3

3-Egg Omelets

HAM CHEESE OMELET \$12.5

Skillets

FIESTA SKILLET \$14.5

Sides & Shares

SIDE EGGS

Tortilla Wraps

CHIPOTLE WRAP \$14.3

Hotcakes & French Toast

SIMPLE FRENCH TOAST \$9.5

Farm Fresh Eggs

CORNED BEEF HASH N EGGS

3 Egg Omelets

GOAT OMELET \$14.0

Breakfast - Omelets

SOUTH OFF THE BORDER \$10.0

Vegan Brunch

SAUSAGE PATTIES \$5.0

Our Hearty Omelets

BACON CHEESE OMELET \$12.5

Famous Crepes Bar

STRAWBERRY NUTELLA CREPES \$13.0

Perfect Additions And Sides

SIDE PANCAKES \$5.0

Flavors

BANANA FOSTER \$8.5

Customer Favorites

STRAWBERRY NUTELLA \$8.5

Honey Biscuit Breakfast Lunch Menu



Farm To Table

BLUEBERRY BREAD FRENCH TOAST \$12.0

Sides + Extras

FRUIT SIDE \$5.0

Poorboy's Omelets

GARDEN OMELET \$14.0

Hot Espresso Beverages

PUMPKIN SPICE LATTE \$4.0

Hearty Breakfasts

BISCUITS GRAVY \$15.0

Our Garden Salads

DOOR COUNTY CHICKEN SALAD \$15.0

Breakfast - Benedicts

AVOCADO CRAB CAKE BENNY \$13.0

Skillets - Breakfast

VEGGIE SKILLET \$14.0

Piadzizas

THE VEGGIE \$10.0

Gluten Free Breakfast

GF BREAKFAST SANDWICH \$13.0

Sandwiches & Wraps

CRANBERRY PECAN CHX SALAD SANDWICH \$13.3

Skillet Breakfast

WHOLE HOG SKILLET \$16.8

Signature Sweetness

CHOCOLATE CHERRY FRENCH TOAST \$9.0

Specialty Menu Items

CINNAMON SWIRL PANCAKES \$11.5

Lunch And Dinner Grilled Chicken Sandwiches

CALIFORNIA CHICKEN SANDWICH \$16.0

Signature Biscuits

BISCUIT HASH BROWN SANDWICH \$14.3

Breads And Cereals

CINNAMON TOAST \$8.0

Gluten Free Option

GF PANCAKES \$11.0

Restaurant Category

GLUTEN FREE

Eggs & Emeletes

SKIRT STEAK N' EGGS \$15.0

Honey Biscuit Breakfast Lunch Menu



Meat & Ribs

SAUSAGE LINKS \$6.0

Skillets, Scrambles & More

POT ROAST SKILLET \$16.8

Breakfast - Specialty Biscuit Items

HB COUNTRY BENEDICT \$9.0

Uncategorized

EGGS YOUR WAY WITH MEAT

Pizza

THE GREEK \$9.5

CLASSIC \$9.0

Toast

AVOCADO TOAST \$13.0

TOAST \$2.5

Sandwiches

TURKEY CLUB \$14.0

CRANBERRY TURKEY MELT \$10.0

Wraps

MORNING BURRITO \$14.0

HONEY MUSTARD CHICKEN WRAP \$14.3

Vegetarian Dishes

GREEN CHILAQUILES \$14.3

RED CHILAQUILES \$14.3

Soft Drinks

JUICE

ORANGE JUICE

Mexican Dishes

BURRITO

BREAKFAST BURRITO

Pancakes

BERRIES WILD PANCAKES \$12.5

STRAWBERRY NUTELLA LAYERED CAKES \$12.5

Winter Specials

CINNAMON RAISIN MELT \$10.0

SALTED PRAZLENUT LATTE \$4.0

Brunch

SPRING OMELET \$14.0

POT ROAST BENNY \$12.0

Hot Drinks

COFFEE

IRISH COFFEE

French Toast

FRESH BERRY FRENCH TOAST \$13.0

GF FRENCH TOAST \$11.0

Gluten Free

GF GRILLED CHEESE \$11.9

GF CHICKEN CLUB \$17.0

Honey Biscuit Breakfast Lunch Menu



Main

GREEK OMELET	\$14.0
BLACK WHITE PANCAKES	\$11.5
THE CHICKEN BISCUIT	\$10.0

Breakfast - Pancakes

HB CAKES	\$8.5
BERRIES WILD	\$9.0
NUTELLA LAYERED CAKES	\$8.5

Fall Specials

FALL SKILLET	\$11.0
ICED CAFE AU LAIT W/ COLD BREW	\$4.0
COOKIE BUTTER ICED COFFEE	\$4.0

These Types Of Dishes Are Being Served

COBB	\$15.0
BREAD	
WRAP	

Breakfast

EGGS YOUR WAY	\$13.6
MEAT LOVER OMELET	\$16.8
BUTTERMILK PANCAKES	\$9.2
CHICKEN BISCUIT	\$15.0

Dessert

BANANA BREAD FRENCH TOAST	\$12.0
WAFFLE	
CREPES	

CINNAMON ROLL	\$8.5
---------------	-------

Salads

HB CHOPPED SALAD	\$15.0
GREEK SALAD	\$15.0
HARVEST SALAD	\$15.0
SIDE SALAD	\$5.0
THE GOAT	

Side Dishes

HONEY BISCUITS	\$5.0
FRIES	\$6.0
HOUSE-MADE POTATOES	\$5.0
SWEET POTATO FRIES	\$5.0
TURKEY SAUSAGE	\$5.0

Ingredients Used

	BACON	\$6.3
	HAM	\$5.0
	CHICKEN BREAST	\$7.0
POTATOES		
BUTTER		
TOMATOES		
HONEY		
RASPBERRY		
FETA		
BEEF		
CORNERED BEEF		
BISCUIT		
AVOCADO		
PEPPERMINT		
NUTELLA		

Honey Biscuit Breakfast Lunch Menu



Honey Biscuit Breakfast Lunch

106 W Northwest Hwy, Mount
Prospect, IL 60056, United States

Opening Hours:

Sunday 07:00-15:00
Monday 07:00-15:00
Tuesday 07:00-15:00
Wednesday 07:00-15:00
Thursday 07:00-15:00
Friday 07:00-15:00
Saturday 07:00-15:00

Made with [Menu](#)

