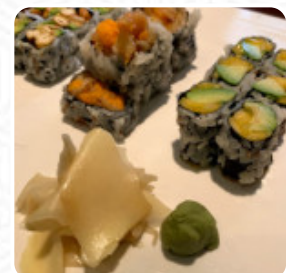




<https://menuweb.menu>

3505 Johnson Ave, The Bronx, United States

+17185438833,+17185433590 - <https://www.palaceofjapan.com/>



The menu of Palace Of Japan from The Bronx comprises about **192** different courses and drinks. On average you pay about \$10.0 for a dish / drink. Palace of Japan, located in the Bronx, NY, is an inviting Asian restaurant boasting an impressive average rating of 3.9 stars. Whether you're curious about the ambiance or the menu, you can check out reviews from fellow diners. Open today from 11:30 AM to 10:30 PM, it's the perfect time to indulge in authentic flavors. To ensure a seamless dining experience, don't hesitate to call ahead and reserve your table at (718) 543-8833. If you love the menu here but want to explore more options, be sure to check out Fresco Tortillas and Hunan Balcony. Have you dined with us before? We'd love to hear your thoughts—leave a review!.

Palace Of Japan Menu



Sashimi

TUNA TARTAR \$7.0

Maki

CHICKEN TEMPURA \$14.0

Side Dishes

RICE

Sushi Nigiri

INARI \$1.9

Rice

WHITE OR BROWN RICE \$1.8

Chicken

CHICKEN KATSU \$14.0

Fish

SMOKED SALMON \$2.8

Specialties

KING CRAB \$6.0

From The Grill

BEEF CHICKEN HIBACHI \$17.0

Fish & Seafood

MISO SALMON \$17.0

Sushi Specials

RIVERDALE ROLL \$10.5

Beer

ORION

Rindfleisch Gerichte

BEEF SUKIYAKI \$18.0

Makimono

TUNA WITH AVOCADO ROLL \$5.3

Sushi Catering

MIRUGAI

Rice And Noodles

UNA JYU

Teriyaki

TUNA TERIYAKI \$16.0

Sushi Party

SUSHI PARTY \$42.0

Main Courses - Teriyaki

BEEF TERIYAKI \$21.0

Suppe & Vorspeisen

HIJIKI \$5.0

Sushi Roll

NEMO ROLL \$13.0

Beverages & Desserts

HOMEMADE FRESH VEGETABLES
FRUIT JUICE (OR MIXED JUICE) \$4.5

Palace Of Japan Menu



Tea

ZEN \$7.5

Seafood Dishes

FRIED CALAMARI \$8.0

Vegetarian Appetizers

SAUTÉED BROCCOLI WITH GARLIC \$6.0

Sushi Or Sashimi A La Carte

SUPER WHITE TUNA \$2.8

Chef's Special Rolls

DANCING EEL ROLL \$12.5

Snacks And Sides

COLESLAW

Asian

GYOZA \$5.5

Cold Appetizer

SUNOMONO \$7.5

Sushi Entree

SUSHI SASHIMI COMBO \$23.0

Nabemono

SEAFOOD YOSENABE \$15.0

Sushi Bar Entrees

TRIPLE SUSHI \$22.0

Roll Or Hand Roll

SALMON SKIN ROL \$5.5

Raw

BEAUTY BEAST ROLL \$12.0

Sushi Bar Entree

SASHIMI PARTY \$52.0

Soft Drink

SODA, SPRING WATER \$1.5

Martinis

STRAWBERRY COSMO

Sushi Bar Appetizers

IITAKO (BABY OCTOPUS) \$7.0

Seafood Appetizers

SHRIMP KUSHIYAKI \$8.0

Vegetable Appetizers

VEGETABLE GYOAZA \$5.0

Sushi Lunches

ROLL COMBO \$13.0

Rolls & Hand Rolls

YELLOWTAIL WITH JALAPEÑO ROLL \$6.8

Intoxicating Cocktails

MALIBU BAY BREEZE

Palace Of Japan Menu



Maki Or Temaki

EEL WITH AVOCADO OR CUCUMBER ROLL \$6.0

Hibachi Entrees

SHRIMP SCALLOP HIBACHI \$22.0

Forbidden City Sushi Rolls

HIDDEN DRAGON ROLL \$12.5

Maki & Hand Rolls

SWEET POTATO TEMPURA ROLL \$6.0

Sushi And Sashimi Entree

SUSHI SASHIMI PARTY \$52.0

Appetizers - From Kitchen

HARUMAKI (2 PCS) \$4.0

Signature Maki Sushi

BLACK PEARL MAKI \$15.0

Stone Lunch Special

HAND ROLL COMBO \$18.0

Palace Special Roll

PALACE ROLL \$7.0

Japanese Teppanyaki

CHICKEN HIBACHI \$14.0

Sushi & Sashimi

ROLL PARTY \$34.0

Inside Out Rolls - Sushi

TUNA ROLL \$4.3

Roll / Hand Roll

JB ROLL

Mito Signature Sushi Rolls

MR. CRAB ROLL \$8.0

Popular Roll

YELLOWTAIL WITH SCALLION ROLL \$5.8

Sides

SWEET POTATO

Signature Seafood Dishes

KING OF THE SEA \$23.0

Rolls Or Hand Roll

CASHEW NUT WITH AVOCADO ROLL \$4.8

A-La-Carte Nigiri/Sashimi (2Pc Per Order)

SURF CLAM \$2.0

Featured Dishes - Meals

CHILEAN SEABASS \$13.0

Palace Of Japan Menu



Luncheon Specials - Twist On Thai "Lite"

SATAY CHICKEN OR BEEF \$6.0

Chinese Food - House Special

HOUSE FILLET MIGNON \$24.0

Rolls Or Hand Rolls A La Carte

SHRIMP WITH AVOCADO OR
CUCUMBER ROLL \$5.0

Dessert, Drinks Or Sides

WASABI (1 OZ) \$1.0

Asian Tapas | Variations

BEEF SATAY \$17.0

Warm Appetizers (Thai)

SEAFOOD TEMPURA \$26.0

Rice Bowl With Toppings

CHIRASHI SUSHI \$22.0

Sushi & Sashimi - Entree

SPICY ROLL COMBO \$15.5

Extras

SUSHI RICE \$2.0

GINGER (3 OZ.

Seafood

SHRIMP TEMPURA \$8.5

OCTOPUS AND ORZO \$2.5

Starters

CHILEAN SEABASS TERIYAKI \$23.0

TILAPIA TERIYAKI \$15.0

Cocktails

PASSIONFRUIT SANGRIA

CAPTAIN LEVI

Side Order

SPICY MAY SAUCE (3 OZ) \$2.0

GINGER DRESSING (3 OZ PR PINT) \$1.5

Soup & Salad

SEAWEED SALAD WITH MANGO \$6.0

HAMAGURI SOUP \$5.0

Popular Items

CRAB SHUMAI \$5.0

BEN ROLL (SHRIMP TEMPURA
ROLL) \$8.0

Sushi Or Sashimi

FLYING FISH ROE \$2.5

SALMON ROE \$4.0

Special Roll Menu

NORTH ROLL \$9.0

SOUTH ROLL \$7.0

Palace Of Japan Menu



Japanese Sushi Entrees

COOKED ROLL PLATTER	\$15.0
PALACE ROLL PLATTER	\$18.0

Japanese Sushi Bar Entrees

SUSHI DINNER	\$20.0
SASHIMI DINNER	\$22.0

Salad

AVOCADO MANGO SALAD	\$6.5
KIMO GREEN COLAR CHI	\$5.5
SPICY CRAB MEAT SALAD	\$7.0

Sushi



CALIFORNIA ROLL	\$5.0
SPICY WHITE TUNA ROLL	\$7.3
ALASKAN ROLL	\$5.8

Appetizer

TATSUTA AGE	\$5.0
BEEF NEGIMAKI	\$9.0
TEMPURA	

Dessert

EGG CUSTARD	\$1.8
TEMPURA ICE CREAM	\$4.0
MOCHI ICE CREAM	\$4.0

Rolls

I LOVE LUCY ROLL	\$9.0
SPICY SALMON ROLL	\$6.3

SPICY HAPPY ROLL	\$6.5
------------------	-------

Japanese Specialties

VEGETABLE TEMPURA	\$6.0
YAKITORI	\$5.5
MISO SOUP	\$2.5

Appetizer From Kitchen

OSHITASHI	\$5.0
WASABI SHUMAI	\$5.5
HAMACHI KAMA	\$11.0

Sushi & Sashimi A La Carte

FLUKE	\$2.8
CRAB STICK	\$2.0
FATTY TUNA	

Sushi And Sashimi A La Carte

STRIPED BASS	\$2.5
SPANISH MACKEREL	\$2.0
SEA URCHIN	\$6.0

Sushi Dishes

FOUR STARS SUSHI	\$24.0
VEGETABLE FAVORITE #1	\$13.0
VEGETABLE FAVORITE #2	\$14.0

Restaurant Category

DESSERT
VEGETARIAN
VEGAN

Palace Of Japan Menu



Entree - Vegetables & Noodle Entree

NABE YAKI UDON OR TEMPURA UDON	\$14.0
PAD THAI, UDON OR SOBA	\$11.0
CHA HAN (JAPANESE FRIED RICE)	\$9.5

Salads

GARDEN SALAD	\$3.5
SETH SALAD	\$11.0
BLACK PEPPER TUNA SALAD	\$11.0
SEAFOOD SALAD	\$10.0

Soups

RED DYNAMITE	\$11.0
CLEAR SOUP	\$2.5
SEAFOOD SOUP	\$9.0
VEGETABLE TOFU SOUP	\$5.0
HOT SOBA SOUP	\$5.0

Sushi Rolls

CUCUMBER ROLL	\$3.0
CROUCHING TIGER ROLL	\$12.0
SPIDER ROLL	\$12.5
SEXY ROLL	\$12.5
SUSHI	
FUTO MAKI - BIG ROLL	

A La Carte Or Hand Roll

SPICY TUNA ROLL OR FASHION ROLL	\$6.3
FRESH SALMON WITH AVOCADO SCALLION ROLL	\$5.3

SMOKED SALMON WITH AVOCADO SCALLION ROLL	\$5.8
SPICY CRAB MEAT ROLL OR FASHION ROLL	\$6.0
GARDEN ROLL (BIG ROLL)	\$5.3
MANGO OR AVOCADO ROLL	\$4.8

Entrées

AGEDASHI TOFU	\$5.5
NASU NO SHIGIYAKI	\$5.0
ROCK SHRIMP	\$9.0
MISO CHILEAN SEABASS	\$23.0
SATAY CHICKEN	\$14.0
MAKI MAKI CHICKEN	\$14.0
BBQ SQUID	

These Types Of Dishes Are Being Served

SALMON TERIYAKI	\$17.0
ICE CREAM	\$3.0
SOUP	
SALAD	
NOODLES	
FISH	
DESSERTS	

Special Rolls

	YELLOWTAIL JALAPEÑO	\$10.0
	KING KONG ROLL	\$10.0
	SPICY GIRL ROLL	\$9.5
	BEN ROLL (SHRIMP TEMPURA ROL	\$12.5
	JOHNSON AVENUE ROLL	\$9.0

Palace Of Japan Menu



GREEN DRAGON ROLL	\$11.5	SHRIMP	\$2.0
PHILADELPHIA ROLL (JJ ROLL)	\$5.8	MACKEREL	\$2.0
FLYING FIRE DRAGON MAKI	\$16.0	EEL	\$3.0
BUTTERFLY DREAMING MAKI	\$15.0	SCALLOP	
		VEGETABLES	

Ingredients Used



EDAMAME	\$5.0	SHRIMP
SOFT SHELL CRAB		EGG
CHICKEN TERIYAKI	\$14.0	MANGO
TUNA	\$2.8	SEAFOOD
YELLOWTAIL	\$3.0	LYCHEE
SALMON	\$2.8	VEGETABLES

Palace Of Japan

3505 Johnson Ave, The Bronx,
United States

Opening Hours:
Monday 11:30-20:40
Tuesday 11:30-20:40
Wednesday 11:30-20:40
Thursday 11:00-20:40
Friday 11:30-21:40
Saturday 12:30-21:40
Sunday 12:30-21:40

Made with [Menu](#)

