



## Red Lobster Menu

<https://menuweb.menu>

1600 ParkwayTN 378622849, Sevierville, United States

+18657747077 - <http://www.redlobster.com/>



The restaurant from Sevierville offers **218** different **dishes and drinks on [the menu](https://menuweb.menu)** at an average price of \$18.6. Red Lobster invites you to experience **PRIORITY SEATING** to minimize your wait time in our restaurant, allowing you to maximize your enjoyment. Alternatively, relax at our bar and indulge in a Tasting Plate while you await your table. Our renowned seafood restaurant prides itself on serving top-quality, freshly-prepared seafood that is sourced in a sustainable, traceable, and responsible manner. Join us for lunch or dinner and savor signature dishes such as the Ultimate Feast, Garlic Shrimp Scampi, and Parrot Isle Jumbo Coconut Shrimp. Don't miss out on our seasonal specials like Lobsterfest, Crabfest, and Endless Shrimp. And of course, who can resist our mouthwatering Cheddar Bay Biscuits? Explore more at [www.redlobster.com](http://www.redlobster.com).

# Benihana Menu



## Soups

TONKOTSU RAMEN \$14.7

## Extras

GINGER DRESSING 1 PINT \$6.6

## Drinks

DRINKS

## A La Carte

CHICKEN A LA CARTE \$15.4

## Appetizer

SASHIMI SAMPLER \$13.2

## Beef Dishes

FILET MIGNON

## Rolls

SPICY SALMON ROLL \$13.7

## Starters

HIBACHI CHICKEN \$32.9

## Soft Drinks

SUGAR FREE RED BULL \$5.2

## Main Course

CHIRASHI SUSHI\* \$31.6

## Kids

KIDS EDAMAME \$8.8

## Appetizers

VEGETABLE ROLL \$9.2

## Sushi Combinations

NIGIRI ASSORTMENT\* \$32.7

## Milkshakes

STRAWBERRY MILKSHAKE \$9.3

## Sushi Kombination

SUSHI FOR 4 \$76.0

## Fried Rice

FRIED RICE

## House Specials

SPICY SHRIMP

## Hot Drinks

TEA

## Entree

TERIYAKI STEAK\* \$38.4

## Large Plates

TUNA POKE \$13.7

## Stir-Fried Noodles

CHICKEN YAKISOBA \$20.6

## Steaks & Chops

HIBACHI STEAK \$24.2

# Benihana Menu



## A La Carte Sushi And Sashimi

EGG TAMAGO

## Combination Special

CHICKEN SHRIMP

## Sashimi & Sushi

SUSHI SASHIMI COMBINATION \$35.0

## From The Sushi Bar

SUSHI FOR 2 \$38.0

## Nigiri & Sashimi

ALBACORE TUNA\*

## Combinations

STEAK\* SHRIMP

## Non-Alcoholic Beverages

GRAPE RAMUNE \$5.8

## Noodle & Rice

HIBACHI CHICKEN RICE \$6.2

## Just For Kids

KIDS CHICKEN TENDERS \$20.8

## Starters & Side Dishes

SPICY EDAMAME \$9.7

## Traditional Dinners

HIBACHI STEAK\* \$38.4

## Mochi Ice Cream

STRAWBERRY MOCHI ICE CREAM \$9.0

## Appetizer From Sushi Bar

TUNA TATAKI \$16.0

## Soul In The Bowl

BENIHANA ONION SOUP \$6.5

## Keto

SASHIMI\* SAMPLER \$17.7

## Hibachi Entrees

HIBACHI COLOSSAL SHRIMP \$41.6

## Hibachi Combinations

HIBACHI SUPREME \$65.4

## Aged Steaks & Chops

FILET MIGNON \$41.4

## Nigiri Sashimi

SNAPPER\*

## Sushi Assortment

SASHIMI ASSORTMENT\* \$40.8

## Japanese Cuisine

SHRIMP YAKISOBA \$31.7

## Japanese Rolls & Entrees

SHRIMP CRUNCHY ROLL \$14.4

# Benihana Menu



## A-La-Carta

STEAK A LA CARTE \$21.8

## Sides

GARLIC BUTTER

## Benihana Favorites

BENIHANA LEMONADE 1/2 GALLON

## Specialties\*

SUSHI COMBINATION \$22.9

## Benihana "Traditional" Dinners

SEAFOOD DIABLO \$36.9

## Noodle And Tofu

SPICY TOFU STEAK \$28.1

## Rice Creams \$4

STRAWBERRY MOCHI \$9.0

## Restaurant Category

DESSERT

## Hibachi Dinner Entrée - Traditional

HIBACHI SHRIMP \$38.3

## Specialty Roll Sushi (8 Pcs/Order)

EEL ROLL \$12.4

## Uncategorized

ACQUA PANNA NATURAL SPRING WATER \$5.5

## Non Alcoholic Drinks

SAN PELLEGRINO \$5.5

RED BULL \$5.2

## Fish

SMOKED SALMON

SALMON ROLL \$8.9

## Dessert

MOUNT FUJI CHOCOLATE CAKE \$9.6

MOUNT FUJI CHOCOLATE CAKE FOR 4 \$37.6

## Ramen

SPICY CHILI GARLIC RAMEN \$18.2

CHASHU RAMEN \$20.5

## Special Rolls

LAS VEGAS ROLL DEEP FRIED \$13.2

LOBSTER ROLL \$29.2

## Sauce

GINGER SAUCE 1 PINT \$6.6

TERIYAKI SAUCE 1 PINT \$7.9

## Specialty Rolls

CHILI SHRIMP ROLL \$19.0

SHRIMP LOVERS ROLL \$17.3

# Benihana Menu



## Lunch Entrées

BEEF JULIENNE	\$23.5
HIBACHI SHRIMP YAKISOBA	\$21.0

## Shareables

CHILI PONZU YELLOWTAIL*	\$17.5
CRISPY SPICY RICE	

## Hibachi Dinner

FILET MIGNON SCALLOPS	
STEAK YAKISOBA	\$21.0

## Soda (Canned)

STRAWBERRY RAMUNE	\$5.8
ORIGINAL RAMUNE	\$5.8

## Sushi And Sashimi A La Carte

SHRIMP À LA CARTE	\$21.9
SALMON A LA CARTE	\$18.2

## Kids Hibachi

KIDS HIBACHI SHRIMP	\$21.1
KIDS HIBACHI CHICKEN	\$20.3


## Steak And Chicken

SPICY HIBACHI CHICKEN	\$21.2
HIBACHI CHATEAUBRIAND*	\$50.3

## Specialties Dinners

BENIHANA DELIGHT	\$44.5
BENIHANA SPECIAL	\$56.6


## Salads

	BENIHANA SALAD	\$6.1
	SEAWEED SALAD	\$8.4
	SUSHI SAMPLER	\$13.2

## Sushi

SPICY TUNA ROLL	\$13.7
CALIFORNIA ROLL	
ALASKAN ROLL	\$17.3

## Japanese Specialties

	MISO SOUP	\$6.8
	VEGETABLE TEMPURA	\$11.4
	TERIYAKI CHICKEN	\$33.5

## Breast Cancer Awareness

PINK RIBBON ROLL	\$14.8
PINK RIBBON ROLL PLATER	\$56.3
PINK KIMONO LEMONADE 1/2 GALLON	\$10.0

## Sushi Nigiri

YELLOWTAIL
TUNA
SMELT ROE*
SALMON ROE*

## These Types Of Dishes Are Being Served

ICE CREAM
SOUP
TUNA STEAK
LOBSTER



# Benihana Menu



## Beverages

PEPSI CAN	\$2.4
MOUNTAIN DEW CAN	\$2.4
MIST TWIST CAN	\$2.4
DIET PEPSI CAN	\$2.4
TROPICAL RED BULL	\$5.2

## Mugs

DRAGON MUG	\$7.0
KENDO MUG	\$7.0
SAKURA MUG	\$7.0
NINJA MUG	\$7.0
KOI MUG	\$7.0

## Entrées

TOKYO WINGS	\$16.7
SHRIMP SAUTÉ	\$15.2
HIBACHI SCALLOPS	\$23.8
PAN FRIED PORK GYOZA DUMPLINGS	\$10.9
HIBACHI SHORT RIBS	\$19.6
SPICY CHICKEN GYOZA DUMPLINGS	\$10.9

## Benihana Family Meals

STEAK* CHICKEN	
SPICY SHRIMP FILET MIGNON	
TOKYO WINGS FOR 2	
TOKYO WINGS FOR 4	
TOKYO WINGS FOR 6	
SUSHI FOR 6	\$114.0

## Specialty Sushi & Rolls



SUMO ROLL BAKED	\$18.7
SALMON* ROLL	\$11.4
TUNA* ROLL	\$11.4
YELLOWTAIL* ROLL	\$11.4
SPICY LOTUS TEMPURA ROLL	\$18.3
NEW KATANA ROLL	\$16.1

## Sushi Rolls

CUCUMBER ROLL	\$7.6
PHILADELPHIA ROLL	\$11.4
YELLOWTAIL ROLL	\$8.9
DRAGON ROLL	\$20.1
RAINBOW ROLL	\$19.5
SPIDER ROLL	\$19.5
SHRIMP TEMPURA ROLL	\$14.3

## Specialties

BENIHANA TRIO	\$55.6
SPLASH 'N MEADOW	\$47.0
DELUXE TREAT	\$57.9
ROCKY'S CHOICE	\$44.0
EMPEROR'S FEAST	\$47.4
LAND 'N SEA	\$52.2
BENIHANA EXCELLENCE	\$45.0

## Signature Sauces

BENIHANA ORIGINAL GARLIC SAUCE 1 PINT	\$8.1
MUSTARD SAUCE 1 PINT	\$6.6
BENIHANA HOT SAUCE	\$6.6
SPICY MAYO 1 OZ.	\$0.7
SPICY TERIYAKI SAUCE 1OZ.	\$0.7

# Benihana Menu

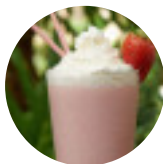


DIABLO SAUCE 1 OZ.	\$0.7
EEL SAUCE 1 OZ.	\$0.7

## Ingredients Used

EDAMAME	\$8.8
SHRIMP	
EEL	
EGG	
MISO	
GARLIC	
BUTTER	

## Beverage

	BENIHANA STRAWBERRY MILKSHAKE 16OZ	\$9.3
	BENIHANA COOKIES CREAM MILKSHAKE 16OZ	\$9.3
	BENIHANA STRAWBERRY LEMONADE 16OZ	\$5.8
	BENIHANA MANGO LEMONADE 16OZ	\$5.8
	BENIHANA PASSION FRUIT LEMONADE 16OZ	\$5.8
	MANGO COLADA SMOOTHIE 16OZ	\$9.3
	STRAWBERRY PASSION FRUIT DELIGHT SMOOTHIE 16OZ	\$9.3
	BANANA BERRY SMOOTHIE 16OZ	\$9.3

## Popular Items

	HIBACHI CHICKEN RICE (SERVES 2)	\$14.2
	HIBACHI CHICKEN RICE (SERVES 1)	\$7.1
	VEGETABLE FRIED RICE (SERVES 1)	\$5.9

HIBACHI CHICKEN RICE (SERVES 4)	\$28.4
LUNCH DUET	\$26.3
HIBACHI SHRIMP RICE (SERVES 2)	\$16.4
HIBACHI STEAK* RICE (SERVES 2)	\$16.4
HIBACHI SHRIMP RICE (SERVES 1)	\$8.2

## Gluten Sensitive

	SPICY HIBACHI CHICKEN RICE	\$6.8
	SHRIMP NIGIRI SASHIMI	
	ALBACORE NIGIRI SASHIMI	
	SNAPPER NIGIRI SASHIMI	
	OCTOPUS NIGIRI SASHIMI	
	SALMON NIGIRI SASHIMI	
	TUNA NIGIRI SASHIMI	
	YELLOWTAIL NIGIRI SASHIMI	

## Seafood

	SHRIMP TEMPURA	\$14.8
	TWIN LOBSTER TAILS	\$60.9
	OCEAN TREASURE	\$59.7
	SURF SIDE	\$48.0
	HIBACHI SALMON WITH AVOCADO TARTAR SAUCE	\$38.5
	SPICY HIBACHI SHRIMP	\$38.9
	HIBACHI TUNA STEAK	\$38.5
	SALMON	
	OCTOPUS AND ORZO	
	LOBSTER TAIL	

## Kabuki Kids

KIDS FILET MIGNON*	\$25.1
--------------------	--------

# Benihana Menu



KIDS COMBINATION  
STEAK\* SHRIMP \$25.1

KIDS HIBACHI STEAK\* \$21.9

KIDS COMBINATION  
CHICKEN SHRIMP \$24.0

KIDS COMBINATION CHICKEN  
STEAK\* \$24.6

KIDS CHICKEN TEMPURA \$20.8

KIDS FILET MIGNON\* CHICKEN \$27.5

KIDS SIDE NOODLES \$6.4

KIDS CALIFORNIA† ROLL \$17.7

KIDS HIBACHI CHICKEN RICE \$7.1

KIDS FILET MIGNON\* SHRIMP \$28.0

BENI NINJA MUG \$7.0

SENSEI MUG \$7.0

HIBACHI STEAK\* RICE (SERVES 4) \$32.8

SPICY HIBACHI CHICKEN RICE  
(SERVES 4) \$30.8

SPICY HIBACHI CHICKEN RICE  
(SERVES 2) \$15.4

VEGETABLE FRIED RICE (SERVES  
4) \$23.6

VEGETABLE FRIED RICE (SERVES  
2) \$11.8

STEAMED RICE (SERVES 2) \$5.9

HIBACHI STEAK\* RICE (SERVES 1) \$8.2

SPICY CHICKEN RICE (SERVES 1) \$7.7

NEW SPICY HIBACHI STEAK RICE  
(SERVES 1) \$8.7

NEW SPICY HIBACHI STEAK RICE  
(SERVES 2) \$17.4

NEW SPICY HIBACHI STEAK RICE  
(SERVES 4) \$34.8

NEW SPICY HIBACHI SHRIMP RICE  
(SERVES 1) \$8.7

NEW SPICY HIBACHI SHRIMP RICE  
(SERVES 2) \$17.4

NEW SPICY HIBACHI SHRIMP RICE  
(SERVES 4) \$34.8

## Signature Hibachi Fried Rice



HIBACHI SHRIMP RICE  
(SERVES 4) \$32.8

## Benihana

16226 Ventura Blvd.CA  
91436, Encino, United  
States

### Opening Hours:

Saturday 11:00-23:00

Sunday 11:00-23:00

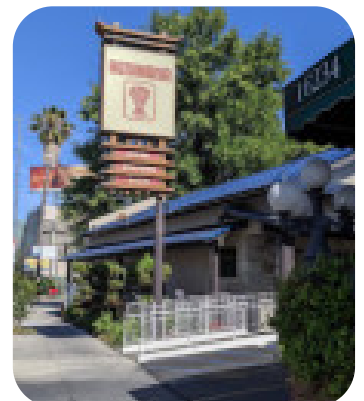
Monday 11:00-15:00 15:00-22:00 16:00-  
19:00

Tuesday 11:00-15:00 15:00-22:00 16:00-  
19:00

Wednesday 11:00-15:00 15:00-22:00  
16:00-19:00

Thursday 11:00-15:00 15:00-22:00 16:00-  
19:00

Friday 11:00-15:00 15:00-23:00 16:00-  
19:00



Made with [menuweb.menu](https://menuweb.menu)