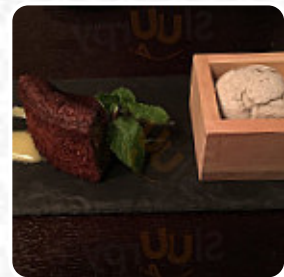
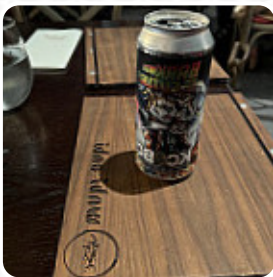




## Wabi Sabi Menu

<https://menuweb.menu>

407 Broad Street, Bloomfield, 07003, United States Of America  
+19736809222 - <http://wabisabinj.com>



The restaurant from [Bloomfield](#) offers **230** different **menus and drinks on [the menu](#)** for an average price of \$14.1. Nestled in an unassuming locale, Wabi Sabi presents itself as a top-tier destination for sushi and Japanese cuisine. Diners rave about the fresh, expertly crafted dishes, including highlights like the tangy mango panna cotta and the perfectly cooked seafood fried rice. The attentive service enhances the experience, with friendly staff ensuring a personalized touch. The ambiance is cozy and inviting, making it ideal for both casual meals and special occasions. Whether you're a local or just passing through, Wabi Sabi is a must-visit for an unforgettable dining experience that rivals the best in New York City.

# Wabi Sabi Menu



## Desserts

CHOCOLATE CAKE

## Non Alcoholic Drinks

PINK LADY \$14.0

## Specials

SHRIMP GYOZA \$6.5

## Antipasti

GRILLED SQUID \$13.5

## Salad

KANI SALAD \$9.5

## Extras

SUSHI RICE \$2.5

## Gnocchi

GNOCCHI

## Sandwiches

SHRIMP LOBSTER ROLL \$13.5

## Main Dishes

SEAFOOD UDON SOUP \$17.5

## Drinks

DRINKS

## Rice

RISOTTO

## Antipasti - Starters

CARPACCIO

## Carpaccio

SALMON CARPACCIO \$15.0

## From The Grill

AIRLINE CHICKEN \$19.0

## Indian

CHICKEN CURRY

## Maki Sushi

DYNAMITE ROLL \$15.0

## Inside Out

CRUNCH ROLL \$14.5

## Ramen

VEGETABLE RAMEN \$12.5

## Tartar

SALMON TARTAR \$15.0

## Rice Dishes

CHICKEN FRIED RICE \$13.5

## Main Course

LAMB CHOP \$32.0

## Makimono

RAGING BULL \$15.0

# Wabi Sabi Menu



## Sushi Platten

SUSHI FOR TWO \$55.0

## Hot Appetizers

BERKSHIRE PORK GYOZA \$8.5

## Rice Bowl

EEL DON \$25.0

## Inside-Out-Maki

BOSTON ROLL \$6.5

## Japanese Noodle Soups

TERIYAKI CHICKEN UDON \$13.0

## Noodle

RAMEN

## Special Noodles

UDON

## Bellissima Pasta

ANGUS STEAK \$14.5

## Café

TUNA AVOCADO SALAD \$15.0

## Tea

GREEN TEA

## Noodles & Fried Rice

EEL FRIED RICE \$28.0

## Cold Dishes

KURO EDAMAME \$8.5

## Vegetable Dishes

COLD TOFU \$10.0

## Soup & Salads

SPICY SEAFOOD MISO SOUP \$8.5

## Small Plates

SCALLOP CARPACCIO \$23.0

## Soup And Salad

SPICY SEAWEEED SALAD \$6.0

## Noodles In Soup

TONKATSU RAMEN SOUP \$14.5

## Sushi Or Sashimi A La Carte

SUPER WHITE TUNA \$3.5

## Specialty Rolls

GODZILLA ROLL \$14.0

## Sashimi Selection

SALMON SASHIMI

## Chef's Special Roll

METEOR ROLL \$14.0

## Maki & Temaki

SPICY YELLOWTAIL ROLL \$7.5

# Wabi Sabi Menu



## Sushi Dinner

SUSHI SASHIMI DELUXE \$32.0

## Bento Boxes

WABISABI FRIED CHICKEN \$12.0

## Sushi Bar Special Entrée

SPICY MAKI COMBO \$21.0

## Sushi Or Sashimi

WHITE TUNA

## Roll And Hand Roll

JAZZ ROLL \$9.0

## Signature Dish

SEARED TUNA TATAKI \$16.0

## Sushi & Sashimi Plates

SASHIMI COMBO \$15.5

## Soups, Noodles & Rice

SPICY MISO SOUP \$3.5

## French

FOIE GRAS

## Rolls And Hand Rolls

SPICY CRUNCHY SALMON ROLL \$7.5

## Sushi Boat

SASHIMI FOR TWO \$58.0

## Our Mocktails

ORANGE BLOSSOM \$15.0

## Off The Menu-Special Menu

TUNA MADNESS \$28.0

## Sushi Roll And Hand Roll

NEW YORK ROLL \$13.5

## Combination Dinner Box

SUSHI AND SASHIMI \$16.0

## Salmon Dishes

TERIYAKI SALMON \$14.5

## Sides

SWEET POTATO

## Chinmi

WASABI OCTOPUS \$10.0

## Bi-weekly 50% & up off items

TEMPURA SHRIMP UDON SOUP \$14.5

## Omakase Entrees && A La Carte Sushi&Comma; Sashimi

SUSHI SASHIMI FOR TWO \$62.0

# Wabi Sabi Menu



## Roly's Favorites

MISO GLAZED SEABASS \$29.0

## MIỀN NAM – SÜD VIETNAM –VIETNAM

SEAFOOD CRISPY FRIED RICE \$18.0

## Shiromi

GOLDENEYE SNAPPER \$28.0

## A-La-Carte Nigiri/Sashimi (2Pc Per Order)

SWEET SHRIMP \$4.0

## Sushi, Sashimi And Tempura Combinations

MAKI COMBO \$13.0

## Soups / Tempura / Fries

CREAM OF EDAMAME \$7.5

## Tempura/ Fries

SHRIMP VEG.TEMPURA \$15.0

## Flamed Rolls

KAMIKAZE ROLL \$14.5

## Rice Bowl With Toppings

CHIRASHI SUSHI \$13.0

## Special Breaded Sushi

ALASKA ROLL \$6.5

## Asian - Curries

TERIYAKI TOFU \$11.0

## Soup, Salad, And Chili

SALMON SKIN SALAD \$8.0

## Uncategorized

SASHIMI SALAD \$15.5

## Sashimi

SASHIMI DELUXE \$30.0

SASHIMI SALMON

## Donburi

TUNA DON \$13.0

SALMON DON \$13.0

## Starters & Salads

FRENCH FRIES \$5.5

FRENCH FRIES

## Appetizer

SHRIMP SHUMAI \$6.0

TEMPURA

## Fried Rice

SHRIMP FRIED RICE \$16.0

FRIED RICE

## Signature Rolls

SUPER WHITE TUNA ROLL \$6.5

VOLCANO ROLL \$12.0



# Wabi Sabi Menu



## Hot Drinks

COFFEE

TEA

## Asian

WONTON SOUP

GYOZA

## Sushi And Sashimi Combo

D.I.Y. SUSHI \$22.0

WABI SABI SIGNATURE \$80.0

## Hot Tasting

FRIED SPICY ROCK SHRIMP \$10.0

PORK PEANUT BUTTER DUMPLING \$7.5

## Rolls & Hand Rolls

EEL AVOCADO EEL CUCUMBER ROLL \$8.5

SHRIMP TEMPURA CURRY ROLL \$9.5

## Appertizer(Sushi)

SASHIMI APP \$15.0

SUSHI APP \$12.0

## Restaurant Category

FRENCH

ITALIAN

## Soups

ROASTED DUCK \$15.0

CLEAR SOUP \$3.0

CLAM SAKA SOUP \$7.5

## Side Dishes



TRUFFLE FRIES \$8.5

SWEET POTATO FRIES \$5.5

RICE

## Fish

SMOKED SALMON \$4.0

SEA BASS

SALMON ROLL \$6.5

## Kitchen Entrees

HOT STONE ANGUS STEAK \$28.0

ROASTED DUCK CONFIT \$27.0

SEAFOOD UNI PASTA \$32.0

## Sushi

SUSHI COMBO \$13.0

CALIFORNIA ROLL \$6.5

SPICY TUNA ROLL \$6.5

SASHIMI

## Sushi Bar Entrees

SUSHI REGULAR \$21.0

SUSHI DELUXE \$28.0

SALMON LOVER \$28.0

TRIPLE SUSHI \$25.0

## Salads

HOUSE SALAD \$4.0

SEAWEED SALAD \$5.5

# Wabi Sabi Menu



YUZU CAESAR SALAD	\$9.5
KINGCRAB AVOCADO SALAD	\$17.0
SALMON AVOCADO SALAD	\$15.0

## Seafood

TERIYAKI SHRIMP	\$14.5
SHRIMP TEMPURA	\$15.0
GRILLED OCTOPUS	\$17.5
OCTOPUS AND ORZO	
CALAMARI	

## Starters

SMOKED DUCK BREAST	\$12.5
SEARED FOIE GRAS	\$19.5
PAN SEARED SALMON	\$25.0
PAN SEARED SCALLOP	\$29.0
MUSHROOM RISOTTO	

## Japanese Specialties

TERIYAKI CHICKEN	\$12.0
MISO SOUP	\$2.5
VEGETABLE TEMPURA	\$10.0
YAKITORI	
BENTO	

## Sushi Menu

UNAGI/ EEL	\$6.0
KANIKAMA/ CRAB STK	\$3.5
HOTATEGAI/ SCALLOP	\$7.0
TOBIKO/ FLYINGFISH ROE	\$3.5
TAMAGO/ SWEET EGG	\$3.5
BOTAN SHRIMP W/ HEAD	\$9.0

## Sushi And Sashimi A La Carte

MAGURO/ TUNA	\$4.0
SAKE/ SALMON	\$4.0
HAMACHI/ YELLOWTAIL	\$5.0
EBI/ SHRIMP	\$3.5
IKURA/ SALMON ROE	\$5.0
TAKO/ OCTOPUS	\$4.0

## Noodle Bar

KAKI UDON SOUP	\$8.5
TEMPURA SHRIMP CURRY UDON	\$13.5
TERIYAKI SHRIMP UDON	\$15.0
PORK SOYA RAMEN SOUP	\$14.0
ROASTED DUCK MISO RAMEN SOUP	\$15.0
UNI BONE MARROW RAMEN	\$28.0

## Entrées

	SUNRISE ROLL	\$15.0
	WILD MUSHROOM SOUP	\$7.0
	FRIED TOFU	\$6.5
	HAMACHI YUZU	\$16.0
	GRILLED AVOCADO	\$5.0
	SQUID	
	SHUMAI	

## Sushi Rolls

PHILADELPHIA ROLL	\$6.5
RAINBOW ROLL	\$12.0
SHRIMP TEMPURA ROLL	\$9.5
SPIDER ROLL	\$12.0

# Wabi Sabi Menu



YELLOWTAIL ROLL	\$6.5
SUSHI	
DRAGON ROLL	

## Special Rolls

	TUNA AVOCADO ROLL	\$6.5
	BLACK DRAGON ROLL	\$15.0
	PRI PRI ROLL	\$14.5
	CHEF'S MAKI	\$14.0
	BOB'S ROLL	\$15.0
	SPICY RED HEART	\$16.0
	GREEN DRAGON ROLL	\$12.0
	DIRTY ROLL	\$16.0
	WABISABI ROLL	\$16.0
	SEARED SALMON	\$15.0

## These Types Of Dishes Are Being Served

	SANDWICH	\$13.5
	ICE CREAM	\$4.5
	FISH	

- DESSERTS
- SOUP
- CHICKEN
- TUNA STEAK
- MEAT
- OYSTERS
- SALAD

## Dessert

MANGO MOUSSE	\$7.5
CHEESE CAKE BRULEE	\$8.5

	RUM VANILLA BEAN PANNA COTTA	\$8.5
	COCONUT CREME BRULEE	\$8.5

- CARAMEL PUDDING
- CHEESECAKE
- CREME BRULEE
- BREAD PUDDING
- TARTUFO
- PANNA COTTA
- CHOCOLATE MOUSSE CAKE
- CHOCOLATE MOUSSE

## Ingredients Used

	MACKEREL	\$5.5
	EDAMAME	\$4.5
	DUCK	

- SHRIMP
- SALMON
- SAUSAGE
- MANGO
- ITALIAN SAUSAGE
- TUNA
- CORN
- BEEF
- EEL
- SEAFOOD
- MISO
- PORK MEAT
- CHOCOLATE
- PRAWNS
- SCALLOPS
- CHEESE



# Wabi Sabi Menu



MUSHROOMS

YELLOWTAIL

VEGETABLES

ESCARGOT

## Wabi Sabi

407 Broad Street, Bloomfield,  
07003, United States Of America

### Opening Hours:

Tuesday 04:30 -21:00  
Wednesday 04:30 -21:00  
Thursday 04:30 -21:00  
Friday 11:30 -21:30  
Saturday 11:30 -21:30  
Sunday 11:30 -20:30

Made with [menuweb.menu](https://menuweb.menu)

