

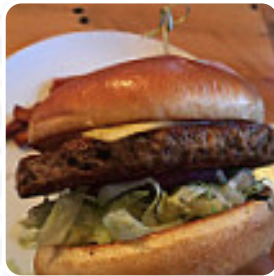
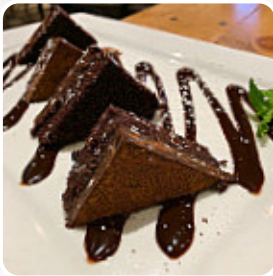


The Howe Daily Kitchen Menu

<https://menuweb.menu>

3675 Minnehaha Ave Minneapolis, MN 55406, United States

+16127293663 - <http://www.howempls.com/>



The menu of The Howe Daily Kitchen from Minneapolis comprises about **246** different dishes and drinks. On average you pay about \$9.2 for a dish / drink. The restaurant offers a beautiful remodel from the original, with a modern feel both inside and out. The service was generally good, with some occasional slowness noted. The food received mixed reviews, with some dishes like the burgers and classic bloody mary being highlights while others like the stuffed shrimp fell short in terms of flavor. Outdoor dining by the water was a highlight for some customers. Service hiccups were noted but quickly resolved, and the beer list was praised. The varied menu offered options for all, including vegan and gluten-free choices, although not all dishes hit the mark for every diner. Overall, a decent spot worth checking out for a variety of dining preferences.

The Howe Daily Kitchen Menu



Desserts

CHOCOLATE CAKE

Non Alcoholic Drinks

WATER

Soups

SOUP OF THE DAY

Pizza

MARGHERITA \$9.5

Sandwiches & Hot Paninis

HAMBURGER

Vegetarian

CAULIFLOWER

Toast

AVOCADO TOAST \$9.0

Fish Dishes

FISH CHIPS \$14.0

Starters & Salads

FRENCH FRIES

Rice Husk

VEGETABLE OF THE DAY \$5.0

Appetizer

CEVICHE

Quiche

VEGGIE QUICHE \$11.0

Chicken Dishes

CHICKEN TENDERS \$8.0

Beef Dishes

BRISKET

Cocktails

BLOODY MARY

Potatoes

HASHBROWNS \$2.5

Kids Menu

TENDERS FRIES \$11.0

Cider

SOCIABLE CIDER WERKS
FREEWHEELER, 5.0% ABV

Chicken Wings

WINGS

California Roll - Inside Out

BERRY \$12.0

Hot Drinks

TEA

Sweet Treats

FROZEN PUPCAKE \$5.0

The Howe Daily Kitchen Menu



Breakfast Specials

STUFFED FRENCH TOAST \$9.0

Flatbreads & Empanadas

PROSCIUTTO FIG \$11.0

Brunch Menu

STEAK TIPS EGGS \$15.0

Pappy Tizers

IDAHO NACHOS \$12.0

Kid's Breakfast

ONE PANCAKE \$2.5

Family Style Sides

JALAPENO CHEDDAR BISCUITS \$3.0

Poorboy's Omelets

GARDEN OMELET \$12.0

Standard Styles

COORS LIGHT, 4.2% ABV

Family Dinners To Go

BRISKET DINNER \$15.0

Condiments And Sauces

HUMMUS \$9.0

Sides

FRESH FRUIT \$2.5

Pooch Entrees

K-9 CHICKEN \$7.0

Complete Breakfast

CORNED BEEF HASH \$10.0

Geeky

PRAIRIE FUNKY GOLD SIMCOE

Meat & Ribs

SAUSAGE LINKS \$2.5

Uncategorized

BREAST THIGH \$11.0

Main Courses

CLASSIC CHEESE BURGER \$10.0

NACHOS

Drinks

BEER

DRINKS

Chicken

LEG THIGH \$8.0

BUFFALO CHICKEN \$13.0

Sauces

BBQ

RANCH

Mexican Dishes

BREAKFAST BURRITO \$10.5

The Howe Daily Kitchen Menu



TACOS

Popular Items

ELLSWORTH CHEESE CURDS \$7.0

BREAST WING \$10.0

Treats

FROZEN SMOKED BEEF MARROW BONE

CHEWY SMOKED PIG'S EAR \$4.0

...More

BROASTED CHICKEN SANDWICH \$11.0

3 TACOS^ \$12.0

Burger

CLASSIC CHEESEBURGER \$10.0

VEGGIE BURGER \$13.0

TURKEY BURGER \$9.0

Coming Soon

FULTON THE LONELY BLONDE ALE, 4.8% ABV

GREEN FLASH SEA TO SEA, 4.8% ABV

SUMMIT OATMEAL STOUT NITRO, 4.7% ABV

Broasted

2 PIECE LEG WING \$7.0

1/2 A BIRD \$15.0

THE WHOLE DAMN BIRD \$25.0

Breakfast

CLASSIC EGGS BENEDICT \$9.0

TWO EGGS \$2.5

SWEET POTATO HASH \$2.5

TWO PIECES OF TOAST \$2.5

Dessert



LAVA CAKE ICE CREAM \$7.0

VEGAN CHOCOLATE MOUSSE CAKE \$7.0

CREPES

PANCAKE

Burgers & More

RED WINE BURGER \$13.0

DRUNKIN' LUCY BURGER \$14.0

STATION 21 BURGER \$14.0

LONGFELLOW BURGER \$13.0

Cans

BURNING BROTHERS PYRO AMERICAN PALE ALE, 4.6% ABV

DOMESTIC TALLBOYS

HAMM'S, 4.7% ABV

HEINEKEN, 5.4% ABV

PABST BLUE RIBBON (PBR), 4.7% ABV

The Howe Breakfast

JALAPENO CHEDDAR BISCUITS GRAVY \$10.0

SPICY BENEDICT \$10.0

CHICKEN IN WAFFLES \$10.0

HOWE EVER YOU WANT IT \$9.0

PACOS \$9.0

Restaurant Category

VEGAN

The Howe Daily Kitchen Menu



FRENCH
GLUTEN FREE
VEGETARIAN
MEXICAN

Entrées

| | |
|-----------------|--------|
| PRETZEL STICKS | \$7.0 |
| TUNA TAR TARE | \$13.0 |
| STEAK BITES | \$11.0 |
| BASKET OF FRIES | \$5.0 |
| ONION RINGS | |
| FRIED SHRIMP | |

Starters

| | |
|-------------------------------|--------|
| CURRIED NOODLES TOFU | \$13.0 |
| PLANK SALMON DINNER* | \$19.0 |
| PORTABELLA POBLANO ENCHILADAS | \$14.0 |
| TURKEY MUTT LOAF | \$5.0 |
| SOUTHSIDE PUP BURGER | \$7.0 |
| POOCHED EGG BRUNCH BOWL | \$5.0 |

Salads

| | |
|-----------------------|--------|
| SIDE SALAD | \$5.0 |
| BUFFALO CHICKEN SALAD | \$13.0 |
| THAI PEANUT CHICKEN | \$11.0 |
| COLESLAW | \$4.0 |
| STEAK COBB SALAD | \$15.5 |
| DEVEILED CAESAR* | \$11.0 |
| BERRY* | \$12.0 |

Bottles

COORS BANQUET, 5.0% ABV

ODOUL'S AMBER, 0.5% ABV
OMISSION GLUTEN FREE IPA, 6.7% ABV
OMISSION GLUTEN FREE LAGER, 4.6% ABV
TRULY SPIKED AND SPARKLING COLIMA LIME, 5.0% ABV
TRULY SPIKED AND SPARKLING GRAPEFRUIT POMELO, 5.0% ABV
TRULY SPIKED AND SPARKLING POMEGRANATE

Main

| | |
|----------------------------|--------|
| BROASTED WINGS | |
| VEGAN KOREAN BBQ | \$12.0 |
| NORDEAST BRUSSELS SPROUTS^ | \$8.5 |
| BROCCOLI CHEESE TATER TOTS | \$8.0 |
| BRIE BACON DIP^ | \$9.0 |
| NORDEAST MUSHROOMS | \$8.5 |
| BROASTED WINGS^ | |
| PARMESAN POLENTA FRIES^ | \$7.0 |

These Types Of Dishes Are Being Served



PANCAKES
MEAT
PANINI

BURGER
SALAD
CHICKEN
DESSERTS
JAMBALAYA

Side Dishes

TOTS

The Howe Daily Kitchen Menu



| | |
|------------------------------|-------|
| EGGS TOTS | \$8.0 |
| ENGLISH MUFFIN | \$2.5 |
| BEER BATTERED ONION RINGS | \$7.0 |

| | |
|--------------|-------|
| WAFFLE FRIES | \$5.0 |
| SIDE SALAD* | \$5.0 |
| FRENCH FRIES | |
| POTATO CHIPS | |
| CHEESE CURDS | |

| |
|------------|
| DUCK |
| VEGETABLES |
| KIMCHI |
| BROCCOLI |
| CHEDDAR |
| ONION |
| SALMON |
| SCALLOPS |
| FRUIT |

Sandwiches



| | |
|---------------------------|--------|
| BRISKET GRILLED CHEESE | \$13.5 |
| EGG SANDWICH | \$9.0 |
| CHICKEN SALAD SANDWICH | \$9.0 |

| | |
|---------------------|--------|
| BLT A | \$11.0 |
| TURKEY CLUB | \$12.5 |
| FRENCH DIP SANDWICH | |
| GRILLED CHEESE | |
| CHEESE SANDWICH | |
| CHICKEN SANDWICH | |
| REUBEN SANDWICH | |

Ingredients Used



| | |
|--------|-------|
| BACON | \$2.5 |
| TOFU | |
| CHEESE | |

| |
|-----------|
| CHOCOLATE |
| PRAWNS |
| SHRIMP |
| TOMATOES |
| KALE |
| CORN |

On Tap

| |
|--|
| 3 SHEEPS CASHMERE HAMMER (NITRO), 6.5% ABV |
| ALASKAN HERITAGE COFFEE BROWN, 7.0% ABV |
| ALESMITH .394 PALE ALE, 6.0% ABV |
| ALPINE WILLY VANILLY |
| ANGRY ORCHARD CRISP APPLE CIDER, 5.0% ABV |
| BEAR REPUBLIC HULL MELON REBELLION. 6.0% ABV |
| BELL'S OATSMOBILE, 4.3% ABV |
| BENT BREWSTILLERY MAROON AND BOLDER, 9.5% ABV |
| BOULDER HAZED HOPPY SESSION ALE, 5.0% ABV |
| CASTLE DANGER CREAM ALE, 5.5% ABV |
| CASTLE DANGER MOSAIC FRESH HOP IPA, 6.8% ABV |
| CLOWN SHOES HOPPY FEET, 7.0% ABV |
| DESCHUTES FRESH SQUEEZED IPA, 6.4% ABV |
| FINNEGANS IRISH AMBER, 4.63% ABV |
| GRAIN BELT NORDEAST, 4.7% ABV |
| GRAIN BELT PREMIUM, 4.7% ABV |

The Howe Daily Kitchen Menu



GRAND TETON WAKE UP CALL, 7.5%
ABV

GREEN FLASH PALATE WRECKER, 9.5%
ABV

HARRIET ISLAND DIVINE OCULUST, 8.5%
ABV

INSIGHT DOUBLE DRY HOPPED IPA,
7.0% ABV

LIFT BRIDGE FARM GIRL SAISON, 6.0%
ABV

LTD EMILY'S DREAM #12, 3.8% ABV

MCKENZIE'S BLACK CHERRY HARD
CIDER, 5.0% ABV

MILLER GENUINE DRAFT (MGD), 4.7%
ABV

MILLER LITE, 4.2% ABV

MILLSTREAM GERMAN PILSNER, 4.5%
ABV

NORTHGATE RED HEADED PIPER, 4.5%
ABV

ODELL IPA, 7.0% ABV

OMNIPOLLO NAUTILUS, 4.5% ABV

SAUGATUCK BARREL-AGED
NEAPOLITAN MILK STOUT, 6.3% ABV

SIXPOINT 5 BEANS BARREL AGED

SIXPOINT BENGALI TIGER IPA, 6.4% ABV

SIXPOINT RESIN, 9.1% ABV

SIXPOINT SESHAR PALE ALE, 5.4% ABV

SUMMIT EXTRA PALE ALE, 5.3% ABV

SURLY HELL LAGER, 4.5% ABV

SURLY TODD THE AXE MAN, 7.2% ABV

TYRANENA 3 BEACHES, 5.0% ABV

ALESMITH SPEEDWAY STOUT
VIETNAMESE COFFEE, IMPERIAL STOUT,
12.0%, SAN DIEGO, CA

AVERY ELLIE'S BROWN, BROWN ALE,
5.5%, BOULDER, CO

BALLAST POINT CALICO AMBER,
AMBER ALE RED ALE, 5.0%, SAN DIEGO,
CA

BALLAST POINT GRAPEFRUIT SCULPIN,
INDIA PALE ALE (IPA), 7.0%, SAN DIEGO,
CA

BEAR REPUBLIC HOP ROD RYE, INDIA
PALE ALE (IPA), 8.0%, HEALDSBURG, CA

BELL'S OBERON, WHEAT ALE, 5.8%,
KALAMAZOO, MI

BENT BREWSTILLERY OAKMEAL STOUT,
STOUT, 8.5

BENT PADDLE COLD PRESS BLACK
ALE, STOUT, 6.0

BENT PADDLE VENTURE PILS, PILSNER,
5.0

CASTLE DANGER CREAM ALE, CREAM
ALE, 5.5%, TWO HARBORS, MN

CENTRAL WATERS HHG APA, AMERICAN
PALE ALE · 5.5%, AMHERST, WI

CLOWN SHOES MANGO KOLSCH,
KOLSCH, 6.0%, IPSWICH,
MASSACHUSETTS

FAIR STATE CROMULENCE

FINNEGANS IRISH AMBER, IRISH RED
ALE, 4.63%, MINNEAPOLIS, MN

FOUNDERS DIRTY BASTARD, SCOTCH
ALE, 8.5%, GRAND RAPIDS, MI

FULTON 300, INDIA PALE ALE (IPA), 6.9%,
MINNEAPOLIS, MN

GREAT LAKES CHILLWAVE,
IMPERIAL/DOUBLE IPA, 9.0%,
CLEVELAND, OH

HAMMERHEART VON WINTERHERZ
VERHASST, GERMAN HEFEWEIZEN,
8.3%, LINO LAKES, MN

Beers

ALESMITH, 394 PALE ALE, AMERICAN
PALE ALE, 6.0%, SAN DIEGO, CA

The Howe Daily Kitchen Menu



INDEED SHENANIGANS, WHEAT ALE,
5.0%, MINNEAPOLIS, MN

INSIGHT SUNKEN CITY, SAISON, 7.8

INSIGHT TROLL WAY IPA, 7.0

LAGUNITAS HOP STOOPID ALE,
IMPERIAL/DOUBLE IPA, 8.0%,
PETALUMA, CA

LIFT BRIDGE FARM GIRL SAISON,
SAISON, 6.0

LOON JUICE HONEY CRISP CIDER,
CIDER

LTD EMILY'S DREAM #9, SOUR ALE/WILD
ALE, 5.5

MCKENZIE'S BLACK CHERRY HARD
CIDER, CIDER, 5.0%, WEST SENECA, NY

NEW BELGIUM CITRADELIC, INDIA PALE
ALE (IPA), 6.0%, FORT COLLINS, CO

ODELL ST. LUPULIN, AMERICAN PALE
ALE, 6.5%, FORT COLLINS, CO

SCHELL'S SHOCKED RADLER, 2.8%,
NEW ULM, MN

SCHILLING LUMBERJACK RHUBARB
CIDER, CIDER, 6.0%, SEATTLE, WA

SIXPOINT JAMMER, GOSE, 4.2%,
BROOKLYN, NY

SIXPOINT PUFF IPA, IMPERIAL/DOUBLE
IPA, 9.8%, BROOKLYN, NY

SIXPOINT RESIN, IMPERIAL/DOUBLE IPA,
9.1%, BROOKLYN, NY

SUMMIT EXTRA PALE ALE, AMERICAN
PALE ALE, 5.3%, SAINT PAUL, MN

SURLY HELL LAGER,
DORTMUNDER/HELLES, 4.5%,
MINNEAPOLIS, MN

SURLY TODD THE AXE MAN, INDIA PALE
ALE (IPA), 7.2%, MINNEAPOLIS, MN

TIN WHISKERS WHEATSTONE BRIDGE,
WHEAT ALE, 5.4

WHITE BIRCH SMALL BATCH ALE
WATERMELON WHEAT, FRUIT BEER,
6.0%, HOOKSETT, NH

The Howe Daily Kitchen

3675 Minnehaha Ave
Minneapolis, MN 55406, United
States

Opening Hours:

Monday 09:00-22:00
Tuesday 09:00-22:00
Wednesday 09:00-22:00
Friday 09:00-00:00
Saturday 09:00-00:00
Sunday 09:00-22:00

Made with menuweb.menu

