



Asian Diner Menu

<https://menuweb.menu>

1691 Rt 46, Roxbury Township, NJ, 07852, LEDGEWOOD, United States
+19734260688 - <https://www.asiandinerledgewood.com/>



The restaurant from LEDGEWOOD offers **437** different **dishes and drinks** on [the menu](#) at an average price of \$11.7.

Asian Diner Menu



Non Alcoholic Drinks

SNAPPLE \$2.4

Pizza

FUSION PIZZA

Maki

CHICKEN TEMPURA \$16.0

Extras

1. STEAMED VEGETABLES \$12.5

Wraps

TUNA CUCUMBER ROLL \$6.0

Side Dishes

BROWN RICE

Drinks

BEER

Rice

SEAFOOD PINEAPPLE FRIED RICE \$13.5

Side Orders

HOUSE FRIED NOODLES \$2.0

Appetizer

BEEF NEGIMAKI \$6.8

Beef Dishes

FILET MIGNON \$13.0

Rolls

SPICY SALMON ROLL \$6.5

From The Grill

BBQ RIBS \$11.0

Lunch Plates

SALMON LUNCH BOX \$12.0

Main Course

VEGETABLE TERIYAKI \$11.3

Fried Rice

CHICKEN PINEAPPLE FRIED RICE \$11.0

Tofu

TOFU THAI CURRY \$13.5

Mexican Dishes

TACOS

Inside Out Makis

PARADISE ROLL \$15.3

Omelettes

DINOSAUR EGG \$11.0

Fish

SALMON ROLL \$5.5

Kids Menu

KIDS FRIED SHRIMP \$5.0

Asian Diner Menu



Lunch Menu

VEGETABLE LUNCH BOX \$10.0

Rice Bowl

EEL DON \$23.0

Inside-Out-Maki

BOSTON ROLL \$5.5

Chow Mein

6. PORK CHOW MEIN \$12.5

Vegetables

3. EGGPLANT WITH GARLIC SAUCE \$12.5

Dinner

CHICKEN AND STEAK DINNER \$22.0

Chef Specialties

S16. BLACK PEPPER CHICKEN \$18.5

Kid's Menu

KIDS CHICKEN FINGER \$5.0

Side Order

ALMOND COOKIES \$2.0

Lunch Boxes

CHICKEN KATSU LUNCH BOX \$13.0

Seafood Dishes

FRIED CALAMARI \$7.5

Chef Special

S6. PINEAPPLE CHICKEN \$16.0

Party Special

5. HOUSE SPECIAL LO MEIN \$12.0

Stir-Fried Noodles

BEEF YAKI UDON \$13.0

Chef's Special Roll

PINK LADY ROLL \$16.0

Dinner Specials

STEAK AND SHRIMP DINNER \$22.3

Specialty Rolls

GODZILLA ROLL \$13.0

Shrimp

4. SHRIMP LO MEIN \$12.0

Hibachi Dinner Entrees

STEAK HIBACHI DINNER \$20.3

Sushi Entree

SUSHI SASHIMI COMBO \$27.0

Combination Platters

15. CHICKEN WITH BROCCOLI \$13.5

Chef's Suggestions

10. CHICKEN WITH CASHEW NUTS \$13.5

Asian Diner Menu



Appetizer From Kitchen

6 PIECE FRIED MEAT DUMPLINGS \$7.0

Noodle And Fried Rice

4. HOUSE SPECIAL MEI FUN \$12.0

Chow Mei Fun

5. SINGAPORE MEI FUN \$12.0

Noodle & Rice

SEAFOOD JAPANESE FRIED RICE \$13.0

Sushi Platters

TUNA AND SALMON LOVER \$26.0

Lunch Combo

23. SHRIMP WITH BROCCOLI \$15.5

Just For Kids

KIDS CHICKEN NUGGETS \$5.0

Dinner Combinations

9. MOO GOO GAI PAN \$13.5

Special Lunch

7. BEEF WITH BROCCOLI LUNCH \$8.2

Cold Appetizer

CITRON SALMON CARPACCIO \$13.0

Classic Roll & Hand Roll

SPICY SCALLOP CRUNCH ROLL \$7.5

Appetizers From Sushi Bar

ASIAN DINER TARTAR \$12.0

Kitchen Lunch Special

STEAK HIBACHI LUNCH \$13.0

Combination Plate

25. SHRIMP WITH GARLIC SAUCE \$15.5

Uncooked Fish Rolls

SPICY SHRIMP CRUNCH ROLL \$5.5

Healthy Choice

4. STEAMED BEEF WITH BROCCOLI \$15.5

Udon Or Soba

SEAFOOD YAKI UDON \$15.0

Sashimi A La Carte

3 PIECE BLACK PEPPER TUNA SASHIMI \$6.5

Vegetarian Sushi Rolls

MANGO TANGO ROLL \$17.0

Appetizer From Sushi Bar

7 PIECE SASHIMI APPETIZER \$10.0

Dinner Platters

2. SHRIMP CHOW MEIN DINNER \$11.0

Asian Diner Menu



Recommended

VEGETABLE THAI NOODLES \$12.5

Combination Specials

6. CHICKEN CHOW MEIN \$12.5

Hibachi Dinners

CHICKEN AND SCALLOP HIBACHI DINNER \$21.3

Teriyaki Dinners

SEAFOOD TERIYAKI \$23.0

Chef Special Rolls

ANGRY DRAGON ROLL \$16.0

Bangkok Specialty

SHRIMP PINEAPPLE FRIED RICE \$12.0

Kid Meal

KIDS FRIED SCALLOPS \$5.0

Rolls And Hand Rolls

YELLOWTAIL JALAPENO ROLL \$6.0

Special Combination Platters

14. CHICKEN WITH MIXED VEGETABLES \$13.5

Health Food Section

1. STEAMED BROCCOLI \$12.5

Noodles & Rice (Kitchen Entrées)

HOUSE JAPANESE FRIED RICE \$12.0

Shinto Sashimi & Boat Combos (Sushi)

LOVE BOAT FOR 1 \$31.0

Chow Fun & Chow Mein

3. SHRIMP CHOW FUN \$12.0

Noodle Soup Special

N7. MIXED VEGETABLES NOODLE SOUP \$11.0

Inside Out Rolls - Sushi

TUNA ROLL \$5.5

Teppanyaki Menu

FILET MIGNON DINNER \$26.0

Chow Mei Fun & Chow Fun

1. VEGETABLE CHOW FUN \$10.5

Tempura Dishes

CHICKEN TEMPURA ROLL \$7.0

Chicken Luncheon Special

13. CHICKEN WITH STRING BEAN \$13.5

Asian Diner Menu



Chef's Special Dinner

3. BEEF CHOW FUN \$12.0

Imperial Koi Specialty Rolls

IMPERIAL KOI ROLL \$16.5

Special Baked Rolls

NINJA ROLL \$14.0

Chef's Specialties

S2. COCONUT CHICKEN \$15.5

Chef's Special

S12. LAKE TONG TING SHRIMP \$16.5

Japanese Lunch Box

CHICKEN TEMPURA LUNCH BOX \$11.0

Beef Items

7. BEEF CHOW MEIN \$13.5

Lunch Box Specials

TON KATSU LUNCH BOX \$13.0

Chinese Mains Entree

S9. DRAGON AND PHOENIX \$17.0

Kitchen Entree Teriyaki

SCALLOP TERIYAKI \$20.0

Appetizer, Salad & Soup

4 PIECE SUSHI APPETIZER \$8.0

Thin Roll

SALMON AVOCADO ROLL \$6.0

Special Luncheons

9. HUNAN BEEF LUNCH \$8.2

Extra Value Combo Meal Special

23. BEEF WITH BROCCOLI \$15.5

Hibachi Emperor's Dinner

CHICKEN AND FILET MIGNON DINNER \$23.0

Katsu & Curry

TON KATSU \$18.3

Lunch Traditions Chicken

9. HUNAN CHICKEN LUNCH \$8.2

Seafood Chinese

22. SHRIMP WITH MIXED VEGETABLES \$15.5

Chinese Luncheon Platter

5. CHICKEN WITH GARLIC SAUCE LUNCH \$8.2

Asian Diner Menu



Asian Diner Specialty Rolls

ASIAN DINER ROLL \$16.0

Crepes Variations

SHRIMP TERIYAKI \$16.0

Main Dishes - Bento Menu

STEAK TERIYAKI \$18.3

Lunch Menu - Asian Dishes

CHICKEN THAI CURRY \$14.5

Special Breaded Sushi

ALASKA ROLL \$6.0

Sushi & Sashimi - Entree

SPICY ROLL COMBO \$17.0

Donburi

SALMON DON \$19.0

TUNA DON \$20.0

Pork

15. PORK WITH BROCCOLI \$13.5

17. PORK WITH GARLIC SAUCE \$13.5

Beef

27. PEPPER STEAK WITH ONION \$15.5

BEEF THAI CURRY \$15.5

Vegetarian Dishes

VEGETABLE THAI CURRY \$13.5

CUCUMBER AND AVOCADO ROLL \$5.0

House Specialties

CHICKEN THAI NOODLES \$12.5

BEEF THAI NOODLES \$13.5

Maki Sushi

SALMON SKIN ROLL \$5.5

DYNAMITE ROLL \$16.3

Chef's Specialties

S5. MANGO CHICKEN \$16.0

S15. HAPPY FAMILY \$18.5

Special Roll

SNOW MOUNTAIN ROLL \$14.0

VALENTINE ROLL \$17.0

Signature Rolls

VOLCANO ROLL \$15.0

AVATAR ROLL \$18.0

Japanese Specialties

VEGETABLE TEMPURA \$7.0

MISO SOUP \$3.0

Teriyaki

TOFU TERIYAKI \$13.0

TWIN LOBSTER TAIL TERIYAKI \$21.3

Asian Diner Menu



Chef's Special

S14. SEAFOOD COMBINATION	\$18.5
S20. CHICKEN TERIYAKI	\$16.5

Noodle And Rice

VEGETABLE PINEAPPLE FRIED RICE	\$10.5
N9. SEAFOOD NOODLE SOUP	\$13.0

Maki & Temaki

FUTO MAKI	\$6.0
SPICY YELLOWTAIL ROLL	\$6.5

Thai Curry Dishes

SHRIMP THAI CURRY	\$15.5
HOUSE SPECIAL THAI CURRY	\$16.5

Special Combination Plates

8. SWEET AND SOUR CHICKEN	\$13.5
8. SWEET AND SOUR PORK	\$13.5

Diet Dishes

2. STEAMED CHICKEN WITH BROCCOLI	\$13.5
3. STEAMED SHRIMP WITH BROCCOLI	\$15.5

Luncheon Special

12. KUNG PAO CHICKEN	\$13.5
2. CHICKEN CHOW MEIN LUNCH	\$8.0

Hibachi Dinner Combo

CHICKEN AND SALMON DINNER	\$22.0
---------------------------	--------

SHRIMP AND SALMON DINNER	\$22.0
--------------------------	--------

Roll And Hand Roll

YELLOWTAIL SCALLION ROLL	\$6.0
EEL CUCUMBER ROLL	\$6.0

Sashimi (3 Pieces)

3 PIECE TOFU SKIN SASHIMI	\$5.8
3 PIECE SPICY TUNA SASHIMI	\$6.0

Pineapple Fried Rice

ROAST PORK PINEAPPLE FRIED RICE	\$11.0
BEEF PINEAPPLE FRIED RICE	\$12.0

Tokyo Lunch Boxes

SHRIMP LUNCH BOX	\$11.0
STEAK LUNCH BOX	\$13.0

Japanese Vegetable Rolls

SWEET POTATO ROLL	\$5.0
PEANUT AVOCADO ROLL	\$5.0

Maki And Hand Rolls

SALMON CUCUMBER ROLL	\$6.0
SHRIMP AVOCADO ROLL	\$6.0

Special Noodle House

N11. ROAST PORK AND CHICKEN DUMPLING NOODLE SOUP	\$13.0
N13. SEAFOOD AND CHICKEN DUMPLING NOODLE SOUP	\$15.0

Asian Diner Menu



Salads

SEAWEED SALAD	\$5.5
AVOCADO SALAD	\$6.5
GRILL CHICKEN SALAD	\$7.5

Salad

KANI SALAD	\$6.0
GREEN SALAD	\$4.5
GRILL SHRIMP SALAD	\$8.5

Seafood

TRIPLE DELIGHT	\$23.0
28. SHRIMP WITH LOBSTER SAUCE	\$15.5
SHRIMP TEMPURA	\$16.3

Chicken

17. CHICKEN WITH GARLIC SAUCE	\$13.5
CHICKEN KATSU	\$18.0
11. CHICKEN WITH SNOW PEAS	\$13.5

Thai Noodles

TOFU THAI NOODLES	\$12.5
SHRIMP THAI NOODLES	\$13.5
HOUSE SPECIAL THAI NOODLES	\$14.5

Yaki Udon

VEGETABLE YAKI UDON	\$11.5
CHICKEN YAKI UDON	\$12.0
SHRIMP YAKI UDON	\$13.0

Lunch Box

TOFU LUNCH BOX	\$10.0
----------------	--------

CHICKEN TERIYAKI LUNCH BOX	\$10.5
SCALLOP LUNCH BOX	\$12.0

Asian

EGG ROLL	\$2.0
SPRING ROLL	\$2.5
WONTON SOUP	\$3.0

Sushi A La Carte

2 PIECE FLYING FISH ROE SUSHI	\$5.0
2 PIECE SCALLOP SUSHI	\$5.5
2 PIECE BLACK PEPPER TUNA SUSHI	\$5.5

Dinner Special

20. BEEF WITH SNOW PEAS	\$15.5
3. SWEET AND SOUR CHICKEN DINNER	\$11.0
16. BEEF LO MEIN DINNER	\$11.3

Lo Mein

1. PLAIN LO MEIN	\$10.0
2. VEGETABLE LO MEIN	\$10.5
3. CHICKEN LO MEIN	\$11.5
3. PORK LO MEIN	\$11.5

Beverages

CAN DRINKS	\$1.3
BOTTLE SODA 20 OZ.	\$2.4
2 LITER SODA	\$4.0
HOMEMADE ICED TEA	\$2.3

Chow Fun

2. CHICKEN CHOW FUN	\$11.0
---------------------	--------

Asian Diner Menu



2. PORK CHOW FUN	\$11.0
4. HOUSE SPECIAL CHOW FUN	\$12.0
5. SINGAPORE CHOW FUN	\$12.0

These Types Of Dishes Are Being Served



LOBSTER	\$13.5
SALMON TERIYAKI	\$16.3
SALAD	

SOUP

Appetizers

VEGETABLE ROLL	\$2.0
COLD SESAME NOODLE	\$6.0
SZECHUAN WONTON	\$6.5
CHICKEN ON STICK	\$6.7
BEEF ON STICK	\$7.3

Lunch Specials

25. BEEF WITH GARLIC SAUCE	\$15.5
2. SHRIMP CHOW MEIN LUNCH	\$8.0
3. SWEET AND SOUR CHICKEN LUNCH	\$8.0
15. CHICKEN LO MEIN LUNCH	\$8.1
16. SHRIMP LO MEIN LUNCH	\$8.1

Mei Fun

1. VEGETABLE MEI FUN	\$10.5
2. CHICKEN MEI FUN	\$11.0
2. PORK MEI FUN	\$11.0
3. SHRIMP MEI FUN	\$12.0
3. BEEF MEI FUN	\$12.0

Ingredients Used

EDAMAME	\$5.5
CHICKEN TERIYAKI	\$15.3
WHITE RICE	
TUNA	
MISO	

Popular Items



2 ROLLS LUNCH	\$10.0
3 ROLLS LUNCH	\$13.0
13. GENERAL TSO'S CHICKEN LUNCH	\$8.2

13. GENERAL TSO'S CHICKEN DINNER	\$11.3
CHICKEN AND SHRIMP HIBACHI DINNER	\$20.3
S3. GENERAL TSO'S CHICKEN	\$15.5

Sushi Bar Entrees

CHIRASHI	\$22.0
SUSHI REGULAR	\$19.0
SASHIMI REGULAR	\$22.0
ASIAN DINER SUSHI FOR 2	\$47.0
ASIAN DINER SUSHI SASHIMI FOR 2	\$60.0
SUSHI DELUXE	\$21.0

Japanese Fried Rice

VEGETABLE JAPANESE FRIED RICE	\$10.0
PORK FRIED JAPANESE RICE	\$10.5
CHICKEN JAPANESE FRIED RICE	\$10.5
SHRIMP JAPANESE FRIED RICE	\$11.5
BEEF JAPANESE FRIED RICE	\$11.5

Asian Diner Menu



YANG CHOW JAPANESE FRIED RICE \$12.5

Soups

EGG DROP SOUP \$3.0
HOT SOUR SOUP \$3.2
CHICKEN RICE SOUP \$3.2
CHICKEN NOODLE SOUP \$3.2
TOFU WITH MIXED VEGETABLE SOUP \$6.0
SEAFOOD SOUP \$11.0
N5. ROAST PORK NOODLE SOUP \$11.0

Special Rolls

YELLOWTAIL JALAPEÑO \$11.0
TUNA AVOCADO ROLL \$6.0
GREEN DRAGON ROLL \$16.0
SALMON ON THE BEACH ROLL \$15.0
SEXY GIRL ROLL \$16.0
LEDGEWOOD ROLL \$18.0
PHOENIX ROLL \$17.0

Lunch Special

7. SHRIMP CHOW MEIN \$13.5
24. SHRIMP WITH SZECHUAN STYLE \$15.5
4. BEEF LO MEIN \$12.0
3. SWEET AND SOUR PORK LUNCH \$8.0
6. CHICKEN WITH BROCCOLI LUNCH \$8.2
16. BEEF LO MEIN LUNCH \$8.1
19. BONELESS SPARE RIBS LUNCH \$8.7

Hibachi Lunch

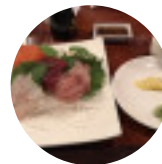


VEGETABLE HIBACHI LUNCH \$10.5
CHICKEN HIBACHI LUNCH \$11.0
SHRIMP HIBACHI LUNCH \$12.0
SCALLOP HIBACHI LUNCH \$12.0
SALMON HIBACHI LUNCH \$12.5
FILET MIGNON HIBACHI LUNCH \$13.5
LOBSTER HIBACHI LUNCH \$14.0

Special Wings

W1. SIX PIECE WINGS
W2. EIGHT PIECE WINGS
W3. TEN PIECE WINGS
W4. FRIED SCALLOPS
W5. CHICKEN NUGGETS
W6. FRIED SHRIMP
W7. CHICKEN FINGER

Sashimi



3 PIECE MASAGO SASHIMI \$5.8
3 PIECE SURF CLAM SASHIMI \$6.0
3 PIECE SQUID SASHIMI \$6.0
3 PIECE FLYING FISH ROE SASHIMI \$6.0
3 PIECE STRIPED BASS SASHIMI \$5.5
3 PIECE FLUKE SASHIMI \$5.5
3 PIECE MACKEREL SASHIMI \$5.5
SASHIMI DELUXE \$24.0

Vegetarian Menu

V1. GENERAL TSO'S CHICKEN \$14.5

Asian Diner Menu



V2. SESAME CHICKEN	\$14.5
V3. MANGO CHICKEN	\$14.5
V4. CHICKEN BROCCOLI	\$14.5
V5. CHICKEN HONOLULU	\$14.5
V6. ORANGE BEEF	\$14.5
V7. BEEF BROCCOLI	\$14.5
V8. SESAME BEEF	\$14.5

Sushi Rolls



AVOCADO ROLL	\$4.0
CUCUMBER ROLL	\$4.0
PHILADELPHIA ROLL	\$6.0
SHRIMP TEMPURA ROLL	\$8.0
YELLOWTAIL ROLL	\$5.5
EEL AVOCADO ROLL	\$6.0
DRAGON ROLL	\$13.0
RAINBOW ROLL	\$13.0
SUSHI	

Noodle Soup Specialties

N1. CHICKEN DUMPLING NOODLE SOUP	\$11.0
N2. SHRIMP WONTON NOODLE SOUP	\$11.0
N3. SPICY SHREDDED CHICKEN NOODLE SOUP	\$11.0
N4. SPICY SHREDDED BEEF NOODLE SOUP	\$11.0
N6. SLICED CHICKEN NOODLE SOUP	\$11.0
N8. JUMBO SHRIMP NOODLE SOUP	\$12.0
N10. ROAST PORK AND SHRIMP WONTON NOODLE SOUP	\$13.0
N12. SEAFOOD AND SHRIMP WONTON NOODLE SOUP	\$15.0

N14. NABEYAKI UDON NOODLE SOUP	\$15.0
--------------------------------	--------

Nigiri Sashimi

3 PIECE CRAB STICK SASHIMI	\$6.0
3 PIECE WHITE TUNA SASHIMI	\$6.0
3 PIECE SALMON SASHIMI	\$6.0
3 PIECE SHRIMP SASHIMI	\$6.0
3 PIECE OCTOPUS SASHIMI	\$6.0
3 PIECE SMOKED SALMON SASHIMI	\$6.5
3 PIECE YELLOWTAIL SASHIMI	\$6.5
3 PIECE EEL SASHIMI	\$6.5
3 PIECE SCALLOP SASHIMI	\$6.5
3 PIECE TUNA SASHIMI	\$6.5

Uncategorized



FOXY LADY ROLL	\$16.0
CHICKEN HIBACHI DINNER	\$16.3
FILET MIGNON HIBACHI DINNER	\$26.8
LOBSTER HIBACHI DINNER	\$26.3
SALMON HIBACHI DINNER	\$20.3
SCALLOP HIBACHI DINNER	\$21.6
SHRIMP HIBACHI DINNER	\$18.3
VEGETABLE HIBACHI DINNER	\$15.0
EEL LOVER ROLL	\$16.0
SASHIMI SALAD	\$9.0

Chinese Lunch

1. MIXED VEGETABLE LUNCH	\$8.0
4. SAUTEED EGGPLANT WITH GARLIC SAUCE LUNCH	\$8.0

Asian Diner Menu



5. PORK WITH GARLIC SAUCE LUNCH	\$8.2
8. BEEF WITH STRING BEAN LUNCH	\$8.2
10. SHREDDED BEEF WITH GARLIC SAUCE LUNCH	\$8.2
11. JUMBO SHRIMP WITH BROCCOLI LUNCH	\$8.2
12. JUMBO SHRIMP WITH GARLIC SAUCE LUNCH	\$8.2
14. SHRIMP LOBSTER SAUCE LUNCH	\$8.2
15. PORK LO MEIN LUNCH	\$8.1
17. SESAME HONEY CHICKEN LUNCH	\$8.2
18. PEPPER STEAK WITH ONION LUNCH	\$8.2
20. CHICKEN WITH SNOW PEAS LUNCH	\$8.2
20. PORK WITH SNOW PEAS LUNCH	\$8.2

Our Chef Special

S1. SESAME HONEY CHICKEN	\$15.5
S3. SPICY ORANGE CHICKEN	\$15.5
S4. MONGOLION BEEF	\$16.5
S7. SPICY ORANGE BEEF	\$16.5
S8. TRIPLE DELIGHT WITH BROCCOLI	\$16.5
S10. COLOSSAL SHRIMP WITH HONEY WALNUTS	\$17.0
S11. SIZZLING SCALLOP AND BEEF	\$17.0
S13. DOUBLE DELIGHT WITH ASPARAGUS	\$18.0
S16. BLACK PEPPER STEAK	\$18.5
S17. HOUSE STEAK	\$18.5
S17. HOUSE CHICKEN	\$18.5

S18. CHO CHO CHICKEN	\$16.5
S19. SUBGUN WONTON	\$17.5

Entrées



SHRIMP TOAST	\$6.5
6 PIECE CRAB RANGOON	\$6.5
SHUMAI	\$6.5
AGE TOFU	\$6.7
6 PIECE STEAMED MEAT DUMPLINGS	\$6.7
6 PIECES STEAMED VEGETABLE DUMPLING	\$6.7
6 PIECE CHICKEN DUMPLINGS	\$6.7
TEMPURA APPETIZER	\$8.5
ROCK SHRIMP	\$11.0
BONELESS SPARERIBS	\$11.0
PU PU PLATTER	\$18.0
SOFT SHELL CRAB APP	\$9.3
BBQ SQUID	\$10.0
BLACK PEPPER TUNA TATAKI	\$11.0
TRUFFLE WHITE TUNA	\$12.0

Chinese Entrees

1. BROCCOLI WITH SAUCE	\$12.5
2. BUDDHIST DELIGHT	\$12.5
4. GENERAL TSO'S BEAN CURD	\$12.5
5. SESAME BEAN CURD	\$12.5
11. PORK WITH SNOW PEAS	\$13.5
13. PORK WITH STRING BEAN	\$13.5
14. PORK WITH MIXED VEGETABLES	\$13.5
16. CHICKEN WITH SZECHUAN STYLE	\$13.5
16. PORK WITH SZECHUAN STYLE	\$13.5

Asian Diner Menu



18. CHICKEN WITH HUNAN STYLE	\$13.5
18. PORK WITH HUNAN STYLE	\$13.5
19. CHICKEN WITH ASPARAGUS	\$13.5
19. PORK WITH ASPARAGUS	\$13.5
20. SHRIMP WITH SNOW PEAS	\$15.5
21. BEEF WITH STRING BEAN	\$15.5
21. SHRIMP WITH STRING BEAN	\$15.5
22. BEEF WITH MIXED VEGETABLES	\$15.5
24. BEEF WITH SZECHUAN STYLE	\$15.5
26. BEEF WITH HUNAN STYLE	\$15.5
26. SHRIMP WITH HUNAN STYLE	\$15.5
29. BEEF WITH ASPARAGUS	\$15.5
29. SHRIMP WITH ASPARAGUS	\$15.5

Chinese Dinner Combo

1. MIXED VEGETABLE DINNER	\$11.0
2. CHICKEN CHOW MEIN DINNER	\$11.0
3. SWEET AND SOUR PORK DINNER	\$11.0
4. SAUTEED EGGPLANT WITH GARLIC SAUCE DINNER	\$11.0
5. CHICKEN WITH GARLIC SAUCE DINNER	\$11.3
5. PORK WITH GARLIC SAUCE DINNER	\$11.3
6. CHICKEN WITH BROCCOLI DINNER	\$11.3
7. BEEF WITH BROCCOLI DINNER	\$11.3
8. BEEF WITH STRING BEAN DINNER	\$11.3
9. HUNAN BEEF DINNER	\$11.3
9. HUNAN CHICKEN DINNER	\$11.3
10. SHREDDED BEEF WITH GARLIC SAUCE DINNER	\$11.3

11. JUMBO SHRIMP WITH BROCCOLI DINNER	\$11.3
12. JUMBO SHRIMP WITH GARLIC SAUCE DINNER	\$11.3
14. SHRIMP LOBSTER SAUCE DINNER	\$11.3
15. PORK LO MEIN DINNER	\$11.3
15. CHICKEN LO MEIN DINNER	\$11.3
16. SHRIMP LO MEIN DINNER	\$11.3
17. SESAME HONEY CHICKEN DINNER	\$11.3
18. PEPPER STEAK WITH ONION DINNER	\$11.3
19. BONELESS SPARE RIBS DINNER	\$11.8
20. CHICKEN WITH SNOW PEAS DINNER	\$11.3
20. PORK WITH SNOW PEAS DINNER	\$11.3

Sushi



CALIFORNIA ROLL	\$5.0
SPICY TUNA ROLL	\$6.5
SASHIMI	
2 PIECE MASAGO SUSHI	\$4.8
2 PIECE TOFU SKIN SUSHI	\$4.8
2 PIECE CRAB STICK SUSHI	\$5.0
2 PIECE WHITE TUNA SUSHI	\$5.0
2 PIECE SALMON SUSHI	\$5.0
2 PIECE SHRIMP SUSHI	\$5.0
2 PIECE SURF CLAM SUSHI	\$5.0
2 PIECE SQUID SUSHI	\$5.0
2 PIECE OCTOPUS SUSHI	\$5.0
2 PIECE SMOKED SALMON SUSHI	\$5.5
2 PIECE YELLOWTAIL SUSHI	\$5.5
2 PIECE EEL SUSHI	\$5.5

Asian Diner Menu



2 PIECE TUNA SUSHI	\$5.5	SUSHI AND SASHIMI LUNCH	\$16.0
2 PIECE STRIPED BASS SUSHI	\$4.5		
2 PIECE FLUKE SUSHI	\$4.5		
2 PIECE MACKEREL SUSHI	\$4.5		
2 PIECE SPICY TUNA SUSHI	\$5.0		
8 PIECES SPIDER ROLL	\$10.5		
SHRIMP CUCUMBER ROLL	\$6.0		
SPICY CRAB ROLL	\$6.0		
SUSHI LUNCH	\$12.0		
SASHIMI LUNCH	\$13.0		

Asian Diner

1691 Rt 46, Roxbury Township,
NJ, 07852, LEDGEWOOD,
United States

Opening Hours:

Monday 11:00 -22:00
Tuesday 11:00 -22:00
Wednesday 11:00 -22:00
Thursday 11:00 -22:00
Friday 11:00 -23:00
Saturday 11:00 -23:00
Sunday 12:00 -10:00

Made with menuweb.menu

