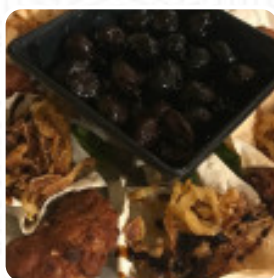




Subway Menu

<https://menuweb.menu>

6217 N Highway 1, Cocoa I-32927-4925, United States
+13216903391



We might have **the menu of Subway** from Cocoa in the gallery. You might find a menu further below.

Subway Menu



Classic Sandwiches

SPICY ITALIAN \$6.4

Turkey

OVEN-ROASTED TURKEY \$7.2

Italian

MEATBALL MARINARA \$6.3

Hot And Cold Subs

PIZZA SUB \$6.5

These Types Of Dishes Are Being Served

ROAST BEEF \$8.4

Footlong Pro®

MEATBALL MARINARA (540 CALS) \$9.6

Salads

GRILLED CHICKEN (130 CALS) \$9.9

VEGGIE DELITE (50 CALS) \$8.3

SWEET ONION CHICKEN TERIYAKI (250 CALS) \$10.0

Drinks

 SPRITE (230 CALS) \$3.4

COCA-COLA CLASSIC (240 CALS) \$3.4

GOLD PEAK SWEET TEA (170 CALS) \$3.4

Ingredients Used

BLACK FOREST HAM \$6.0

OVEN-ROASTED TURKEY HAM \$6.9

TUNA \$7.0

Breakfast

BACON, EGG CHEESE WRAP (860 CALS) \$9.2

EGG CHEESE WRAP (700 CALS) \$8.9

BLACK FOREST HAM, EGG CHEESE WRAP (770 CALS) \$9.2

STEAK, EGG CHEESE WRAP (820 CALS) \$9.4

Chicken

GRILLED CHICKEN \$7.5

SWEET ONION CHICKEN TERIYAKI \$7.6

BUFFALO CHICKEN \$7.6

ROTISSERIE CHICKEN \$7.7

Sandwiches

VEGGIE DELITE \$5.9

B.L.T. \$6.9

BLACK FOREST HAM, EGG CHEESE \$6.3

EGG CHEESE \$6.0

BACON, EGG CHEESE \$6.3

ITALIAN B.M.T. \$7.0

STEAK CHEESE \$7.8

No Bready Bowls™



GRILLED CHICKEN (200 CALS) \$11.6

ROAST BEEF (230 CALS) \$13.0

PIZZA SUB (620 CALS) \$9.9

Subway Menu



OVEN ROASTED TURKEY HAM (160 CALS)	\$10.7
COLD CUT COMBO (260 CALS)	\$9.6
B.L.T. (360 CALS)	\$10.6
BUFFALO CHICKEN (380 CALS)	\$11.7
SWEET ONION CHICKEN TERIYAKI (350 CALS)	\$11.7
ROTISSERIE-STYLE CHICKEN (230 CALS)	\$12.0
BLACK FOREST HAM (170 CALS)	\$9.6
ITALIAN B.M.T. (410 CALS)	\$10.8
OVEN ROASTED TURKEY (150 CALS)	\$10.7
TUNA (550 CALS)	\$10.7
STEAK CHEESE (380 CALS)	\$12.0
SPICY ITALIAN (550 CALS)	\$9.9

Wraps



OVEN ROASTED TURKEY HAM (430 CALS)	\$10.7
BUFFALO CHICKEN (560 CALS)	\$11.7
B.L.T. (620 CALS)	\$10.6
GRILLED CHICKEN (470 CALS)	\$11.6
ITALIAN B.M.T. (680 CALS)	\$10.8
MEATBALL MARINARA (810 CALS)	\$9.6
STEAK CHEESE (570 CALS)	\$12.0
SWEET ONION CHICKEN TERIYAKI (590 CALS)	\$11.7
TUNA (820 CALS)	\$10.7
VEGGIE DELITE (330 CALS)	\$8.4
BLACK FOREST HAM (440 CALS)	\$9.6
COLD CUT COMBO (530 CALS)	\$9.6
PIZZA SUB (720 CALS)	\$9.9
ROAST BEEF (500 CALS)	\$13.0

SPICY ITALIAN (820 CALS)	\$9.9
ROTISSERIE-STYLE CHICKEN (500 CALS)	\$12.0
OVEN ROASTED TURKEY (420 CALS)	\$10.7

Subway® Series



#15 TITAN TURKEY	\$8.0
#3 THE MONSTER	\$8.9
#20 ELITE CHICKEN BACON RANCH	\$8.7
#12 TURKEY CALI CLUB	\$9.4
#23 THE HOTSHOT ITALIANO	\$6.8
#16 ALL-PRO SWEET ONION TERIYAKI	\$7.8
#30 THE BEAST	\$9.5
#2 THE OUTLAW	\$8.2
THE PHILLY	\$8.2
#11 SUBWAY CLUB	\$8.2
#10 ALL-AMERICAN CLUB	\$7.8
#99 GRAND SLAM HAM	\$6.9
#17 GARLIC ROAST BEEF	\$8.8
#18 THE ULTIMATE B.M.T.	\$7.5
#6 THE BOSS	\$7.7
#7 THE MEXICALI	\$8.9
#19 PICKLEBALL CLUB	\$7.5
#33 TERIYAKI BLITZ	\$8.2
#4 SUPREME MEATS	\$8.2

Subway Menu



#8 THE GREAT GARLIC

\$8.7

Subway

6217 N Highway 1, Cocoa I-
32927-4925, United States

Opening Hours:

Tuesday 09:00-21:30
Wednesday 09:00-21:30
Thursday 09:00-21:30
Friday 09:00-21:30
Saturday 09:00-21:30
Sunday 09:00-21:30

Made with menuweb.menu

