

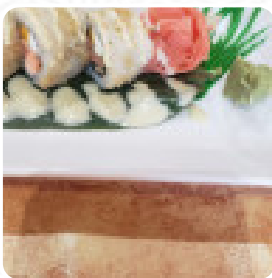


Soulisa's Fine Thai Dining Menu

<https://menuweb.menu>

208 E Rutherford StSC 29356, Landrum, United States

+18644575318 - <http://soulisas.com/>



On this homepage, you will find the **complete menu** of Soulisa's Fine Thai Dining from [Landrum](#). Currently, there are **21** meals and drinks available. In the heart of Landrum, this restaurant offers a culinary journey that delights vegans and non-vegans alike. With a dedicated vegan menu and accommodating staff, diners can explore a variety of flavorful dishes such as the Panang Curry and fresh [sushi](#), all complemented by a warm ambiance. Customers rave about the consistent quality and freshness of the food, likening it to the best Thai and Japanese cuisine they've ever experienced. Despite occasional service hiccups, the exceptional dishes keep patrons returning for more, making it a must-visit destination for food enthusiasts in the area.

Soulisa's Fine Thai Dining Menu



Entrées

SPRING ROLLS

Sushi Rolls

SUSHI

Pizza

FUSION PIZZA

Thai

GREEN CURRY

Indian

CHICKEN CURRY

Curries

PANANG CURRY

Thai Dishes

PAD THAI

Drinks

BEER

DRINKS

Japanese Specialties

SAKE

CHICKEN TERIYAKI

Restaurant Category

VEGETARIAN

VEGAN

Ingredients Used

TOFU

SHRIMP

These Types Of Dishes Are Being Served

MEAT

SOUP

NOODLES

CHICKEN

TUNA STEAK

SALAD

Soulisa's Fine Thai Dining

208 E Rutherford St SC 29356,
Landrum, United States

Opening Hours:

Tuesday 11:00-21:00

Wednesday 11:00-21:00

Thursday 11:00-21:00

Friday 11:00-21:00

Saturday 11:00-21:00

Made with [Menu](#)

