

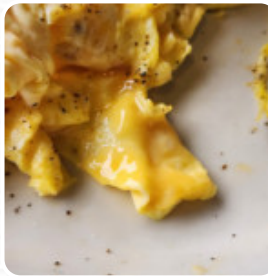
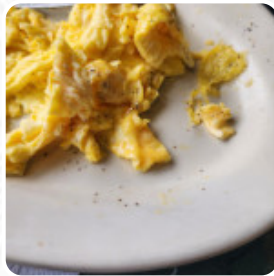


Kelly's Diner Menu

<https://menuweb.menu>

860 Dalton Ave, Pittsfield, United States

+14134421875 - <https://kellysdiner.business.site/>



On this webpage, you will find the **complete [menu](#) of Kelly's Diner** from Pittsfield. Currently, there are **20** dishes and drinks available. Kelly's Diner has quickly become a beloved spot for traditional American breakfasts, where fresh ingredients meet friendly service. Patrons rave about the perfectly cooked eggs, crispy home fries, and delectable bacon, all complemented by hearty coffee served in manageable portions. Staff efficiency adds to the experience, ensuring timely service in a charming, vintage atmosphere. While the establishment predominantly accepts cash, guests appreciate the reasonable prices and generous portions. For those seeking a nostalgic diner vibe with delicious options—from fish sandwiches to corned beef and cabbage—Kelly's is indeed a worthy breakfast destination in the Berkshires.

Kelly's Diner Menu



Pizza

PIZZA TEXAS

Toast

FRENCH TOAST

Fish Dishes

FISH SANDWICH

Starters & Salads

FRENCH FRIES

Fries

HOME FRIES

Brunch

STEAK AND EGGS

Hot Drinks

COFFEE

Restaurant Category

FRENCH

Meat & Ribs

SAUSAGE LINKS

Dessert

CREPES

BLUEBERRY PIE

Ingredients Used

SAUSAGE

BACON

BEEF

CORNED BEEF

These Types Of Dishes Are Being Served

TOSTADAS

TUNA STEAK

PANINI

SANDWICH

FISH

Kelly's Diner

860 Dalton Ave, Pittsfield,
United States

Opening Hours:

Monday 05:30 -13:45 06:00 -13:30

Tuesday 05:30 -13:45 06:00
-13:30

Wednesday 05:30 -13:45

Thursday 05:30 -13:45 06:00
-13:30

Friday 05:30 -13:45 06:00 -13:30

Saturday 06:00 -13:00

Sunday 07:00 -13:00

Made with [Menu](#)

