

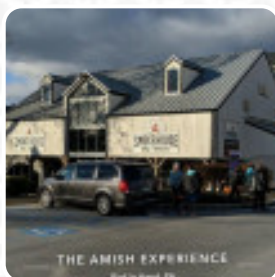
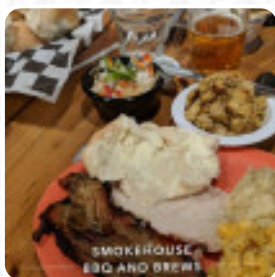


## Plain Fancy Farm Menu

<https://menuweb.menu>

Route 340, Bird In Hand, PA, 17505, BIRD IN HAND, United States

+17177684400,+17177684449 - <https://www.plainandfancyfarm.com/groups-20-more/>



The restaurant from BIRD IN HAND offers **75** different **dishes and drinks** on [the menu](#) at an average price of \$19.3.

# Plain Fancy Farm Menu

## Soups

HOUSE SALAD À LA CARTE \$8.0

## Burger

BBQ PORK

## Antipasti

GRILLED CALAMARI ARRABBIATA \$9.0

## Gnocchi

GNOCCHI

## Side Dishes

MASHED POTATOES

## Drinks

BEER

## Starters & Salads

FRENCH FRIES

## Chicken

FRIED CHICKEN

## Sauces

GRAVY

## Beef Dishes

BRISKET

## Indian

BUTTER CHICKEN

## Noodles

EGG NOODLES

## Main Course

CHICKEN POT PIE

## Al Forno\*

BAKED POTATOES

## Main

PULLED PORK

## Mocktails

FRENCH KISS \$6.0

## Coffee

HOT NUTTY IRISHMAN \$7.0

## Coffee Drinks

CAMERON COFFEE \$7.0

## Savory

HOUSE CURED SALMON \$10.0

## Burgers, Sandwiches & Main Plates

SMOKED PORK TENDERLOIN \$27.0

## Mexican-American Food

EMPANADAS

## Starters Or Snacks

BRIE AND PEAR QUESADILLA \$8.0

# Plain Fancy Farm Menu

## Restaurant Category

### DESSERT

## Entrées

FOIE GRAS AU CHOCOLAT	\$16.0
MUSHROOM FONTINA STRUDEL	\$8.0

## Dessert

VANILLA ICE CREAM
APPLE PIE

## From The Grill

BBQ RIBS
RIBS

## Vegetarian Entrees

MOROCCAN GARBANZO STEW	\$24.0
FETTUCCINE TAPENADE	\$24.0

## Pasta

CHEESE TORTELLINI ALFREDO	\$24.0
CHICKEN PORTOBELLO PENNE	\$28.0
SCALLOP AGLIO E OLIO	\$34.0
ITALIAN SAUSAGE AND BEEF TIPS VENETIAN	\$28.0
MUSSELS IN SAFFRON CREAM SAUCE	\$14.0

## Salads

COLESLAW	
HOUSE SALAD	\$12.0
GRILLED CAESAR SALAD A LA CARTE	\$8.0
GRILLED CAESAR SALAD	\$12.0

ARUGULA AND CARAMELIZED PEAR SALAD A LA CARE	\$8.0
ARUGULA AND CARAMELIZED PEAR SALAD	\$12.0
SPINACH AND BACON SALAD A LA CARTE	\$8.0
SPINACH AND BACON SALAD	\$12.0

## Starters

MARINATED PETITE TENDER OF BEEF	\$29.0
FILET OF BEEF AND CRAB CAKE	\$39.0
WASABI-GINGER AHI TUNA	\$29.0
HONEY-LAVENDER ROCK CORNISH HEN	\$28.0
ROASTED LONG ISLAND DUCK	\$39.0
LAMB PORTERHOUSE STEAK	\$32.0
SALMON WITH BACON JAM	\$30.0
DUAL JUMBO LUMP CRAB CAKES	\$30.0
TILAPIA TAPENADE	\$26.0

## Ingredients Used

SAUSAGE
BEANS
BUTTER
POTATOES
BEEF BRISKET
CORN
VEGETABLES
BEEF
HAM
CHEESE
PORK MEAT

# Plain Fancy Farm Menu

## These Types Of Dishes Are Being Served

PANINI

SALAD

ROASTED CHICKEN

PASTA

NOODLES

ROAST BEEF

SOUP

ICE CREAM

CHICKEN

MEAT

TURKEY

---

## Plain Fancy Farm

Route 340, Bird In Hand, PA,  
17505, BIRD IN HAND, United  
States

### Opening Hours:

Monday 11:30-20:00  
Tuesday 11:30-20:00  
Wednesday 11:30-20:00  
Thursday 11:30-20:00  
Friday 11:30-21:00  
Saturday 11:30-21:00  
Sunday 11:30-20:00

Made with [Menu](#)

