

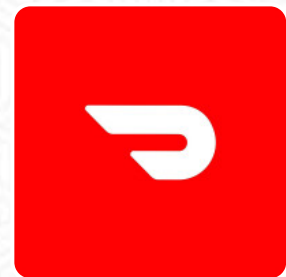
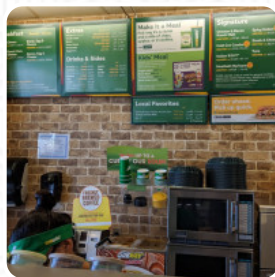


Subway Menu

<https://menuweb.menu>

1503 N Park Dr, Winslow, United States

+19282895758 - <https://restaurants.subway.com/united-states/az/winslow/1503-north-park-dr>



The restaurant from Winslow offers **106** different **dishes and drinks on [the menu](#)** at an average price of \$10.7. Discover Subway in [Winslow](#), AZ, a beloved American eatery featuring a solid average rating of 3.6 stars. Join us today from 8:00 AM to 10:00 PM and savor your favorite sandwiches and salads. Whether you're dining with a companion or hosting a larger gathering, feel free to call us at (928) 289-5758 to reserve your table. For those who prefer to enjoy their meal at home, we offer convenient ordering through DoorDash. We're also proud to provide a variety of vegetarian options to cater to all tastes. Don't forget to share your dining experience with us and leave a review! Looking for other delicious choices? Check out the offerings at Taco Bell and Long John Silver's!.

Subway Menu



Side Dishes

SUNCHIPS PARMESAN HERB SNACKS

Classic Sandwiches

SPICY ITALIAN \$7.7

Turkey

OVEN-ROASTED TURKEY \$8.4

Hot Drinks

COFFEE

Italian

MEATBALL MARINARA \$7.5

Vegetarian Dish

VEGGIE PATTY \$8.7

Signature Wraps

TURKEY BREAST BLACK FOREST HAM

Weekday Lunch Trio

CHIPS OR CRISPS

Sides

DOUBLE MEAT

Fresh Fit Choices

OVEN ROASTED CHICKEN

Footlong Pro®

MEATBALL MARINARA (540 CALS) \$11.6

Dessert

COOKIES

YOGURT PARFAIT

Soft Drinks

JUICE

FRESH BREWED ICED TEA

All Sandwiches

CHICKEN PIZZIOLA MELT

MEATBALL PEPPERONI MELT

Salads

STEAK CHEESE (210 CALS) \$11.7

OVEN ROASTED TURKEY (110 CALS) \$10.8

BLACK FOREST HAM (120 CALS) \$10.0

These Types Of Dishes Are Being Served

PANINI

ROAST BEEF \$10.2

BREAD

Drinks

COCA-COLA CLASSIC (240 CALS) \$3.5

SPRITE (230 CALS) \$3.5

VITAMIN WATER XXX (80 CALS) \$3.5

BOTTLED DRINKS

Chicken

ROTISSERIE CHICKEN \$9.3

SWEET ONION CHICKEN TERIYAKI \$9.0

Subway Menu



BUFFALO CHICKEN	\$8.9
GRILLED CHICKEN	\$10.2
CHICKEN PARMESAN	

Breakfast

BLACK FOREST HAM, EGG CHEESE WRAP (770 CALS)	\$10.8
STEAK, EGG CHEESE WRAP (820 CALS)	\$11.3
BACON, EGG CHEESE WRAP (860 CALS)	\$10.8
EGG CHEESE WRAP (700 CALS)	\$10.8
BREAKFAST B.M.T. MELT	
SUNRISE SUBWAY MELT	

Ingredients Used

BLACK FOREST HAM	\$7.6
TUNA	\$8.4
OVEN-ROASTED TURKEY HAM	\$8.4
APPLE SLICES	
CHEESE	
BACON	
MILK	

Sandwiches

ITALIAN B.M.T.	\$8.4
STEAK CHEESE	\$9.3
VEGGIE DELITE	\$6.9
B.L.T.	\$8.4
BLACK FOREST HAM, EGG CHEESE	\$7.2
BACON, EGG CHEESE	\$7.2
EGG CHEESE	\$7.2
SUBWAY MELT	

THE BIG PHILLY CHEESESTEAK

No Bready Bowls™

SPICY ITALIAN (550 CALS)	\$11.9
SWEET ONION CHICKEN TERIYAKI (350 CALS)	\$14.2
BLACK FOREST HAM (170 CALS)	\$11.7
BUFFALO CHICKEN (380 CALS)	\$13.8
B.L.T. (360 CALS)	\$13.0
COLD CUT COMBO (260 CALS)	\$11.6
GRILLED CHICKEN (200 CALS)	\$16.2
ITALIAN B.M.T. (410 CALS)	\$13.0
OVEN ROASTED TURKEY (150 CALS)	\$13.0
OVEN ROASTED TURKEY HAM (160 CALS)	\$13.0
ROTISSERIE-STYLE CHICKEN (230 CALS)	\$14.4
STEAK CHEESE (380 CALS)	\$14.4
TUNA (550 CALS)	\$13.0
ROAST BEEF (230 CALS)	\$15.9
VEGGIE PATTY (380 CALS)	\$13.2

Wraps

STEAK CHEESE (570 CALS)	\$14.4
B.L.T. (620 CALS)	\$13.0
BUFFALO CHICKEN (560 CALS)	\$13.8
BLACK FOREST HAM (440 CALS)	\$11.7
COLD CUT COMBO (530 CALS)	\$11.6
ITALIAN B.M.T. (680 CALS)	\$13.0
MEATBALL MARINARA (810 CALS)	\$11.6
OVEN ROASTED TURKEY (420 CALS)	\$13.0
OVEN ROASTED TURKEY HAM (430 CALS)	\$13.0

Subway Menu



ROAST BEEF (500 CALS)	\$15.9
ROTISSERIE-STYLE CHICKEN (500 CALS)	\$14.4
SPICY ITALIAN (820 CALS)	\$11.9
SWEET ONION CHICKEN TERIYAKI (590 CALS)	\$14.2
TUNA (820 CALS)	\$13.0
VEGGIE PATTY (660 CALS)	\$13.2
GRILLED CHICKEN (470 CALS)	\$16.2
VEGGIE DELITE (330 CALS)	\$10.2

#23 THE HOTSHOT ITALIANO	\$8.3
--------------------------	-------

Subway® Series

#20 ELITE CHICKEN BACON RANCH	\$10.2
#10 ALL-AMERICAN CLUB	\$9.3
#3 THE MONSTER	\$10.7
#30 THE BEAST	\$10.8
#11 SUBWAY CLUB	\$9.6
#6 THE BOSS	\$9.2
#16 ALL-PRO SWEET ONION TERIYAKI	\$9.6
THE PHILLY	\$9.9
#7 THE MEXICALI	\$10.6
#15 TITAN TURKEY	\$9.2
#33 TERIYAKI BLITZ	\$9.9
#2 THE OUTLAW	\$9.9
#18 THE ULTIMATE B.M.T.	\$9.0
#4 SUPREME MEATS	\$9.9
#99 GRAND SLAM HAM	\$8.4
#17 GARLIC ROAST BEEF	\$10.6
#8 THE GREAT GARLIC	\$10.2
#19 PICKLEBALL CLUB	\$9.0
#12 TURKEY CALI CLUB	\$11.2

Subway Menu



Subway

1503 N Park Dr, Winslow, United States

Opening Hours:

Monday 10:00-21:30
Tuesday 07:00-21:30
Wednesday 07:00-21:30
Thursday 07:00-21:30
Friday 07:00-21:30
Saturday 07:00-21:30
Sunday 08:00-21:30

Made with [Menu](#)

