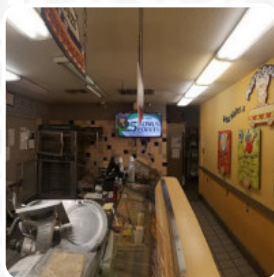


## Port Of Subs Menu

<https://menuweb.menu>

2747 Manning Avenue, Fowler, CA 93625, United States

+15598349874 - <http://www.portofsubs.com/>



The restaurant from [Fowler](#) offers **114** different dishes and drinks on [the menu](#) for an average price of \$7.5.

# Port Of Subs Menu



## Non Alcoholic Drinks

BOTTLED WATER \$2.0

## Entrées

ITALIAN WRAP \$6.5

## Extras

SALT VINEGAR CHIPS

## Snacks

JALAPENO CHIPS

## Breakfast

SMOKED HAM, EGG CHEESE

## Starters & Salads

POTATO CHIPS \$1.4

## Chips

SUNCHIPS ORIGINAL

## Kids Menu

KIDS SALAMI SUB \$6.0

## Kids Meal

KIDS MEAL

## Hot Specialty Subs

TURKEY BACON RANCH

## Signature Wraps

TURKEY BACON RANCH WRAP \$9.0

## Just For Kids

KIDS GRILLED CHEESE \$6.0

## Softs & Mixers

FRUIT JUICE

## Kid&Apos;S Menu

HAM AND AMERICAN CHEESE WRAP \$6.5

## Breakfast Grillers

PEPPERED BACON, EGG CHEESE

## Side Orders &Amp;Amp; Additions

BAG OF PEPPERONCINI

## Pita Wrap Combos

VEGETARIAN WRAP COMBO \$10.8

## Restaurant Category

ITALIAN

## Side Orders - Chips

ORIGINAL BAKED LAYS CHIPS

## Dessert

BROWNIE \$2.6

COOKIE \$2.6

## Wrap

VEGETARIAN WRAP \$6.5

THE ITALIAN WRAP

# Port Of Subs Menu



## Subs

TURKEY-PROVOLONE

SALAMI-PROVOLONE

## Kids Meals

KIDS HAM SUB \$6.0

KIDS TURKEY SUB \$6.0

## These Types Of Dishes Are Being Served

PANINI

MEAT

## Beverages

BOTTLED SODA \$2.1

LRG. FOUNTAIN DRINK

MED. FOUNTAIN DRINK

## Ingredients Used

CHEESE

PROVOLONE

TUNA

## Side Dishes

WHOLE DILL PICKLE

BBQ CHIPS

SOUR CREAM ONION CHIPS

SUNCHIPS CHEDDAR

NACHO CHEESIER DORITOS

## Grillers

ALBACORE TUNA MELT GRILLER

MEATBALL GRILLER

GRILLED CHICKEN GRILLER

HOT PASTRAMI GRILLER

NY STEAK CHEESE GRILLER

BBQ PULLED PORK GRILLER

## Desserts

1 COOKIE: CHOCOLATE CHIP

2 COOKIES: CHOCOLATE CHIP

1 COOKIE: OATMEAL

2 COOKIES: OATMEAL

1 COOKIE: WHITE CHOCOLATE  
MACADEMIA

2 COOKIES: WHITE CHOCOLATE  
MACADEMIA

## Salads



GARDEN SALAD \$6.0

CAESAR SALAD \$6.0

GRILLED CHICKEN  
SALAD \$9.0

GRILLED CHICKEN CAESAR SALAD \$9.0

TUNA SALAD \$9.0

CHEF SALAD \$9.0

SPINACH SALAD \$6.0

MACARONI SALAD \$2.5

POTATO SALAD \$2.5

GRILLED CHICKEN CAESAR

## Sandwiches



TUNA LETTUCE WRAP \$6.5

HAM-SALAMI-CAPICOLLA-  
PEPPERONI-PROVOLONE

HAM-TURKEY-PROVOLONE

SALAMI-TURKEY-PROVOLONE

# Port Of Subs Menu



HAM-SALAMI-PROVOLONE  
SMOKED HAM-TURKEY-SMOKEY  
CHEDDAR  
VEGETARIAN (COMBINATION OF ANY 3  
CHEESES AND AVOCADO)  
ROAST BEEF-PROVOLONE  
PEPPERED PASTRAMI-SWISS  
ROASTED CHICKEN BREAST-  
PROVOLONE  
HAM-AMERICAN CHEESE  
PEPPERED PASTRAMI-TURKEY-SWISS  
SMOKED HAM-SWISS  
SALAMI-PEPPERONI-PROVOLONE  
BLT (CHOICE OF CHEESE)  
TUNA (CHOICE OF CHEESE)  
ROAST BEEF-TURKEY-PROVOLONE  
ITALIAN GRILLER  
SAUSAGE, EGG CHEESE  
TUNA SANDWICH

## Wraps



ITALIAN WRAP COMBO \$10.8  
HAM, TURKEY AND  
PROVOLONE CHEESE WRAP \$6.5  
HAM, TURKEY AND PROVOLONE  
CHEESE WRAP COMBO \$10.8  
SALAMI, TURKEY AND  
PROVOLONE CHEESE WRAP \$6.5  
SALAMI, TURKEY AND  
PROVOLONE CHEESE WRAP  
COMBO \$10.8  
HAM, SALAMI AND PROVOLONE  
CHEESE WRAP \$6.5  
HAM, SALAMI AND PROVOLONE  
CHEESE WRAP COMBO \$10.8

SMOKED HAM, TURKEY AND  
SMOKEY CHEDDAR CHEESE WRAP \$6.5  
SMOKED HAM, TURKEY AND  
SMOKEY CHEDDAR CHEESE  
WRAP COMBO \$10.8  
ROAST BEEF AND PROVOLONE  
CHEESE WRAP \$6.5  
ROAST BEEF AND PROVOLONE  
CHEESE WRAP COMBO \$10.8  
TURKEY AND PROVOLONE  
CHEESE WRAP \$6.5  
TURKEY AND PROVOLONE  
CHEESE WRAP COMBO \$10.8  
PEPPERED PASTRAMI AND SWISS  
CHEESE WRAP \$6.5  
PEPPERED PASTRAMI AND SWISS  
CHEESE WRAP COMBO \$10.8  
ROASTED CHICKEN BREAST AND  
PROVOLONE CHEESE WRAP \$6.5  
ROASTED CHICKEN BREAST AND  
PROVOLONE CHEESE WRAP  
COMBO \$10.8  
HAM AND AMERICAN CHEESE  
WRAP COMBO \$10.8  
SALAMI AND PROVOLONE CHEESE  
WRAP \$6.5  
SALAMI AND PROVOLONE  
CHEESE WRAP COMBO \$10.8  
PEPPERED PASTRAMI, TURKEY  
AND SWISS CHEESE WRAP \$6.5  
PEPPERED PASTRAMI, TURKEY  
AND SWISS CHEESE WRAP  
COMBO \$10.8  
SMOKED HAM AND SWISS WRAP \$6.5  
SMOKED HAM AND SWISS WRAP  
COMBO \$10.8  
SALAMI, PEPPERONI AND  
PROVOLONE CHEESE WRAP \$6.5  
SALAMI, PEPPERONI AND  
PROVOLONE CHEESE WRAP  
COMBO \$10.8

# Port Of Subs Menu



BLT WRAP	\$6.5	ROAST BEEF, TURKEY AND PROVOLONE CHEESE WRAP COMBO	\$10.8
BLT WRAP COMBO	\$10.8		
TUNA WRAP LETTUCE COMBO	\$10.8	GRILLED CHICKEN CAESAR WRAP	\$9.0
ROAST BEEF, TURKEY AND PROVOLONE CHEESE WRAP	\$6.5		

## Port Of Subs

2747 Manning Avenue, Fowler,  
CA 93625, United States

**Opening Hours:**  
Monday 06:00-20:30  
Tuesday 06:00-20:30  
Wednesday 06:00-20:30  
Thursday 06:00-20:30  
Friday 06:00-20:30  
Saturday 06:00-16:30

Made with [Menu](#)

