

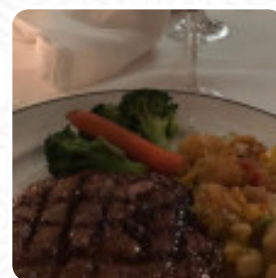
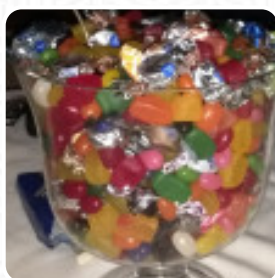


Shakespeare's Fine Dining Menu

<https://menuweb.menu>

181 Main St E, Hamilton, ON L8N 1H2, Canada

+19055280689 - <http://www.shakespeares.ca/>



A **comprehensive [menu](#) of Shakespeare's Fine Dining** from Hamilton featuring all **56** meals and drinks can be found here on the menu. Shakespeare's restaurant in downtown [Hamilton](#) has received mixed reviews from diners. Some have complained about rushed service, subpar food quality, and high prices, while others have praised the excellent service, delicious food, and old-school ambiance. Despite some negative feedback, many diners have enjoyed their meals at Shakespeare's, with highlights including perfectly cooked steaks, fresh oysters, and a gourmet burger. The restaurant seems to be a popular choice for special occasions and family gatherings, offering a unique dining experience in the heart of the city.

Shakespeare's Fine Dining Menu



Entrées

GARLIC BREAD

Pizza

SPECIAL PIZZA

Drinks

DRINKS

Beef Dishes

FILET MIGNON

Baked Potatoes

BAKED POTATO

Seafood

LOBSTER TAIL

Warme Getränke

CAPPUCINO

Bread

GARLIC BREAD

Starches

RICE PILAF

French

FRENCH ONION SOUP

Main Courses And Sides

GARLIC MASHED POTATOES

Salads

CAPRESE SALAD

CAPRESE

Dessert

CHOCOLATE MOUSSE

CHEESE CAKE

Side Dishes

PICKLES

MASHED POTATOES

BAKED POTATO

Chicken

BUFFALO CHICKEN

CHICKEN PARM

OLIVES CHICKEN

Restaurant Category

FRENCH

DESSERT

STEAKHOUSE

BAR

These Types Of Dishes Are Being Served



OYSTERS

MEAT

BREAD

BURGER

LOBSTER

SALAD

Shakespeare's Fine Dining Menu



CHICKEN

ICE CREAM

SOUP

FISH

APPETIZER

DESSERTS

TUNA STEAK

SEAFOOD

HALIBUT

FETA

SCALLOPS

ONION

PICKLE

BEEF

SHRIMP

CHEESE

BUTTER

BACON

OLIVES

SALMON

Ingredients Used



FRENCH ONION

SHRIMP

GARLIC

POTATOES

CHOCOLATE

Shakespeare's Fine Dining

181 Main St E, Hamilton, ON L8N
1H2, Canada

Opening Hours:

Wednesday 12:00 -21:30

Thursday 12:00 -21:30

Friday 12:00 -21:30

Saturday 05:00 -21:30

Made with [Menu](#)

