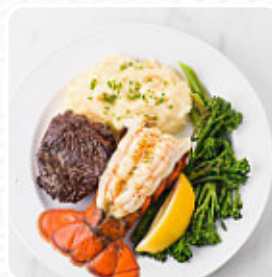
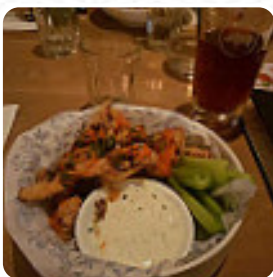




Earls Menu

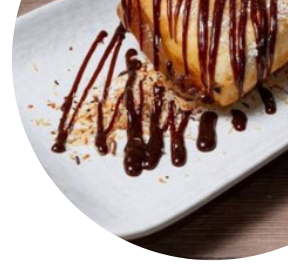
<https://menuweb.menu>

4295 Blackcomb Way | Whistler Village, Whistler, British Columbia V0N 1B4, Canada
+16049353222 - <http://earls.ca/locations/whistler-village>



The place from Whistler offers **156** different **courses and drinks on [the menu](#)** at an average price of CA\$44. Earls in Whistler offers an upscale, premium-casual dining experience with a Global Skillet of the finest dishes, original cocktails, and a selection of wine and beer from around the world. Our service team are friendly and dedicated, creating magical dining experiences for our guests. Our menu is designed to satisfy any craving your group may have.

Christine's On Blackcomb Menu



Alcoholic Drinks

RIESLING

Pizza

SPECIAL PIZZA

Side Dishes

TATER TOTS

Sandwiches

GRILLED CHEESE

Drinks

DRINKS

Starters & Salads

FRENCH FRIES

Chicken

CHICKEN STRIPS

Antipasti - Starters

CARPACCIO

From The Grill

RIBS

Indian

CHICKEN CURRY

Milkshakes

MILK SHAKES

Modifiers

BARBECUE SAUCE

Sauces

SAUCE

Restaurant Category

BARBECUE

DESSERT

BAR

These Types Of Dishes Are Being Served



CHICKEN

ICE CREAM

BREAD

PANINI

FISH

PASTA

BURGER

SALAD

Ingredients Used



PORK MEAT

SCALLOPS

TUNA

SALMON

BEEF

BACON

DUCK

CHEESE

SCALLOP

Christine's On Blackcomb Menu



KALE

CORN

Christine's On Blackcomb

4545 Blackcomb Way, Whistler,
British Columbia V0N 1B4,
Canada

Opening Hours:

Monday 11:00 - 23:00
Tuesday 11:00 - 23:00
Wednesday 11:00 - 23:00
Thursday 11:00 - 23:00
Friday 11:00 - 23:00
Saturday 11:00 - 23:00
Sunday 11:00 - 23:00

Made with [Menu](#)

