

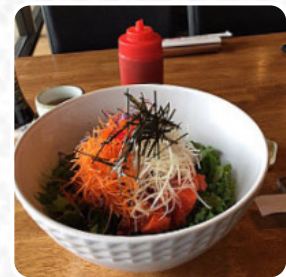


## Seh-Mi Japanese Restaurant Menu

<https://menuweb.menu>

115-20151 Fraser Hwy, Langley City, British Columbia V3A 4E4, Canada

+16045343662 - <http://www.seh-mi.com>



On this webpage, you will find the **complete [menu](#) of Seh-Mi Japanese Restaurant** from Langley. Currently, there are **24** meals and drinks available. Seh-Mi Restaurant is a terrific spot for sushi, offering an extensive and varied menu with fresh dishes. The service is exceptional, making it a favorite spot for many to satisfy [sushi](#) cravings. The prices are reasonable, portions are generous. The atmosphere is cheerful and clean, and the staff are friendly and quick to serve. Recommendations include the Crispy Salmon Roll, lunch tray for big appetites, and the Bento Box specials. be prepared for a busy environment around peak hours, and consider making a reservation for larger groups. Overall, a highly recommended dining experience at Seh-Mi.

# Seh-Mi Japanese Restaurant Menu



## Entrées

AGEDASHI TOFU

## Vegetarian

SPINACH TART

## Sandwiches

CALIFORNIA SANDWICH

## Seafood

SHRIMP TEMPURA

## Appetizer

TEMPURA

## Homemade Sauces

PEANUT SAUCE

## Fish

SALMON ROLL

## Appetizers

VEGETABLE ROLL

## Energy Drinks

MONSTER

## Sushi Bar Entrees

CHIRASHI

## Sauces

SAUCE

## These Types Of Dishes Are Being Served

FISH

## Sushi Rolls

SUSHI

SHRIMP TEMPURA ROLL

## Sushi

SASHIMI

CALIFORNIA ROLL

## Sauces

PEANUT SAUCE

HOT SAUCE

## Ingredients Used

SHRIMP

TOFU

LETTUCE

SPINACH

VEGETABLES

CUCUMBER

# Seh-Mi Japanese Restaurant Menu



## Seh-Mi Japanese Restaurant

115-20151 Fraser Hwy, Langley  
City, British Columbia V3A 4E4,  
Canada

### Opening Hours:

Monday 11:00 - 22:00  
Tuesday 11:00 - 22:00  
Wednesday 11:00 - 22:00  
Thursday 11:00 - 23:00  
Friday 11:00 - 23:00  
Saturday 11:00 - 23:00  
Sunday 11:00 - 23:00

Made with [Menu](#)

