

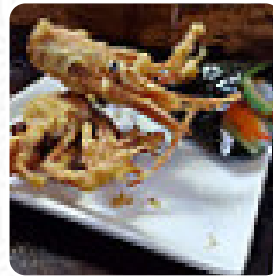


Sushi Circle Menu

<https://menuweb.menu>

914 Woodland St, 37206, Nashville, US, United States

+16156787475



The *menu of Sushi Circle* from Nashville includes **17** menus. On average, **menus or drinks on [the card](#)** cost about \$14.5. The categories can be viewed on the menu below. Nestled in a cozy corner of East Nashville, this charming mom-and-pop sushi spot has become a local favorite, thanks to its delightful atmosphere and warm service. Though opinions on the fish quality vary, many patrons appreciate the expertly crafted rolls, praising dishes like the spicy tuna roll and the unique crispy gyoza Nashville roll. With reasonable prices and a BYOB option, it strikes a balance between casual dining and quality [sushi](#). While it may not be perfect — with minor issues like cramped space and inconsistent freshness — the overall experience is enhanced by the welcoming presence of the Lee family, inviting guests back for more.

Sushi Circle Menu



Salads

SEAWEED SALAD \$4.5

Sashimi

SASHIMI DELUXE \$21.0

Sushi

SPICY TUNA ROLL

Starters

YELLOW TAIL SASHIMI \$21.0

Sashimi Selection

SALMON SASHIMI \$18.0

Sashimi & Sushi

SASHIMI SPECIAL \$40.0

Sushi & Sashimi A La Carte

SALMON (SAKE) \$5.3

Sushi / Sashimi Alacarte

EEL (UNGAI) \$7.0

Sides

SOY SAUCE

These Types Of Dishes Are Being Served

SPICY TUNA

FISH

Sushi Rolls

RAINBOW ROLL \$13.0

SPIDER ROLL \$10.0

SUSHI

Ingredients Used

TUNA

MISO

TOFU \$5.0

Sushi Circle

914 Woodland St, 37206,
Nashville, US, United States

Opening Hours:

Made with menuweb.menu

