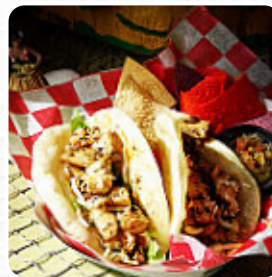
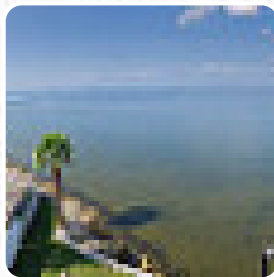




Big Bamboo Bayside Menu

<https://menuweb.menu>

2506 N Rocky Point Dr, 33607, Tampa, US, United States
(+1)8138032207 - <http://www.bigbamboobayside.com/>



Here you can find the [menu](#) of **Big Bamboo Bayside** in Tampa. At the moment, there are **25** courses and drinks on the card. Nestled within the Sailport Hotel property, this poolside cafe has emerged as a popular hidden gem, captivating locals and visitors alike. With a vibrant atmosphere and exceptional staff, the venue offers a delightful selection of food and drinks, including standout dishes like Caribbean jerk tacos, conch fritters, and hearty breakfast options. Guests can enjoy breathtaking views of the bay while savouring well-crafted cocktails, particularly the famed Pink Flamingo. Despite limited access to the pool area, the welcoming vibe and attentive service make it a must-visit spot for anyone looking to unwind and indulge in a memorable dining experience.

Big Bamboo Bayside Menu



Non Alcoholic Drinks

WATER

Drinks

DRINKS

Chicken

JERK CHICKEN

Dessert

CREPES

Hot Drinks

COFFEE

Bread

BAGEL

Sweets & Desserts

FRUIT CUP

Restaurant Category

TROPICAL

Starters & Salads

FRENCH FRIES

POTATO CHIPS

Sauces

SALSA

GUACAMOLE

Ingredients Used

FRUIT

BACON

Sandwiches



BREAKFAST SANDWICH

STEAK SANDWICH

PHILLY STEAK

Mexican Dishes

TACOS

BURRITO

BREAKFAST BURRITO

These Types Of Dishes Are Being Served

BURGER

PANINI

TUNA STEAK

CHICKEN

SANDWICH

Big Bamboo Bayside Menu



Big Bamboo Bayside

2506 N Rocky Point Dr, 33607,
Tampa, US, United States

Opening Hours:

Monday 08:30 -22:00
Tuesday 08:30 -22:00
Wednesday 08:30 -22:00
Thursday 08:30 -22:00
Friday 08:30 -22:00
Saturday 08:30 -22:00
Sunday 08:30 -22:00

Made with menuweb.menu

