

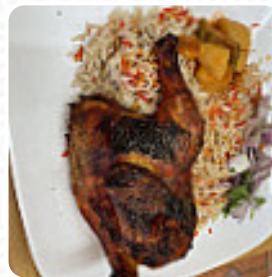


Queen Of Sheba Menu

<https://menuweb.menu>

3314 Eastern Ave, 21224, Baltimore, US, United States

(+1)4438859585 - <https://mymozo.com/myrestaurant/default>



The place from Baltimore offers **23** different **dishes and drinks on [the card](#)** at an average \$11.1. Nestled on a quiet street, Queen of Sheba delights diners with its extensive Middle Eastern menu and cozy atmosphere. Diners rave about the tender lamb and chicken haneeth, complemented by fresh salads and addictive hummus.

The vibrant flavors and authenticity have garnered praise, with standout dishes like the heavenly mango smoothie. Service is efficient, with friendly staff, ensuring a pleasant experience. While some find certain dishes lacking in flavor, the overall consensus favors quality ingredients and robust taste. Perfect for groups eager to explore new culinary frontiers, this restaurant is a must-visit for Middle Eastern cuisine enthusiasts.

Queen Of Sheba Menu



Sandwiches

LIVER SUB \$8.0

Breakfast

MEAT CHUNKS \$12.0

Starters

LAMB WITH GRAVY \$18.0

Poultry

FAHSAH FISH \$13.0

Subs

CHICKEN SUB \$6.0

Bread

PITA

Popular Items

LAMB HANEETH \$18.0

Authentic Dishes

LAMB FAHSAH \$11.0

Salads And Side Orders

PITA BREAD

Condiments And Sauces

HUMMUS

Restaurant Category

MEDITERRANEAN

Ingredients Used

MANGO

Smoothies

SMOOTHIE

MANGO SMOOTHIE

Entrées

LAMB LIVER \$11.0

BABA GHANOUJ \$7.0

FATTOUSH SALAD \$7.0

These Types Of Dishes Are Being Served

MEAT

BREAD

SOUP

SALAD

CHICKEN

LAMB

Queen Of Sheba Menu



Queen Of Sheba

3314 Eastern Ave, 21224,
Baltimore, US, United States

Opening Hours:

Monday 10:00 -22:00
Tuesday 10:00 -22:00
Wednesday 10:00 -22:00
Thursday 10:00 -22:00
Friday 10:00 -22:00
Saturday 10:00 -22:00
Sunday 10:00 -22:00

Made with menuweb.menu

