

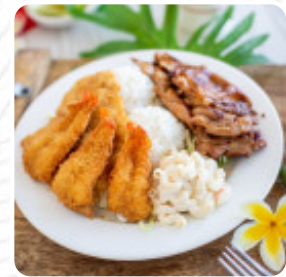


L&L Hawaiian Barbecue Menu

<https://menuweb.menu>

339 N State College Blvd, Fullerton, CA 92831, United States

+17148708888 - <https://www.hawaiianbarbecue.com/locations/fullerton/>



The Menu of **L&L Hawaiian Barbecue from Fullerton** includes about **15** different dishes and drinks. On average, you pay for a dish / drink about \$6.3. L&L Hawaiian Barbecue in Fullerton, CA is a popular American restaurant with an average rating of 4.1 stars. Visit us and enjoy our delicious menu items from 10:30 AM to 9:00 PM. Avoid the crowds by calling ahead to book your table at (714) 870 8888. You can also order your favorite dishes from L&L Hawaiian Barbecue through Uber Eats or DoorDash for a meal at home. If you're looking to explore new dining options, consider trying SoCal Wings Fullerton and BIGS Fullerton. Leave a review if you've dined with us before!.

L&I Hawaiian Barbecue Menu



Entrées

FRIED SHRIMP

Burger

22. HAMBURGER \$5.0

Sandwiches

23. CHEESEBURGER \$5.0

Sauces

BBQ

Chicken Dishes

BBQ CHICKEN

Ingredients Used

SHRIMP

These Types Of Dishes

Are Being Served

CHICKEN

Salad

45. GARDEN FRESH SALAD \$6.3

46. BBQ CHICKEN SALAD \$8.3

Musubi

41. SPAM MUSUBI \$2.5

42. BBQ CHICKEN MUSUBI \$2.5

Chicken Lunch Plate

14. MINI BBQ CHICKEN PLATE LUNCH \$9.0

14. REGULAR BBQ CHICKEN PLATE LUNCH \$11.0

Hawaiian Bowls

59. CHICKEN CURRY BOWL \$6.0

60. BBQ CHICKEN BOWL \$7.5

L&I Hawaiian Barbecue

339 N State College Blvd,
Fullerton, CA 92831, United
States

Opening Hours:

Monday 10:30 -21:00
Tuesday 10:30 -21:00
Wednesday 10:30 -21:00
Thursday 10:30 -21:00
Friday 10:30 -21:00
Saturday 10:30 -21:00
Sunday 11:30 -21:00

Made with menuweb.menu

