

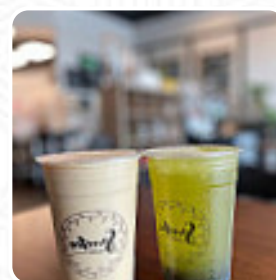
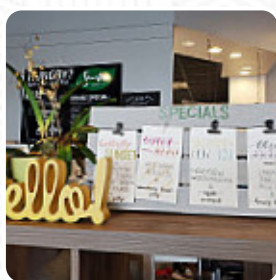


Sweetea Cafe Menu

<https://menuweb.menu>

25704 Sierra Center Blvd, 33559, Lutz, US, United States

+18134065961 - <https://sweeteafl.com>



Here you can find the [menu](#) of **Sweetea Cafe** in Lutz. At the moment, there are **18** courses and drinks on the menu. Sweetea Cafe captures patrons with its vibrant ambiance and exceptional drink selection. Diners rave about the signature boba and invigorating options like Mango For It and Vietnamese iced coffee, highlighting the cafe's commitment to flavor. While the service can occasionally lag, the friendly staff makes up for it with helpfulness and in-depth menu knowledge. Vegan options are plentiful, though attention to detail in preparation is essential. With delicious snacks alongside an inviting atmosphere, Sweetea Cafe emerges as a must-visit spot for anyone seeking quality refreshments and a warm, community-driven experience.

Sweetea Cafe Menu



Entrées

SPRING ROLLS

Sandwiches

EGG ROLLS

Side Dishes

RICE

Drinks

DRINKS

Main Course

VEGGIE SPRING ROLL

Coffee

ICED COFFEE

Asian

SPRING ROLL

Restaurant Category

VEGAN

Hot Drinks

TEA

COFFEE

MILK TEA

These Types Of Dishes Are Being Served

MEAT

SANDWICH

PANINI

Ingredients Used

EGG

MILK

MANGO

TOFU

Sweetea Cafe

25704 Sierra Center Blvd, 33559,
Lutz, US, United States

Opening Hours:

Tuesday 11:00 -20:00
Wednesday 11:00 -20:00
Thursday 11:00 -20:00
Friday 11:00 -20:00
Saturday 11:00 -20:00
Sunday 11:00 -19:00

Made with [menuweb.menu](https://www.menuweb.menu)

