

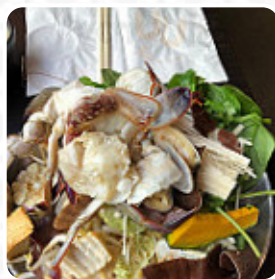
SHABUYA



Shabuya Menu

<https://menuweb.menu>

1450 Ala Moana Blvd, Honolulu I-96814-4604, United States
(+1)8086384886 - <https://www.shabuyarestaurant.com>



Here you can find the [menu](#) of **Shabuya** in Honolulu. At the moment, there are **17** menus and drinks on the food list. SHABUYA in Honolulu, HI, is a highly rated Japanese restaurant open from 11:00 AM to 10:00 PM. Visit for a variety of delicious dishes, including vegetarian options. For reservations or to check availability, call: (808) 638-4886. Explore other nearby dining options like The Alley and Starbucks. Share your dining experience with a review!.

Shabuya Menu



Non Alcoholic Drinks

WATER

Pizza

FUSION PIZZA

Drinks

DRINKS

Toppings

TOPPINGS

These Types Of Dishes Are Being Served

CHICKEN

APPETIZER

NOODLES

MEAT

SOUP

Ingredients Used



VEGETABLES

SEAFOOD

SHRIMP

TOFU

MUSHROOMS

WATERMELON

LYCHEE

MISO

Shabuya

1450 Ala Moana Blvd, Honolulu I-
96814-4604, United States

Opening Hours:

Monday 11:00-22:00
Tuesday 11:00-22:00
Wednesday 11:00-22:00
Thursday 11:00-22:00
Friday 11:00-23:00
Saturday 11:00-23:00
Sunday 11:00-22:00

Made with menuweb.menu

