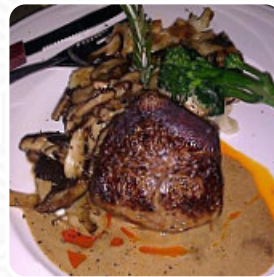




Kono's On The Green Menu

<https://menuweb.menu>

470 Lipoa Parkway, Kihei I-96753, United States, Kīhei
+18086334220



Here you can find the [menu](#) of Kono's On The Green in Kīhei. At the moment, there are 17 meals and drinks on the card.

Kono's On The Green Menu



Soups

FISH SOUP

Seafood

CALAMARI

From The Grill

RIBS

Chicken Wings

WINGS

Restaurant Category

BAR

Mexican Dishes

BREAKFAST BURRITO

BURRITO

These Types Of Dishes Are Being Served

BURGER

PANINI

PASTA

SALAD

Ingredients Used

SCALLOPS

BEEF

SHRIMP

TUNA

SALMON

SEAFOOD

Kono's On The Green

470 Lipoa Parkway, Kihei I-
96753, United States, Kihei

Opening Hours:

Monday 08:00 -20:00
Tuesday 08:00 -20:00
Wednesday 08:00 -20:00
Thursday 08:00 -20:00
Friday 08:00 -20:00
Saturday 08:00 -20:00
Sunday 08:00 -20:00

Made with menuweb.menu

