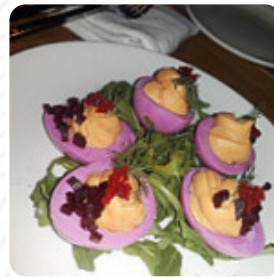




# Axle Brewing Co. Livernois Tap Menu

<https://menuweb.menu>

567 Livernois St, Ferndale, United States  
(+1)2482842422



A comprehensive [menu](#) of Axle Brewing Co. Livernois Tap from Ferndale covering all 17 courses and drinks can be found here on the card.

# Axle Brewing Co. Livernois Tap Menu



## Burger

PATTY MELT

## Side Dishes

CHEESE CURDS

## Starters & Salads

FRENCH FRIES

## American Food

MAC AND CHEESE

## Drinks

BEER

DRINKS

## Sauces

HOT SAUCE

AIOLI

## Ingredients Used



CHEESE

QUINOA

PICKLE

PORK MEAT

## These Types Of Dishes Are Being Served

APPETIZER

BURGER

CHICKEN

SALAD

LAMB

---

# Axle Brewing Co. Livernois Tap

567 Livernois St, Ferndale,  
United States

### Opening Hours:

Tuesday 16:00-22:00

Wednesday 16:00-22:00

Thursday 16:00-22:00

Friday 16:00-23:00

Saturday 12:00-23:00

Sunday 10:00-21:00

Made with [menuweb.menu](https://menuweb.menu)

