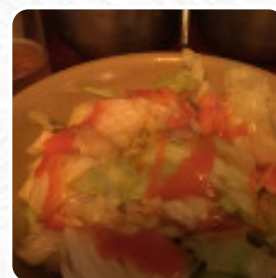
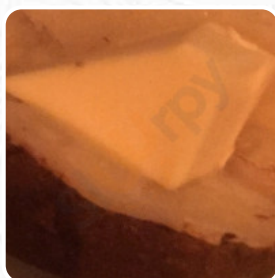




White Stag Inn Menu

<https://menuweb.menu>

7141 State Highway 17, Rhineland I-54501-9620, United States, RHINELANDER
(+1)7152721057



Here you can find the [menu](#) of **White Stag Inn** in RHINELANDER. At the moment, there are **16** menus and drinks on the menu.

White Stag Inn Menu



Entrées

POTATO WEDGES

Beef Dishes

FILET MIGNON

Restaurant Category

STEAKHOUSE

These Types Of Dishes Are Being Served

SALAD

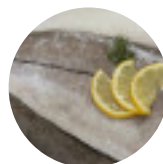
FISH

CHICKEN

PORK CHOPS

TUNA STEAK

Ingredients Used



HADDOCK

BEEF

SHRIMP

SEAFOOD

PORK MEAT

LETTUCE

ONION

MUSHROOMS

White Stag Inn

7141 State Highway 17,
Rhineland I-54501-9620,
United States, RHINELANDER

Opening Hours:

Monday 16:00 -21:30

Tuesday 16:00 -21:30 16:30
-21:30

Wednesday 16:30 -21:30

Thursday 16:30 -21:30

Friday 16:00 -21:30 16:30 -21:30

Saturday 16:00 -21:30 16:30
-21:30

Sunday 16:00 -21:30 16:30 -21:30

Made with menuweb.menu

