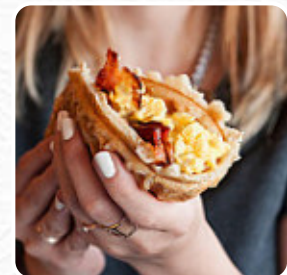




## Waffle House Menu

<https://menuweb.menu>

329 Seabreeze Boulevard, Daytona Beach, 32118, United States Of America  
+13866829659 - <https://locations.wafflehouse.com/daytonabeach-fl-2291>



**The Card** of Waffle House from Daytona Beach includes about 18 different meals and drinks. On average, you pay for a dish / drink about \$7.8. Waffle House experiences can vary widely, blending moments of stellar service with significant operational flaws. While some patrons rave about delightful meals and attentive staff, others recount lengthy waits, incorrect orders, and alarming staff behavior. Many highlight inconsistencies in food quality and pricing, while others enjoy perfectly cooked breakfasts and generous portions. Despite concerns over cleanliness and management, there are also glowing accounts of cleanliness and warmth from servers. Ultimately, diners face a hit-or-miss scenario that makes Waffle House a memorable, if chaotic, dining destination. Whether it's worth a visit may depend on personal expectations and patience.

# Waffle House Menu



## Drinks

DRINKS

## Dessert

WAFFLE

## Indian

SOFT DRINKS

\$2.9

## Beverages

ARNOLD PALMER

## Side Dishes

GRITS

CITY HAM

\$4.2

## Hot Drinks

TEA

HOT TEA

## Lunch & Dinner Specialties

CHEESESTEAK MELT  
HASHBROWN BOWL

\$10.9

CHICKEN MELT HASHBROWN  
BOWL

\$10.9

## Breakfast

BACON EGG CHEESE  
HASHBROWN BOWL

\$10.9

HAM EGG CHEESE HASHBROWN  
BOWL

\$10.9

SAUSAGE EGG CHEESE  
HASHBROWN BOWL

\$10.9

## Ingredients Used

SAUSAGE

\$4.2

CHEESE

CHEDDAR

EGG

BACON

\$4.2

# Waffle House

329 Seabreeze Boulevard,  
Daytona Beach, 32118, United  
States Of America

Opening Hours:

---

Made with [menuweb.menu](https://menuweb.menu)

