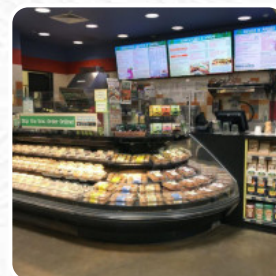
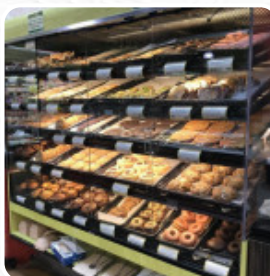
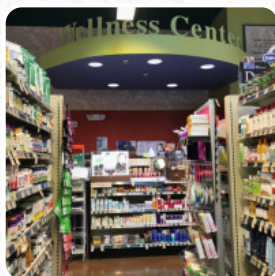
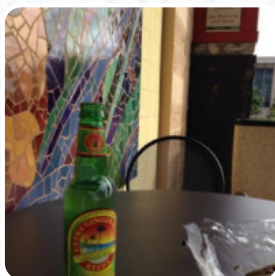


Down To Earth Menu

<https://menuweb.menu>

4460 Kapolei Pkwy Ste 320, Kapolei, Hawaii, USA, 96707, United States
+18086752300 - <http://www.downtoearth.org>



The restaurant from Kapolei offers **79** different **dishes and drinks** on [the menu](#) for an average price of \$8.9. Down To Earth Market serves as a delightful oasis for health-conscious and vegan diners seeking fresh, flavorful options. While the staff's familiarity with vegan products can be hit or miss, the diverse selection available—from hot table meals and vegan breakfast burritos to delectable bakery items—ensures something for everyone. The inviting atmosphere, friendly staff, and clean environment elevate the shopping and dining experience, despite slightly higher prices. Locally sourced goods and unique prepared items, like tofu musubi, make it a must-visit destination in Hawaii, leaving customers eager to return for more culinary adventures.

Down To Earth Menu



Smoothies

SMOOTHIE

Entrées

SUPPLI

Main Courses

LASAGNA

Breakfast

GRANOLA

Side Dishes

RICE

Starters & Salads

POTATO CHIPS

Burritos

FRESH MEX BURRITO \$9.0

Appetizer

POKE BOWL

Fish

SEA BASS

Smoothie Bowls

WARRIOR BOWL \$9.0

Soft Drinks

JUICE

Wraps & Sandwiches

EARTH BURGER \$9.0

Toppings

TOPPINGS

Milkshakes

MILK SHAKES

Beverages

JUICES

Hot Drinks

COFFEE

Popular Items

FOCCACIA PANINI \$9.0

Italian Specialties

FOCACCIA

Condiments And Sauces

HUMMUS

Sides

SWEET POTATO

Dte Signature Burgers

BLACK BEAN AND ROASTED BEETS BURGER \$9.0

All In A Cup

PITAYA BOWL \$8.0

Down To Earth Menu



Salads

POTATO SALAD

TOFU SALAD

Pizza

PIZZA HAWAII

VEGGIE PIZZA

Sandwiches

THE REUBEN \$9.0

GRILLED CHEESE

Drinks

SMOOTHIES

DRINKS

Coffee

MOCHA

LATTE

Dessert

DONUTS

BANANA BREAD

COOKIE

Mexican Dishes

BREAKFAST BURRITO

BURRITO

QUESADILLA \$9.0

Restaurant Category

GLUTEN FREE

MEXICAN

MEDITERRANEAN

TROPICAL

BAR

DESSERT

VEGETARIAN

VEGAN

These Types Of Dishes Are Being Served

WRAP

FISH

PANINI

MEAT

CHICKEN

SOUP

TURKEY

BREAD

ICE CREAM

DESSERTS

BURGER

PIZZA

SALAD

QUESADILLAS

Ingredients Used

FRUIT

VEGETABLES

CHILI

PORK MEAT

POTATOES

TOFU

TOMATOES

Down To Earth Menu



MUSTARD

CHEDDAR CHEESE

BANANA

HAM

PAPRIKA

PEPPERMINT

CHOCOLATE

OLIVES

CHEDDAR

MILK

SALAMI

CHEESE

Down To Earth

4460 Kapolei Pkwy Ste 320,
Kapolei, Hawaii, USA, 96707,
United States

Opening Hours:

Monday 07:00-21:00
Tuesday 07:00-21:00
Thursday 07:00-21:00
Friday 07:00-21:00
Saturday 07:00-21:00
Sunday 07:00-21:00

Made with [Menu](#)

