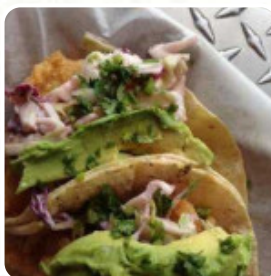
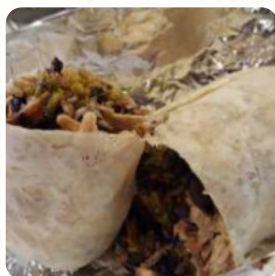
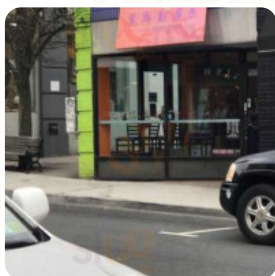




Salsa Salsa A Burrito Menu

<https://menuweb.menu>

142 Main St, Port Jefferson I-11777, United States, PORT JEFFERSON
(+1)6314739700



Here you can find the [menu](#) of Salsa Salsa A Burrito in PORT JEFFERSON. At the moment, there are 18 courses and drinks on the card.

Salsa Salsa A Burrito Menu



Salads

SPINACH SALAD

Starters & Salads

POTATO CHIPS

Sauces

SALSA

Restaurant Category

MEXICAN

Mexican Dishes

BURRITO

TACOS

FISH TACOS

Ingredients Used

SHRIMP

CHEESE

CHILI

EGG

SPINACH

These Types Of Dishes Are Being Served

SALAD

TUNA STEAK

SOUP

CHICKEN

WRAP

FISH

Salsa Salsa A Burrito

142 Main St, Port Jefferson I-
11777, United States, PORT
JEFFERSON

Opening Hours:

Monday 11:00 -20:00
Tuesday 11:00 -20:00
Wednesday 11:00 -20:00
Thursday 11:00 -20:00
Friday 11:00 -20:00
Saturday 11:00 -20:00
Sunday 11:00 -20:00

Made with menuweb.menu

