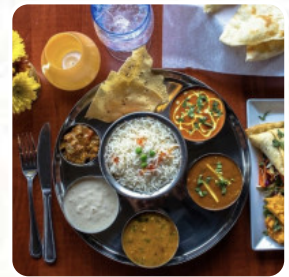
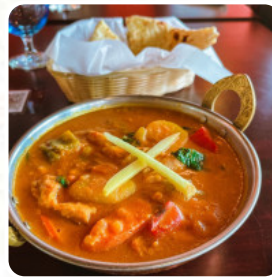




## ***Himchuli Highlands Indian Nepali Cuisine Menu***

<https://menuweb.menu>

3489 West 32nd Avenue, Denver, 80211, United States Of America, Meridian Station  
+13037289957 - <https://himchulidenver.com/>



A complete [menu](#) of Himchuli Highlands Indian Nepali Cuisine from Meridian Station covering all 17 menus and drinks can be found here on the food list.

# Himchuli Highlands Indian Nepali Cuisine



## Vegetarian Indian

ALOO MATAR

## Restaurant Category

VEGETARIAN

## Ingredients Used

GARLIC

CHEESE

## These Types Of Dishes Are Being Served

LAMB

CHICKEN

## Indian



RAITA

CHICKEN TANDOORI

CHICKEN BIRYANI

BIRYANI

CHICKEN SAAG

SAAG

MATAR PANEER

ALOO GOBI

GARLIC NAAN

NAAN

KORMA

---

# Himchuli Highlands Indian Nepali Cuisine

3489 West 32nd Avenue, Denver,  
80211, United States Of America,  
Meridian Station

### Opening Hours:

Monday 11:00 -21:30  
Tuesday 11:00 -21:30  
Wednesday 11:00 -21:30  
Thursday 11:00 -21:30  
Friday 11:00 -21:30  
Saturday 11:00 -21:30  
Sunday 11:00 -21:00

Made with [menuweb.menu](https://www.menuweb.menu)

 gallery image

