

and pay online, or with cash  
have your hot subs ready  
when you get here.



pick up your boxed and bagged orders  
at our Rapid Rescue To Go® station

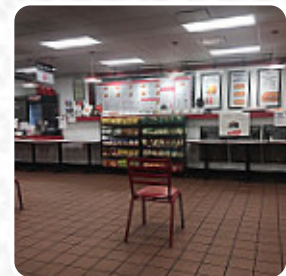


## ***Firehouse Subs Menu***

<https://menuweb.menu>

4595 Chestnut Park Plaza, St. Louis, United States

+13142003200 - <http://order.firehousesubs.com/menu?service-mode=TAKEOUT&store-number=1015>



The *menu of Firehouse Subs* from St. Louis includes **18** dishes. On average, **dishes or drinks on the menu** cost about \$12.9. The categories can be viewed on the menu below. Firehouse Subs has garnered a reputation for its mouthwatering sandwiches, especially the smokehouse beef brisket, praised for its rich BBQ flavor. However, customer service experiences vary widely; delays and unprofessional behavior from staff have led to frustration among delivery drivers and dine-in patrons alike. While many appreciate the delicious food and convenient meals, issues with order accuracy and menu limitations on delivery apps impede customer satisfaction. Despite these challenges, some guests commend the staff's efforts during busy times, highlighting that if you get the order right, the meal can be worth the wait.

# Firehouse Subs Menu



## Salad

HAM SALAD \$14.5

## Drinks

DRINKS

## Beef Dishes

BRISKET

## Mexican Dishes

CHILLI SAUCE

## Hot Specialty Subs

FIREHOUSE MEATBALL \$6.3

## Popular Items

SMOKED TURKEY BREAST \$6.3

## Group Platters

HALF STANDARD SUB SALAD \$41.3

## Build Your Own Sub

HONEY HAM \$6.3

## Sandwiches

PASTRAMI SANDWICH

CLUB SANDWICH

## These Types Of Dishes Are Being Served

PANINI

BREAD

## Salads



SALAD-FIREHOUSE SALAD, PLAIN \$7.9

TURKEY SALAD \$14.5

TUNA SALAD \$6.3

## Ingredients Used

BEEF

BEEF BRISKET

CORNED BEEF

# Firehouse Subs

4595 Chestnut Park Plaza, St. Louis, United States

## Opening Hours:

Monday 10:30-21:00  
Tuesday 10:30-21:00  
Wednesday 10:30-21:00  
Thursday 10:30-21:00  
Friday 10:30-21:00  
Saturday 10:30-21:00  
Sunday 10:30-21:00

Made with [menuweb.menu](https://menuweb.menu)

