

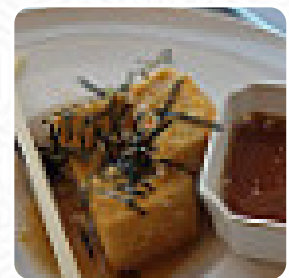
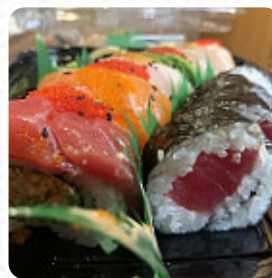


Domo Sushi Gig Harbor Menu

<https://menuweb.menu>

4901 Point Fosdick Dr NW, Gig Harbor, United States

+12538510592



Here you can find the [menu](#) of **Domo Sushi Gig Harbor** in Gig Harbor. At the moment, there are **19** courses and drinks on the menu.

Domo Sushi Gig Harbor Menu



Sushi Rolls

SUSHI

Sushi

SASHIMI

Appetizer

TEMPURA

Dessert

FRIED ICE CREAM

Steaks

RIBEYE STEAK

Fried Rice

FRIED RICE

Main Courses - Teriyaki

BEEF TERIYAKI

Japanese Specialties

CHICKEN TERIYAKI

MISO SOUP

Ingredients Used



SALMON

MISO

BEEF

TUNA

SOFT SHELL CRAB

These Types Of Dishes Are Being Served

ICE CREAM

SOUP

SALAD

APPETIZER

FISH

Domo Sushi Gig Harbor

4901 Point Fosdick Dr NW, Gig Harbor, United States

Opening Hours:

Monday 11:00 -22:00
Tuesday 11:00 -22:00
Wednesday 11:00 -22:00
Thursday 11:00 -22:00
Friday 11:00 -22:00
Saturday 11:00 -22:00
Sunday 16:00 -21:00

Made with menuweb.menu

