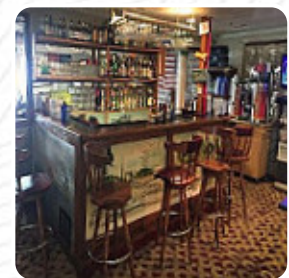
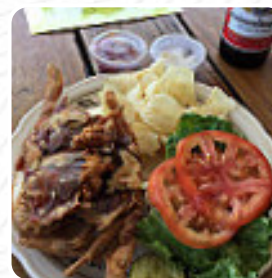




Fairport Marina Menu

<https://menuweb.menu>

252 Polly Cove Rd, 22539, Reedville, US, United States
(+1)8044535002



A complete [menu](#) of Fairport Marina from [Reedville](#) covering all 19 courses and drinks can be found here on the food list.

Fairport Marina Menu



Salads

CHICKEN SALAD

Entrées

CRAB CAKE

Starters & Salads

FRENCH FRIES

Sauces

MAYO

Main

PULLED PORK

Sandwiches

PULLED PORK SANDWICH

TUNA SANDWICH

CRAB CAKE SANDWICH

Ingredients Used

PORK MEAT

TUNA

CHEESE

LETTUCE

These Types Of Dishes Are Being Served



APPETIZER

PANINI

TUNA STEAK

SALAD

FISH

SANDWICH

CHICKEN

Fairport Marina

252 Polly Cove Rd, 22539,
Reedville, US, United States

Opening Hours:

Monday 09:00 -17:00

Tuesday 09:00 -17:00

Wednesday 09:00 -22:00

Thursday 09:00 -22:00

Friday 09:00 -22:00

Saturday 09:00 -17:00

Sunday 09:00 -17:00

Made with menuweb.menu

