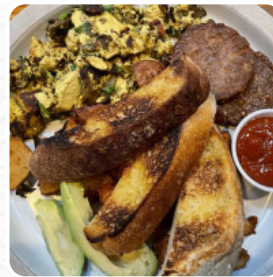
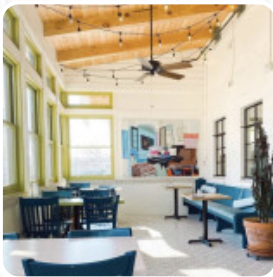




Arsaga's Mill District Menu

<https://menuweb.menu>

481 S School Ave, Fayetteville, Arkansas, USA, 72701, United States
+14792876749,+14794359401 - <https://arsagasmilldistrict.com>



A complete [menu](#) of Arsaga's Mill District from Fayetteville covering all 17 courses and drinks can be found here on the card.

The Coffee Hall And Creamery Menu



Sandwiches

BREAKFAST SANDWICH

Dessert

MUFFINS

Hot Drinks

COFFEE

Bread

BAGEL

Coffee

MOCHA

Smoothies

SMOOTHIE

STRAWBERRY BANANA SMOOTHIE

Drinks

DRINKS

COLD BREW

These Types Of Dishes
Are Being Served

ICE CREAM

PANINI

Ingredients Used

BEANS

CHEESE

CHOCOLATE

EGG

HAM

BANANA

The Coffee Hall And Creamery

124 N Main St, Marysville I-
43040, United States

Opening Hours:

Monday 07:00 -20:00

Tuesday 07:00 -20:00

Wednesday 07:00 -20:00

Thursday 07:00 -20:00

Friday 07:00 -20:00

Saturday 07:00 -18:00

Sunday 08:00 -14:00

Made with menuweb.menu

