



# Tokyo Japanese Menu

<https://menuweb.menu>

South Memorial Drive, Greenville, 27834, United States Of America  
**+12522159038**

www.tokyoexpresslunch.com

We open Monday - Friday  
 8:00 am - 4:00 pm

<b>San Francisco Location</b>	<b>Santa Location</b>
666 Sacramento Street (Between Mission & Montgomery) San Francisco, CA 94111	146 Spear Street (Between Mission & Montgomery) San Francisco, CA 94109
Tel: (415) 356-3240	Tel: (415) 249-1732
Fax: (415) 984-2942	Fax: (415) 348-1732

DIFFERENCE	
Acid	\$1.00
Spicy Mayo	\$1.20
Julien	\$1.20
Steamed	\$1.50
Chicken Teriyaki	\$2.75
Plate Special	\$2.75
Chicken Bowl	\$2.30
Spicy Beef Bowl	\$2.75
Quick Rice Bowl	\$1.10
Quick Salad	\$1.10
Quick Drink	\$1.50
Quick Plate	\$1.50
Quick Side	\$1.50

Sushi	\$6.99
Chicken Plate	\$6.99
Chicken Bowl	\$6.99
Chicken Teriyaki	\$6.99
Chicken Teriyaki Bowl	\$6.99
Chicken Teriyaki Plate	\$6.99

### TEMPURA

Bread with Soup, Salad and Rice

Spicy	\$1.99
Plate w/ Vegetable	\$1.99
Vegetable	\$1.99
Quick (Soup, Salad, Rice)	\$1.99
Quick Teriyaki	\$1.99

### UDON (Pasta Noodle)

Served with Salad

Spicy	\$1.99
Chicken	\$1.99
Chicken Bowl	\$1.99
Vegetable	\$1.99
Quick Teriyaki	\$1.99
Quick Bowl	\$1.99

### DONBURI (Over Rice)

Served with Soup and Tofu

Chicken	\$5.99
---------	--------

TSUKA (Rice) \$5.99	\$5.99
TSUKA (Rice) \$5.99	\$5.99
TSUKA (Rice) \$5.99	\$5.99
TSUKA (Rice) \$5.99	\$5.99
TSUKA (Rice) \$5.99	\$5.99

### SASHIMI

Served with Soup, Salad, Rice

MAKURO (Plate)	\$4.99
MAKURO (Bowl)	\$4.99
MAKURO (Bowl)	\$4.99
MAKURO (Bowl)	\$4.99
MAKURO (Bowl)	\$4.99

### SIDE ORDERS

CHIFFONIA (Ice Cream)	\$2.50
CHIFFONIA (Ice Cream)	\$2.50
CHIFFONIA (Ice Cream)	\$2.50
CHIFFONIA (Ice Cream)	\$2.50

CHICKEN (Plate)	\$6.99
CHICKEN (Bowl)	\$6.99
CHICKEN (Bowl)	\$6.99
CHICKEN (Bowl)	\$6.99
CHICKEN (Bowl)	\$6.99

The menu of Tokyo Japanese from Greenville includes 18 meals. On average, meals or drinks on [the card](#) cost about \$3.8. The categories can be viewed on the menu below.

# Tokyo Japanese Menu



## Entrées

TAKOYAKI

## Sushi Rolls

SUSHI

## Appetizer

TEMPURA

## Dessert

CAKE OF THE MONTH \$4.2

## Maki Sushi

DYNAMITE ROLL \$5.4

## Signature Rolls

JUNK IN THE TRUNK ROLL \$6.0

## Fried Rice

FRIED RICE \$2.4

## Bakery

VANILLA ROLL \$3.6

## These Types Of Dishes Are Being Served

SOUP

## Tempura Wings

TEMPURA WINGS \$5.5

## Lunch Offer - Vegetarian Dishes

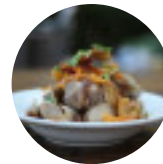
MIX VEGETABLE \$3.0

## Salads

SEAWEED SALAD \$3.6

HOUSE SALAD \$2.4

## Ingredients Used



SEAFOOD

EDAMAME \$2.4

CREAM CHEESE

CHEESE

AVOCADO

# Tokyo Japanese

South Memorial Drive, Greenville,  
27834, United States Of America

### Opening Hours:

Monday 11:00-21:30  
Tuesday 11:00-21:30  
Wednesday 11:00-21:30  
Thursday 11:00-21:30  
Friday 11:00-21:30  
Saturday 11:00-21:30  
Sunday 12:00-21:30

Made with [menuweb.menu](https://menuweb.menu)

